

**DKK1 Antibody (monoclonal) (M08)**

Mouse monoclonal antibody raised against a full length recombinant DKK1.

Catalog # AT1768a

**Specification**

---

**DKK1 Antibody (monoclonal) (M08) - Product Information**

Application	IP, WB, IHC
Primary Accession	<a href="#">O94907</a>
Other Accession	<a href="#">BC001539</a>
Reactivity	Human
Host	mouse
Clonality	Monoclonal
Isotype	IgG2b Kappa
Calculated MW	28672

**DKK1 Antibody (monoclonal) (M08) - Additional Information**

Gene ID 22943

**Other Names**

Dickkopf-related protein 1, Dickkopf-1, Dkk-1, hDkk-1, SK, DKK1

**Target/Specificity**

DKK1 (AAH01539.1, 1 a.a. ~ 266 a.a) full-length recombinant protein with GST tag. MW of the GST tag alone is 26 KDa.

**Dilution**

WB~~1:500~1000

**Format**

Clear, colorless solution in phosphate buffered saline, pH 7.2 .

**Storage**

Store at -20°C or lower. Aliquot to avoid repeated freezing and thawing.

**Precautions**

DKK1 Antibody (monoclonal) (M08) is for research use only and not for use in diagnostic or therapeutic procedures.

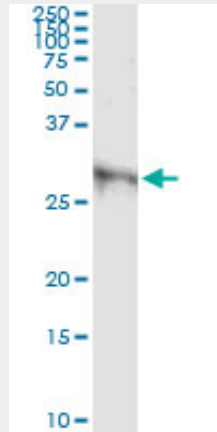
**DKK1 Antibody (monoclonal) (M08) - Protocols**

Provided below are standard protocols that you may find useful for product applications.

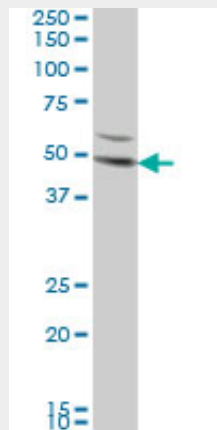
- [Western Blot](#)
- [Blocking Peptides](#)
- [Dot Blot](#)
- [Immunohistochemistry](#)

- [Immunofluorescence](#)
- [Immunoprecipitation](#)
- [Flow Cytometry](#)
- [Cell Culture](#)

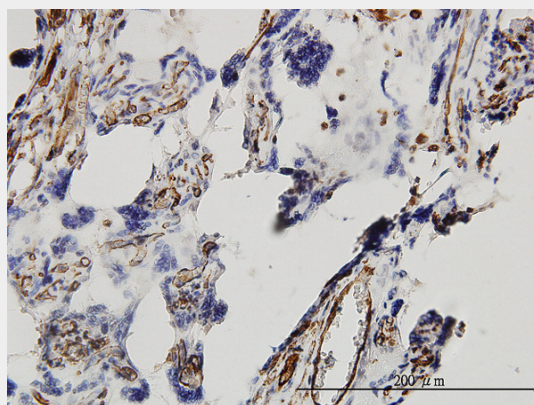
### DKK1 Antibody (monoclonal) (M08) - Images



Immunoprecipitation of DKK1 transfected lysate using anti-DKK1 monoclonal antibody and Protein A Magnetic Bead ([U0007](#)), and immunoblotted with DKK1 MaxPab rabbit polyclonal antibody.



DKK1 monoclonal antibody (M08), clone 2B12 Western Blot analysis of DKK1 expression in HeLa (Cat # L013V1 ).



Immunoperoxidase of monoclonal antibody to DKK1 on formalin-fixed paraffin-embedded human

placenta. [antibody concentration 3 ug/ml]

### **DKK1 Antibody (monoclonal) (M08) - Background**

This gene encodes a protein that is a member of the dickkopf family. It is a secreted protein with two cysteine rich regions and is involved in embryonic development through its inhibition of the WNT signaling pathway. Elevated levels of DKK1 in bone marrow plasma and peripheral blood is associated with the presence of osteolytic bone lesions in patients with multiple myeloma.

### **DKK1 Antibody (monoclonal) (M08) - References**

1.High dickkopf-1 levels in sera and leukocytes from children with 21-hydroxylase deficiency on chronic glucocorticoid treatment. Brunetti G, Faienza MF, Piacente L, Ventura A, Oranger A, Carbone C, Benedetto AD, Colaianni G, Gigante M, Mori G, Gesualdo L, Colucci S, Cavallo L, Grano MAM J Physiol Endocrinol Metab. 2013 Mar;304(5):E546-54. doi: 10.1152/ajpendo.00535.2012. Epub 2013 Jan 8.