

CXCL12 Antibody (monoclonal) (M07)

Mouse monoclonal antibody raised against a full length recombinant CXCL12.

Catalog # AT1691a

Specification

CXCL12 Antibody (monoclonal) (M07) - Product Information

Application	E
Primary Accession	P48061
Other Accession	BC039893
Reactivity	Human
Host	mouse
Clonality	Monoclonal
Isotype	IgG2a Kappa
Calculated MW	10666

CXCL12 Antibody (monoclonal) (M07) - Additional Information

Gene ID 6387

Other Names

Stromal cell-derived factor 1, SDF-1, hSDF-1, C-X-C motif chemokine 12, Intercrine reduced in hepatomas, IRH, hIRH, Pre-B cell growth-stimulating factor, PBSF, SDF-1-beta(3-72), SDF-1-alpha(3-67), CXCL12, SDF1, SDF1A, SDF1B

Target/Specificity

CXCL12 (AAH39893.1, 1 a.a. ~ 89 a.a) full-length recombinant protein with GST tag. MW of the GST tag alone is 26 KDa.

Format

Clear, colorless solution in phosphate buffered saline, pH 7.2 .

Storage

Store at -20°C or lower. Aliquot to avoid repeated freezing and thawing.

Precautions

CXCL12 Antibody (monoclonal) (M07) is for research use only and not for use in diagnostic or therapeutic procedures.

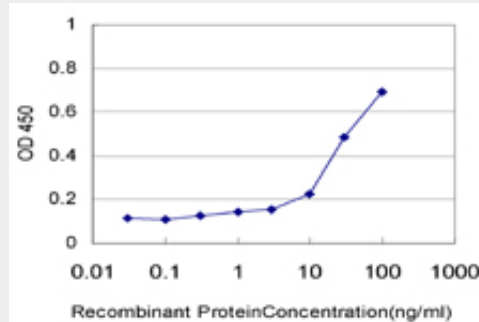
CXCL12 Antibody (monoclonal) (M07) - Protocols

Provided below are standard protocols that you may find useful for product applications.

- [Western Blot](#)
- [Blocking Peptides](#)
- [Dot Blot](#)
- [Immunohistochemistry](#)
- [Immunofluorescence](#)

- [Immunoprecipitation](#)
- [Flow Cytometry](#)
- [Cell Culture](#)

CXCL12 Antibody (monoclonal) (M07) - Images



Detection limit for recombinant GST tagged CXCL12 is approximately 10ng/ml as a capture antibody.

CXCL12 Antibody (monoclonal) (M07) - Background

This gene encodes a stromal cell-derived alpha chemokine member of the intercrine family. This gene product and its receptor CXCR4 can activate lymphocytes and have been implicated in the metastasis of some cancers such as breast cancer. Mutations in this gene are associated with resistance to human immunodeficiency virus type 1 infections. Multiple transcript variants encoding different isoforms have been found for this gene.

CXCL12 Antibody (monoclonal) (M07) - References

CCL3 genotype and current depression increase risk of HIV-associated dementia. Levine AJ, et al. Neurobehav HIV Med, 2009 Nov. PMID 20725607. CXCL12/SDF-1 alpha activates NF-kappaB and promotes oral cancer invasion through the Carma3/Bcl10/Malt1 complex. Rehman AO, et al. Int J Oral Sci, 2009 Sep. PMID 20695076. Common genetic polymorphisms in Moyamoya and atherosclerotic disease in Europeans. Roder C, et al. Childs Nerv Syst, 2010 Aug 6. PMID 20694560. Decreased interstitial FOXP3(+) lymphocytes in usual interstitial pneumonia with discrepancy of CXCL12/CXCR4 axis. Shimizu Y, et al. Int J Immunopathol Pharmacol, 2010 Apr-Jun. PMID 20646340. Variation at the NFATC2 Locus Increases the Risk of Thiazolidinedione-Induced Edema in the Diabetes REduction Assessment with ramipril and rosiglitazone Medication (DREAM) Study. Bailey SD, et al. Diabetes Care, 2010 Jul 13. PMID 20628086.