

CUTL1 Antibody (monoclonal) (M02)

Mouse monoclonal antibody raised against a partial recombinant CUTL1.

Catalog # AT1685a

Specification

CUTL1 Antibody (monoclonal) (M02) - Product Information

Application	WB, E
Primary Accession	O13948
Other Accession	NM_001913
Reactivity	Human
Host	mouse
Clonality	Monoclonal
Isotype	IgG1 Kappa
Calculated MW	77455

CUTL1 Antibody (monoclonal) (M02) - Additional Information

Gene ID 1523

Other Names

Protein CASP, CUX1, CUTL1

Target/Specificity

CUTL1 (NP_001904.2, 521 a.a. ~ 620 a.a) partial recombinant protein with GST tag. MW of the GST tag alone is 26 KDa.

Dilution

WB ~ ~ 1:500 ~ 1000

Format

Clear, colorless solution in phosphate buffered saline, pH 7.2 .

Storage

Store at -20°C or lower. Aliquot to avoid repeated freezing and thawing.

Precautions

CUTL1 Antibody (monoclonal) (M02) is for research use only and not for use in diagnostic or therapeutic procedures.

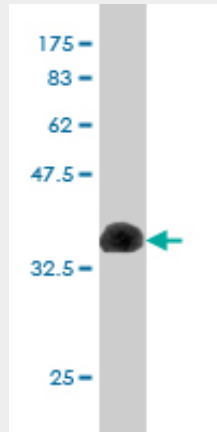
CUTL1 Antibody (monoclonal) (M02) - Protocols

Provided below are standard protocols that you may find useful for product applications.

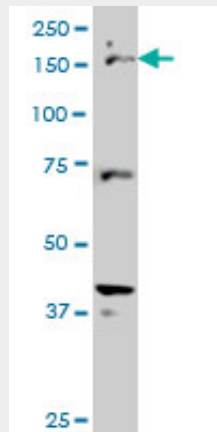
- [Western Blot](#)
- [Blocking Peptides](#)
- [Dot Blot](#)
- [Immunohistochemistry](#)

- [Immunofluorescence](#)
- [Immunoprecipitation](#)
- [Flow Cytometry](#)
- [Cell Culture](#)

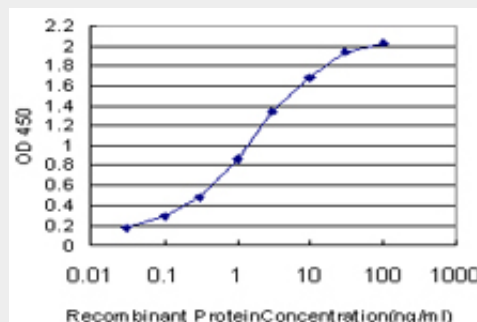
CUTL1 Antibody (monoclonal) (M02) - Images



Antibody Reactive Against Recombinant Protein. Western Blot detection against Immunogen (36.63 KDa) .



CUTL1 monoclonal antibody (M02), clone 2D10 Western Blot analysis of CUTL1 expression in HeLa S3 NE ((Cat # AT1685a)



Detection limit for recombinant GST tagged CUTL1 is approximately 0.03ng/ml as a capture antibody.

CUTL1 Antibody (monoclonal) (M02) - Background

The protein encoded by this gene is a member of the homeodomain family of DNA binding proteins. It may regulate gene expression, morphogenesis, and differentiation and it may also play a role in the cell cycle progression. Several alternatively spliced transcript variants of this gene have been described, but the full-length nature of some of these variants has not been determined.

CUTL1 Antibody (monoclonal) (M02) - References

Personalized smoking cessation: interactions between nicotine dose, dependence and quit-success genotype score. Rose JE, et al. Mol Med, 2010 Jul-Aug. PMID 20379614. New genetic associations detected in a host response study to hepatitis B vaccine. Davila S, et al. Genes Immun, 2010 Apr. PMID 20237496. CDP/cut is an osteoblastic coactivator of the vitamin D receptor (VDR). Ochiai E, et al. J Bone Miner Res, 2010 May. PMID 19888899. p110 CUX1 homeodomain protein stimulates cell migration and invasion in part through a regulatory cascade culminating in the repression of E-cadherin and occludin. Kedinger V, et al. J Biol Chem, 2009 Oct 2. PMID 19635798. FGFR2 is associated with hair thickness in Asian populations. Fujimoto A, et al. J Hum Genet, 2009 Aug. PMID 19590514.