

CUTL1 Antibody (monoclonal) (M01)

Mouse monoclonal antibody raised against a partial recombinant CUTL1.

Catalog # AT1684a

Specification

CUTL1 Antibody (monoclonal) (M01) - Product Information

Application	IF, IP, WB, IHC, E
Primary Accession	O13948
Other Accession	NM_001913
Reactivity	Human
Host	mouse
Clonality	Monoclonal
Isotype	IgG1 kappa
Calculated MW	77455

CUTL1 Antibody (monoclonal) (M01) - Additional Information**Gene ID** 1523**Other Names**

Protein CASP, CUX1, CUTL1

Target/Specificity

CUTL1 (NP_001904.2, 521 a.a. ~ 620 a.a) partial recombinant protein with GST tag. MW of the GST tag alone is 26 KDa.

Dilution

WB ~ ~ 1:500 ~ 1000

Format

Clear, colorless solution in phosphate buffered saline, pH 7.2 .

Storage

Store at -20°C or lower. Aliquot to avoid repeated freezing and thawing.

Precautions

CUTL1 Antibody (monoclonal) (M01) is for research use only and not for use in diagnostic or therapeutic procedures.

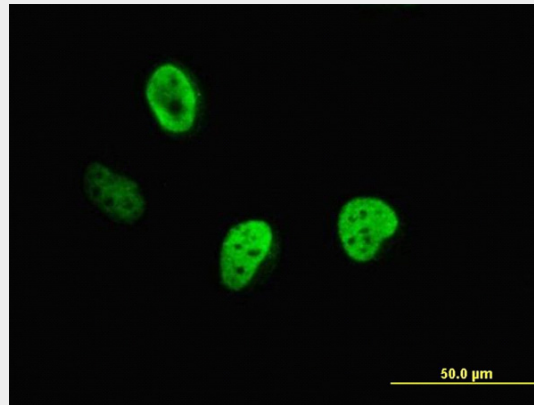
CUTL1 Antibody (monoclonal) (M01) - Protocols

Provided below are standard protocols that you may find useful for product applications.

- [Western Blot](#)
- [Blocking Peptides](#)
- [Dot Blot](#)
- [Immunohistochemistry](#)

- [Immunofluorescence](#)
- [Immunoprecipitation](#)
- [Flow Cytometry](#)
- [Cell Culture](#)

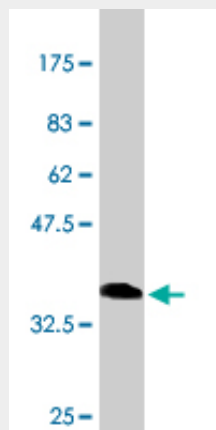
CUTL1 Antibody (monoclonal) (M01) - Images



Immunofluorescence of monoclonal antibody to CUTL1 on HeLa cell. [antibody concentration 10 ug/ml]

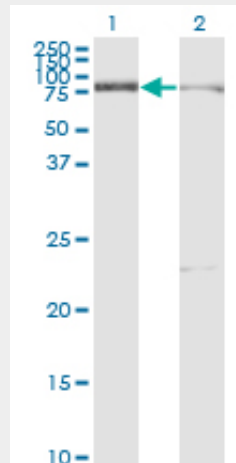


Immunoprecipitation of CUX1 transfected lysate using anti-CUX1 monoclonal antibody and Protein A Magnetic Bead ([U0007](#)), and immunoblotted with CUX1 MaxPab rabbit polyclonal antibody.



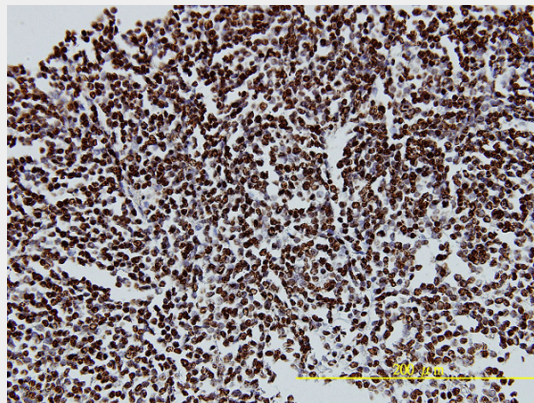
Antibody Reactive Against Recombinant Protein. Western Blot detection against Immunogen

(36.63 KDa) .

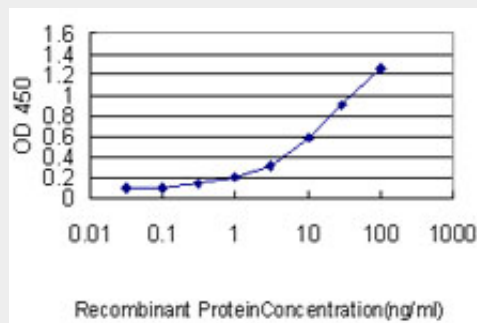


Western Blot analysis of CUX1 expression in transfected 293T cell line by CUTL1 monoclonal antibody (M01), clone 2A10.

Lane 1: CUX1 transfected lysate(77.2 KDa).
 Lane 2: Non-transfected lysate.



Immunoperoxidase of monoclonal antibody to CUTL1 on formalin-fixed paraffin-embedded human malignant lymphoma, diffuse large B tissue. [antibody concentration 5 ug/ml]



Detection limit for recombinant GST tagged CUTL1 is approximately 0.03ng/ml as a capture antibody.

CUTL1 Antibody (monoclonal) (M01) - Background

The protein encoded by this gene is a member of the homeodomain family of DNA binding proteins. It may regulate gene expression, morphogenesis, and differentiation and it may also play

a role in the cell cycle progression. Several alternatively spliced transcript variants of this gene have been described, but the full-length nature of some of these variants has not been determined.

CUTL1 Antibody (monoclonal) (M01) - References

1. Neocortical Layer Formation of Human Developing Brains and Lissencephalies: Consideration of Layer-Specific Marker Expression. Saito T, Hanai S, Takashima S, Nakagawa E, Okazaki S, Inoue T, Miyata R, Hoshino K, Akashi T, Sasaki M, Goto YI, Hayashi M, Itoh M. *Cereb Cortex*. 2010 Jul 12. [Epub ahead of print]