

**CTAG2 Antibody (monoclonal) (M04)**

Mouse monoclonal antibody raised against a partial recombinant CTAG2.

Catalog # AT1664a

**Specification**

---

**CTAG2 Antibody (monoclonal) (M04) - Product Information**

Application	WB, E
Primary Accession	<a href="#">O75638</a>
Other Accession	<a href="#">NM_020994</a>
Reactivity	Human
Host	Mouse
Clonality	Monoclonal
Isotype	IgG2b Kappa
Calculated MW	21090

**CTAG2 Antibody (monoclonal) (M04) - Additional Information**

Gene ID 30848

**Other Names**

Cancer/testis antigen 2, CT2, Autoimmunogenic cancer/testis antigen NY-ESO-2, Cancer/testis antigen 62, CT62, L antigen family member 1, LAGE-1, CTAG2, ESO2, LAGE1

**Target/Specificity**

CTAG2 (NP\_066274, 111 a.a. ~ 210 a.a) partial recombinant protein with GST tag. MW of the GST tag alone is 26 KDa.

**Dilution**

WB~~1:500~1000

**Format**

Clear, colorless solution in phosphate buffered saline, pH 7.2 .

**Storage**

Store at -20°C or lower. Aliquot to avoid repeated freezing and thawing.

**Precautions**

CTAG2 Antibody (monoclonal) (M04) is for research use only and not for use in diagnostic or therapeutic procedures.

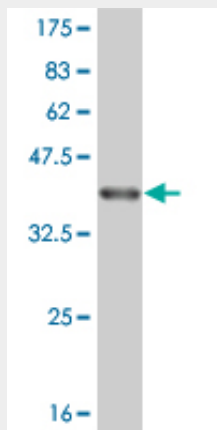
**CTAG2 Antibody (monoclonal) (M04) - Protocols**

Provided below are standard protocols that you may find useful for product applications.

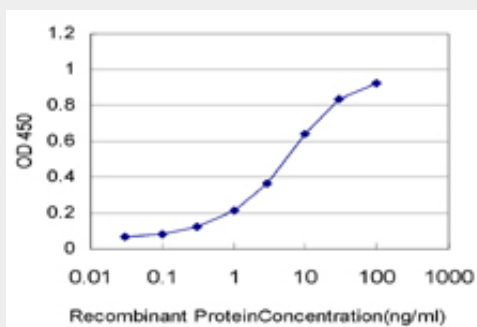
- [Western Blot](#)
- [Blocking Peptides](#)
- [Dot Blot](#)

- [Immunohistochemistry](#)
- [Immunofluorescence](#)
- [Immunoprecipitation](#)
- [Flow Cytometry](#)
- [Cell Culture](#)

### CTAG2 Antibody (monoclonal) (M04) - Images



Antibody Reactive Against Recombinant Protein. Western Blot detection against Immunogen (37.11 kDa) .



Detection limit for recombinant GST tagged CTAG2 is approximately 0.1ng/ml as a capture antibody.

### CTAG2 Antibody (monoclonal) (M04) - Background

This gene encodes an autoimmunogenic tumor antigen that belongs to the ESO/LAGE family of cancer-testis antigens. This protein is expressed in a wide array of cancers including melanoma, breast cancer, bladder cancer and prostate cancer. This protein is also expressed in normal testis tissue. An alternative open reading frame product of this gene has been described in PMID 10399963. This alternate protein, termed CAMEL, is a tumor antigen that is recognized by melanoma-specific cytotoxic T-lymphocytes. Alternate splicing results in multiple transcript variants.

### CTAG2 Antibody (monoclonal) (M04) - References

Comparisons for detecting NY-ESO-1 mRNA expression levels in hepatocellular carcinoma tissues. Wang XY, et al. *Oncol Rep*, 2009 Mar. PMID 19212631. Prognostic impact of cancer/testis antigen expression in advanced stage multiple myeloma patients. Andrade VC, et al. *Cancer Immun*, 2008 Feb 1. PMID 18237105. Identification and expression analysis of novel LAGE-1 alleles with single nucleotide polymorphisms in cancer patients. Shao Y, et al. *J Cancer Res Clin Oncol*, 2008 Apr. PMID 17899192. A new specific gene expression in squamous cell carcinoma of the esophagus detected

using representational difference analysis and cDNA microarray. Kan T, et al. *Oncology*, 2006. PMID 16446548. The LIFEdb database in 2006. Mehrle A, et al. *Nucleic Acids Res*, 2006 Jan 1. PMID 16381901.