

## **CSTB Antibody (monoclonal) (M02)**

Mouse monoclonal antibody raised against a full length recombinant CSTB.

Catalog # AT1662a

### **Specification**

---

#### **CSTB Antibody (monoclonal) (M02) - Product Information**

Application	IF, WB, IHC
Primary Accession	<a href="#">P04080</a>
Other Accession	<a href="#">BC003370.1</a>
Reactivity	Human
Host	mouse
Clonality	Monoclonal
Isotype	IgG1 kappa
Calculated MW	11140

#### **CSTB Antibody (monoclonal) (M02) - Additional Information**

**Gene ID** 1476

#### **Other Names**

Cystatin-B, CPI-B, Liver thiol proteinase inhibitor, Stefin-B, CSTB, CST6, STFB

#### **Target/Specificity**

CSTB (AAH03370.1, 1 a.a. ~ 98 a.a) full-length recombinant protein with GST tag. MW of the GST tag alone is 26 KDa.

#### **Dilution**

WB~~1:500~1000

#### **Format**

Clear, colorless solution in phosphate buffered saline, pH 7.2 .

#### **Storage**

Store at -20°C or lower. Aliquot to avoid repeated freezing and thawing.

#### **Precautions**

CSTB Antibody (monoclonal) (M02) is for research use only and not for use in diagnostic or therapeutic procedures.

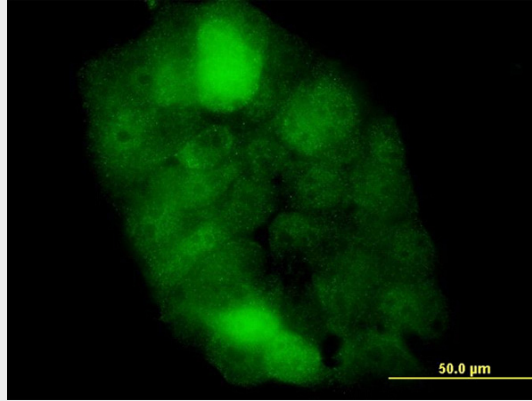
#### **CSTB Antibody (monoclonal) (M02) - Protocols**

Provided below are standard protocols that you may find useful for product applications.

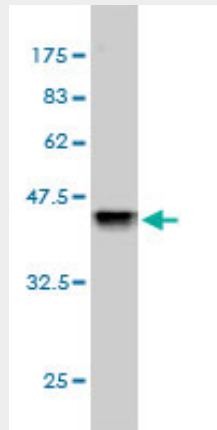
- [Western Blot](#)
- [Blocking Peptides](#)
- [Dot Blot](#)
- [Immunohistochemistry](#)

- [Immunofluorescence](#)
- [Immunoprecipitation](#)
- [Flow Cytometry](#)
- [Cell Culture](#)

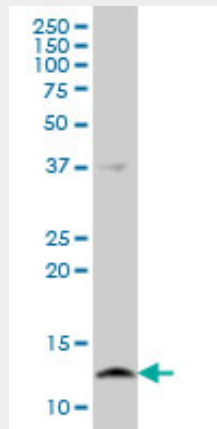
### CSTB Antibody (monoclonal) (M02) - Images



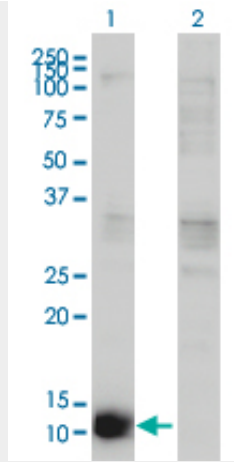
Immunofluorescence of monoclonal antibody to CSTB on A-431 cell. [antibody concentration 10 ug/ml]



Antibody Reactive Against Recombinant Protein. Western Blot detection against Immunogen (36.52 KDa) .

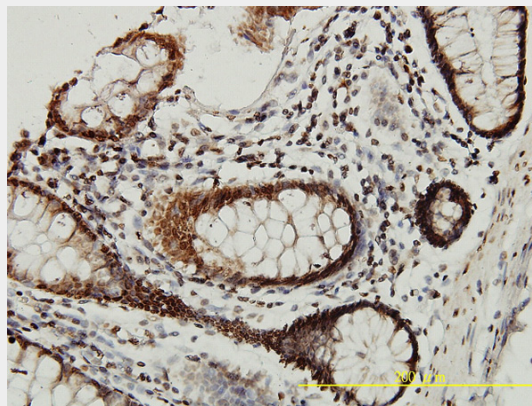


CSTB monoclonal antibody (M02), clone M2-F1 Western Blot analysis of CSTB expression in A-431 ( (Cat # AT1662a )



Western Blot analysis of CSTB expression in transfected 293T cell line by CSTB monoclonal antibody (M02), clone M2-F1.

Lane 1: CSTB transfected lysate(11 KDa).  
Lane 2: Non-transfected lysate.



Immunoperoxidase of monoclonal antibody to CSTB on formalin-fixed paraffin-embedded human colon tissue. [antibody concentration 5 ug/ml]

### **CSTB Antibody (monoclonal) (M02) - Background**

The cystatin superfamily encompasses proteins that contain multiple cystatin-like sequences. Some of the members are active cysteine protease inhibitors, while others have lost or perhaps never acquired this inhibitory activity. There are three inhibitory families in the superfamily, including the type 1 cystatins (stefins), type 2 cystatins and kininogens. This gene encodes a stefin that functions as an intracellular thiol protease inhibitor. The protein is able to form a dimer stabilized by noncovalent forces, inhibiting papain and cathepsins I, h and b. The protein is thought to play a role in protecting against the proteases leaking from lysosomes. Evidence indicates that mutations in this gene are responsible for the primary defects in patients with progressive myoclonic epilepsy (EPM1).

### **CSTB Antibody (monoclonal) (M02) - References**

Variation at the NFATC2 Locus Increases the Risk of Thiazolinedione-Induced Edema in the Diabetes REduction Assessment with ramipril and rosiglitazone Medication (DREAM) Study. Bailey SD, et al. Diabetes Care, 2010 Jul 13. PMID 20628086. Intracellular aggregation of human stefin B: confocal and electron microscopy study. Ceru S, et al. Biol Cell, 2010 Mar 17. PMID 20078424. Stefin B interacts with histones and cathepsin L in the nucleus. Ceru S, et al. J Biol Chem, 2010 Mar 26.

PMID 20075068. Interaction between oligomers of stefin B and amyloid-beta in vitro and in cells. Skerget K, et al. J Biol Chem, 2010 Jan 29. PMID 19955183. Gene-centric association signals for lipids and apolipoproteins identified via the HumanCVD BeadChip. Talmud PJ, et al. Am J Hum Genet, 2009 Nov. PMID 19913121.