

## **CSRP1 Antibody (monoclonal) (M06)**

Mouse monoclonal antibody raised against a partial recombinant CSRP1.

Catalog # AT1658a

### **Specification**

---

#### **CSRP1 Antibody (monoclonal) (M06) - Product Information**

Application	IF, WB, E
Primary Accession	<a href="#">P21291</a>
Other Accession	<a href="#">NM_004078</a>
Reactivity	Human
Host	mouse
Clonality	Monoclonal
Isotype	IgG2a Kappa
Calculated MW	20567

#### **CSRP1 Antibody (monoclonal) (M06) - Additional Information**

**Gene ID** 1465

##### **Other Names**

Cysteine and glycine-rich protein 1, Cysteine-rich protein 1, CRP, CRP1, Epididymis luminal protein 141, HEL-141, CSRP1, CSR, CYRP

##### **Target/Specificity**

CSRP1 (NP\_004069, 94 a.a. ~ 192 a.a) partial recombinant protein with GST tag. MW of the GST tag alone is 26 KDa.

##### **Dilution**

WB~~1:500~1000

##### **Format**

Clear, colorless solution in phosphate buffered saline, pH 7.2 .

##### **Storage**

Store at -20°C or lower. Aliquot to avoid repeated freezing and thawing.

##### **Precautions**

CSRP1 Antibody (monoclonal) (M06) is for research use only and not for use in diagnostic or therapeutic procedures.

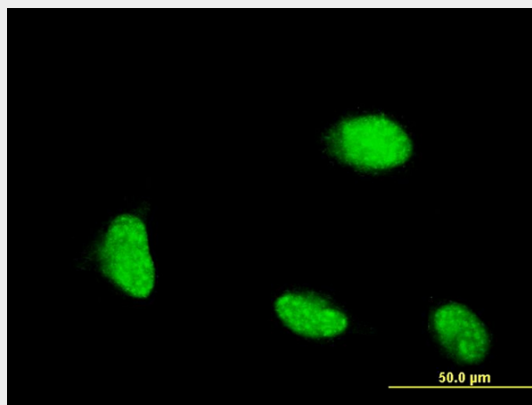
#### **CSRP1 Antibody (monoclonal) (M06) - Protocols**

Provided below are standard protocols that you may find useful for product applications.

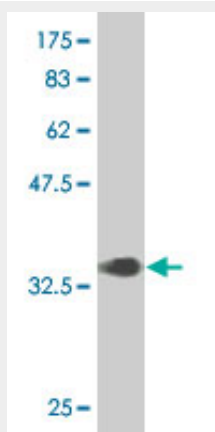
- [Western Blot](#)
- [Blocking Peptides](#)
- [Dot Blot](#)

- [Immunohistochemistry](#)
- [Immunofluorescence](#)
- [Immunoprecipitation](#)
- [Flow Cytometry](#)
- [Cell Culture](#)

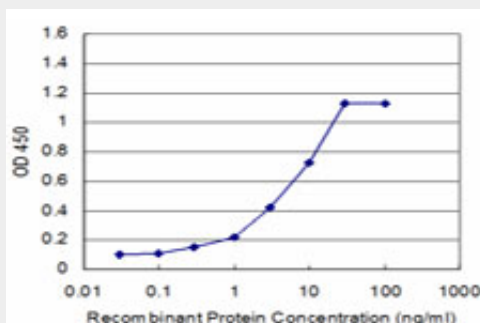
### CSRP1 Antibody (monoclonal) (M06) - Images



Immunofluorescence of monoclonal antibody to CSRP1 on HeLa cell . [antibody concentration 10 ug/ml]



Antibody Reactive Against Recombinant Protein. Western Blot detection against Immunogen (36.63 KDa) .



Detection limit for recombinant GST tagged CSRP1 is approximately 0.3ng/ml as a capture antibody.

### CSRP1 Antibody (monoclonal) (M06) - Background

This gene encodes a member of the cysteine-rich protein (CSRP) family. This gene family includes a group of LIM domain proteins, which may be involved in regulatory processes important for development and cellular differentiation. The LIM/double zinc-finger motif found in this gene product occurs in proteins with critical functions in gene regulation, cell growth, and somatic differentiation. Alternatively spliced transcript variants have been described.

### **CSRP1 Antibody (monoclonal) (M06) - References**

Ultraviolet B radiation regulates cysteine-rich protein 1 in human keratinocytes. Latonen L, et al. *Photodermatol Photoimmunol Photomed*, 2010 Apr. PMID 20415737. Personalized smoking cessation: interactions between nicotine dose, dependence and quit-success genotype score. Rose JE, et al. *Mol Med*, 2010 Jul-Aug. PMID 20379614. Hypomethylation of WNT5A, CRIP1 and S100P in prostate cancer. Wang Q, et al. *Oncogene*, 2007 Oct 4. PMID 17486081. Methylation status of genes upregulated by demethylating agent 5-aza-2'-deoxycytidine in hepatocellular carcinoma. Hirasawa Y, et al. *Oncology*, 2006. PMID 17341888. Global, in vivo, and site-specific phosphorylation dynamics in signaling networks. Olsen JV, et al. *Cell*, 2006 Nov 3. PMID 17081983.