

CSE1L Antibody (monoclonal) (M02)

Mouse monoclonal antibody raised against a partial recombinant CSE1L.

Catalog # AT1651a

Specification

CSE1L Antibody (monoclonal) (M02) - Product Information

Application	IF, WB, E
Primary Accession	P55060
Other Accession	NM_001316
Reactivity	Human
Host	mouse
Clonality	Monoclonal
Isotype	IgG1 kappa
Calculated MW	110417

CSE1L Antibody (monoclonal) (M02) - Additional Information

Gene ID 1434

Other Names

Exportin-2, Exp2, Cellular apoptosis susceptibility protein, Chromosome segregation 1-like protein, Importin-alpha re-exporter, CSE1L, CAS, XPO2

Target/Specificity

CSE1L (NP_001307, 872 a.a. ~ 971 a.a) partial recombinant protein with GST tag. MW of the GST tag alone is 26 KDa.

Dilution

WB~~1:500~1000

Format

Clear, colorless solution in phosphate buffered saline, pH 7.2 .

Storage

Store at -20°C or lower. Aliquot to avoid repeated freezing and thawing.

Precautions

CSE1L Antibody (monoclonal) (M02) is for research use only and not for use in diagnostic or therapeutic procedures.

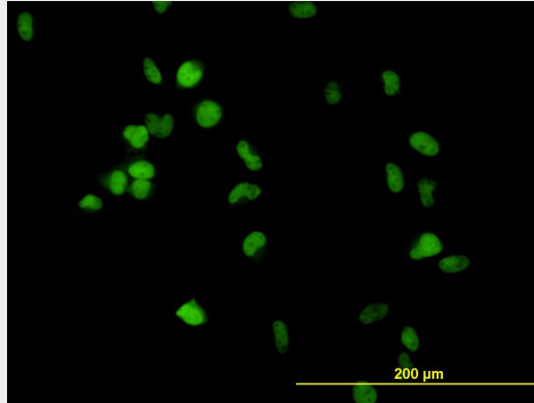
CSE1L Antibody (monoclonal) (M02) - Protocols

Provided below are standard protocols that you may find useful for product applications.

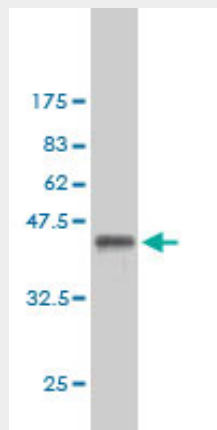
- [Western Blot](#)
- [Blocking Peptides](#)
- [Dot Blot](#)

- [Immunohistochemistry](#)
- [Immunofluorescence](#)
- [Immunoprecipitation](#)
- [Flow Cytometry](#)
- [Cell Culture](#)

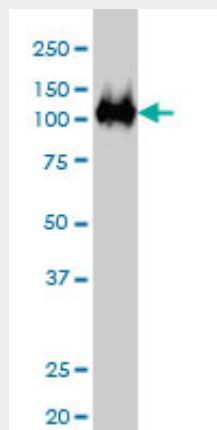
CSE1L Antibody (monoclonal) (M02) - Images



Immunofluorescence of monoclonal antibody to CSE1L on HeLa cell. [antibody concentration 10 ug/ml]

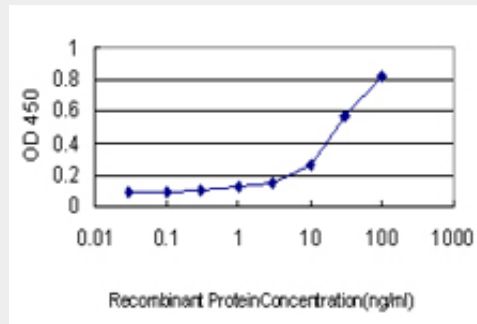


Antibody Reactive Against Recombinant Protein. Western Blot detection against Immunogen (36.74 KDa) .



CSE1L monoclonal antibody (M02), clone 1E4 Western Blot analysis of CSE1L expression in K-562

((Cat # AT1651a)



Detection limit for recombinant GST tagged CSE1L is approximately 0.3ng/ml as a capture antibody.

CSE1L Antibody (monoclonal) (M02) - Background

Proteins that carry a nuclear localization signal (NLS) are transported into the nucleus by the importin-alpha/beta heterodimer. Importin-alpha binds the NLS, while importin-beta mediates translocation through the nuclear pore complex. After translocation, RanGTP binds importin-beta and displaces importin-alpha. Importin-alpha must then be returned to the cytoplasm, leaving the NLS protein behind. The protein encoded by this gene binds strongly to NLS-free importin-alpha, and this binding is released in the cytoplasm by the combined action of RANBP1 and RANGAP1. In addition, the encoded protein may play a role both in apoptosis and in cell proliferation.

CSE1L Antibody (monoclonal) (M02) - References

Defining the human deubiquitinating enzyme interaction landscape. Sowa ME, et al. *Cell*, 2009 Jul 23. PMID 19615732. Function of CSE1L/CAS in the secretion of HT-29 human colorectal cells and its expression in human colon. Tsao TY, et al. *Mol Cell Biochem*, 2009 Jul. PMID 19224336. PHAPI, CAS, and Hsp70 promote apoptosome formation by preventing Apaf-1 aggregation and enhancing nucleotide exchange on Apaf-1. Kim HE, et al. *Mol Cell*, 2008 Apr 25. PMID 18439902. Dissection of the molecular mechanisms that control the nuclear accumulation of transport factors importin-alpha and CAS in stressed cells. Kodiha M, et al. *Cell Mol Life Sci*, 2008 Jun. PMID 18425415. CSE1L/CAS, a microtubule-associated protein, inhibits taxol (paclitaxel)-induced apoptosis but enhances cancer cell apoptosis induced by various chemotherapeutic drugs. Liao CF, et al. *BMB Rep*, 2008 Mar 31. PMID 18377724.