

CSE1L Antibody (monoclonal) (M01)

Mouse monoclonal antibody raised against a partial recombinant CSE1L.

Catalog # AT1650a

Specification

CSE1L Antibody (monoclonal) (M01) - Product Information

Application	IF, WB
Primary Accession	P55060
Other Accession	NM_001316
Reactivity	Human
Host	mouse
Clonality	Monoclonal
Isotype	IgG1 kappa
Calculated MW	110417

CSE1L Antibody (monoclonal) (M01) - Additional Information

Gene ID 1434

Other Names

Exportin-2, Exp2, Cellular apoptosis susceptibility protein, Chromosome segregation 1-like protein, Importin-alpha re-exporter, CSE1L, CAS, XPO2

Target/Specificity

CSE1L (NP_001307, 872 a.a. ~ 971 a.a) partial recombinant protein with GST tag. MW of the GST tag alone is 26 KDa.

Dilution

WB~~1:500~1000

Format

Clear, colorless solution in phosphate buffered saline, pH 7.2 .

Storage

Store at -20°C or lower. Aliquot to avoid repeated freezing and thawing.

Precautions

CSE1L Antibody (monoclonal) (M01) is for research use only and not for use in diagnostic or therapeutic procedures.

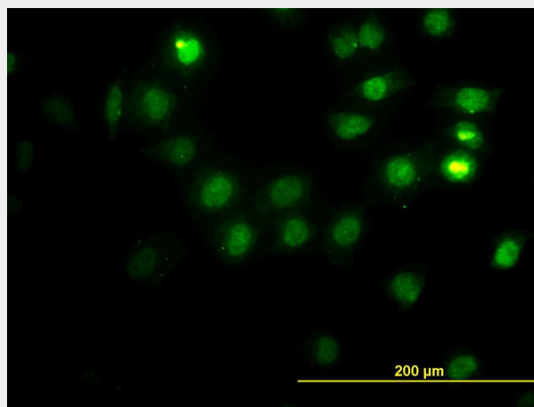
CSE1L Antibody (monoclonal) (M01) - Protocols

Provided below are standard protocols that you may find useful for product applications.

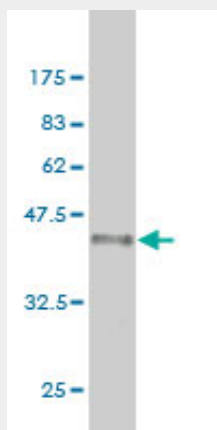
- [Western Blot](#)
- [Blocking Peptides](#)
- [Dot Blot](#)

- [Immunohistochemistry](#)
- [Immunofluorescence](#)
- [Immunoprecipitation](#)
- [Flow Cytometry](#)
- [Cell Culture](#)

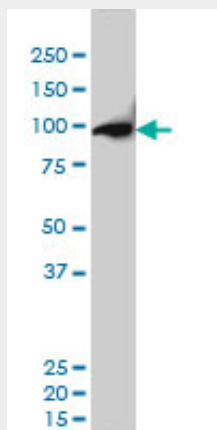
CSE1L Antibody (monoclonal) (M01) - Images



Immunofluorescence of monoclonal antibody to CSE1L on HeLa cell. [antibody concentration 25 ug/ml]



Antibody Reactive Against Recombinant Protein. Western Blot detection against Immunogen (36.74 KDa) .



CSE1L monoclonal antibody (M01), clone 2B7 Western Blot analysis of CSE1L expression in HeLa

S3 NE ((Cat # AT1650a)

CSE1L Antibody (monoclonal) (M01) - Background

Proteins that carry a nuclear localization signal (NLS) are transported into the nucleus by the importin-alpha/beta heterodimer. Importin-alpha binds the NLS, while importin-beta mediates translocation through the nuclear pore complex. After translocation, RanGTP binds importin-beta and displaces importin-alpha. Importin-alpha must then be returned to the cytoplasm, leaving the NLS protein behind. The protein encoded by this gene binds strongly to NLS-free importin-alpha, and this binding is released in the cytoplasm by the combined action of RANBP1 and RANGAP1. In addition, the encoded protein may play a role both in apoptosis and in cell proliferation.

CSE1L Antibody (monoclonal) (M01) - References

1. Interdependency of Cystathione γ -Lyase and Cystathione β -Synthase in Hydrogen Sulfide-Induced Blood Pressure Regulation in Rats. Roy A, Khan AH, Islam MT, Prieto MC, Majid DS. Am J Hypertens. 2011 Aug 25. doi: 10.1038/ajh.2011.149. [Epub ahead of print]