

**CRYM Antibody (monoclonal) (M03)**

Mouse monoclonal antibody raised against a partial recombinant CRYM.

Catalog # AT1645a

**Specification**

---

**CRYM Antibody (monoclonal) (M03) - Product Information**

Application	IP, WB, IHC, E
Primary Accession	<a href="#">O14894</a>
Other Accession	<a href="#">NM_001888</a>
Reactivity	Human
Host	mouse
Clonality	Monoclonal
Isotype	IgG1 Kappa
Calculated MW	33776

**CRYM Antibody (monoclonal) (M03) - Additional Information****Gene ID** 1428**Other Names**

Ketimine reductase mu-crystallin, NADP-regulated thyroid-hormone-binding protein, CRYM, THBP

**Target/Specificity**

CRYM (NP\_001879, 215 a.a. ~ 314 a.a) partial recombinant protein with GST tag. MW of the GST tag alone is 26 KDa.

**Dilution**

WB~~1:500~1000

**Format**

Clear, colorless solution in phosphate buffered saline, pH 7.2 .

**Storage**

Store at -20°C or lower. Aliquot to avoid repeated freezing and thawing.

**Precautions**

CRYM Antibody (monoclonal) (M03) is for research use only and not for use in diagnostic or therapeutic procedures.

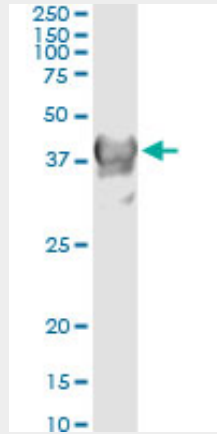
**CRYM Antibody (monoclonal) (M03) - Protocols**

Provided below are standard protocols that you may find useful for product applications.

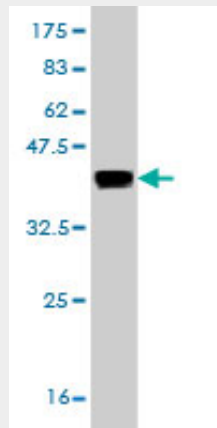
- [Western Blot](#)
- [Blocking Peptides](#)
- [Dot Blot](#)
- [Immunohistochemistry](#)

- [Immunofluorescence](#)
- [Immunoprecipitation](#)
- [Flow Cytometry](#)
- [Cell Culture](#)

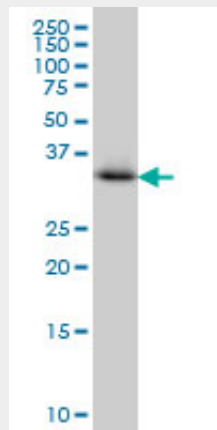
### CRYM Antibody (monoclonal) (M03) - Images



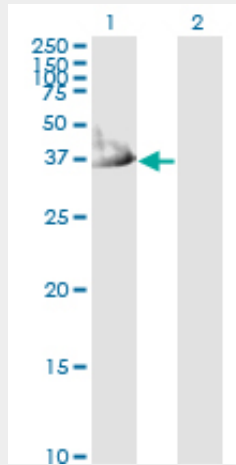
Immunoprecipitation of CRYM transfected lysate using anti-CRYM monoclonal antibody and Protein A Magnetic Bead ([U0007](#)), and immunoblotted with CRYM MaxPab rabbit polyclonal antibody.



Antibody Reactive Against Recombinant Protein. Western Blot detection against Immunogen (36.74 KDa) .

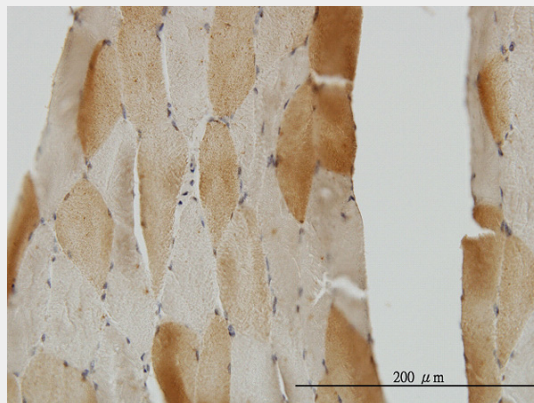


CRYM monoclonal antibody (M03), clone 6B3 Western Blot analysis of CRYM expression in Jurkat (Cat # AT1645a )

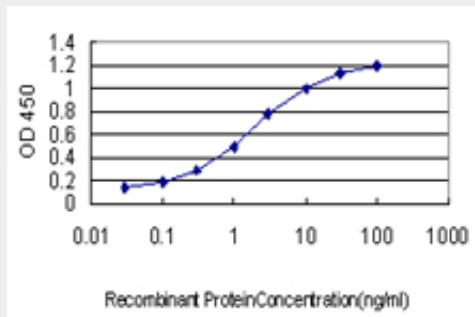


Western Blot analysis of CRYM expression in transfected 293T cell line by CRYM monoclonal antibody (M03), clone 6B3.

Lane 1: CRYM transfected lysate(33.8 KDa).  
 Lane 2: Non-transfected lysate.



Immunoperoxidase of monoclonal antibody to CRYM on formalin-fixed paraffin-embedded human skeletal muscle. [antibody concentration 3 ug/ml]



Detection limit for recombinant GST tagged CRYM is approximately 0.03ng/ml as a capture antibody.

### CRYM Antibody (monoclonal) (M03) - Background

Crystallins are separated into two classes: taxon-specific and ubiquitous. The former class is also

called phylogenetically-restricted crystallins. The latter class constitutes the major proteins of vertebrate eye lens and maintains the transparency and refractive index of the lens. This gene encodes a taxon-specific crystallin protein that binds NADPH and has sequence similarity to bacterial ornithine cyclodeaminases. The encoded protein does not perform a structural role in lens tissue, and instead it binds thyroid hormone for possible regulatory or developmental roles. Mutations in this gene have been associated with autosomal dominant non-syndromic deafness. Multiple alternatively spliced transcript variants have been found for this gene.

### **CRYM Antibody (monoclonal) (M03) - References**

1.The FSHD Atrophic Myotube Phenotype Is Caused by DUX4 Expression.Vanderplanck C, Anseau E, Charron S, Stricwant N, Tassin A, Laoudj-Chenivresse D, Wilton SD, Coppee F, Belayew A.PLoS One. 2011;6(10):e26820. Epub 2011 Oct 28.2.Proteomic Analysis Illuminates a Novel Structural Definition of the Claustrum and Insula.Mathur BN, Caprioli RM, Deutch AY.Cereb Cortex. 2009 Oct;19(10):2372-9. Epub 2009 Jan 23.3.Abnormal expression of mu-crystallin in facioscapulohumeral muscular dystrophy.Reed PW, Corse AM, Porter NC, Flanigan KM, Bloch RJ.Exp Neurol. 2007 Jun;205(2):583-6. Epub 2007 Mar 21.