

**CRMP1 Antibody (monoclonal) (M50)****Mouse monoclonal antibody raised against a partial recombinant CRMP1.****Catalog # AT1629a****Specification**

---

**CRMP1 Antibody (monoclonal) (M50) - Product Information**

Application	WB, E
Primary Accession	<a href="#">O14194</a>
Other Accession	<a href="#">NM_001014809</a>
Reactivity	Human
Host	mouse
Clonality	Monoclonal
Isotype	IgG2a Kappa
Calculated MW	62184

**CRMP1 Antibody (monoclonal) (M50) - Additional Information****Gene ID** 1400**Other Names**

Dihydropyrimidinase-related protein 1, DRP-1, Collapsin response mediator protein 1, CRMP-1, Unc-33-like phosphoprotein 3, ULIP-3, CRMP1, DPYSL1, ULIP3

**Target/Specificity**

CRMP1 (NP\_001014809.1, 221 a.a. ~ 310 a.a) partial recombinant protein with GST tag. MW of the GST tag alone is 26 KDa.

**Dilution**

WB~~1:500~1000

**Format**

Clear, colorless solution in phosphate buffered saline, pH 7.2 .

**Storage**

Store at -20°C or lower. Aliquot to avoid repeated freezing and thawing.

**Precautions**

CRMP1 Antibody (monoclonal) (M50) is for research use only and not for use in diagnostic or therapeutic procedures.

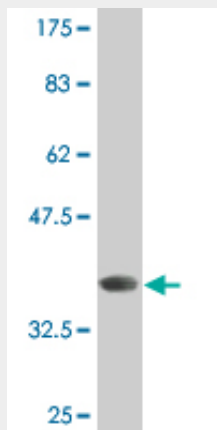
**CRMP1 Antibody (monoclonal) (M50) - Protocols**

Provided below are standard protocols that you may find useful for product applications.

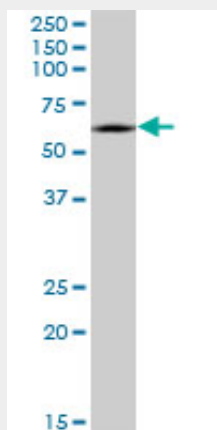
- [Western Blot](#)
- [Blocking Peptides](#)
- [Dot Blot](#)

- [Immunohistochemistry](#)
- [Immunofluorescence](#)
- [Immunoprecipitation](#)
- [Flow Cytometry](#)
- [Cell Culture](#)

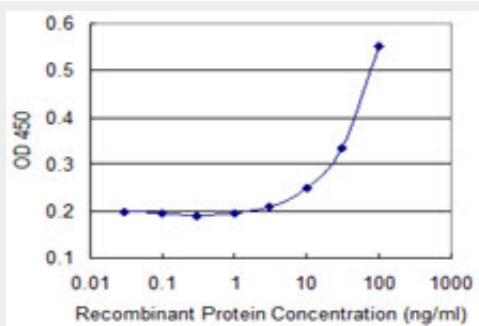
**CRMP1 Antibody (monoclonal) (M50) - Images**



Antibody Reactive Against Recombinant Protein. Western Blot detection against Immunogen (35.64 kDa) .



CRMP1 monoclonal antibody (M50), clone 2B6. Western Blot analysis of CRMP1 expression in IMR-32 ( (Cat # AT1629a )



Detection limit for recombinant GST tagged CRMP1 is 3 ng/ml as a capture antibody.

**CRMP1 Antibody (monoclonal) (M50) - Background**

This gene encodes a member of a family of cytosolic phosphoproteins expressed exclusively in the nervous system. The encoded protein is thought to be a part of the semaphorin signal transduction pathway implicated in semaphorin-induced growth cone collapse during neural development. Alternative splicing results in multiple transcript variants.

### **CRMP1 Antibody (monoclonal) (M50) - References**

Personalized smoking cessation: interactions between nicotine dose, dependence and quit-success genotype score. Rose JE, et al. *Mol Med*, 2010 Jul-Aug. PMID 20379614. Association between genes on chromosome 4p16 and non-syndromic oral clefts in four populations. Ingersoll RG, et al. *Eur J Hum Genet*, 2010 Jun. PMID 20087401. Loss of collapsin response mediator Protein1, as detected by iTRAQ analysis, promotes invasion of human gliomas expressing mutant EGFRvIII. Mukherjee J, et al. *Cancer Res*, 2009 Nov 15. PMID 19903856. Mitochondrial alterations in PINK1 deficient cells are influenced by calcineurin-dependent dephosphorylation of dynamin-related protein 1. Sandebring A, et al. *PLoS One*, 2009 May 27. PMID 19492085. Loss of Drp1 function alters OPA1 processing and changes mitochondrial membrane organization. M?pert K, et al. *Exp Cell Res*, 2009 Aug 1. PMID 19409380.