

**CRKL Antibody (monoclonal) (M03)**

Mouse monoclonal antibody raised against a partial recombinant CRKL.

Catalog # AT1624a

**Specification**

---

**CRKL Antibody (monoclonal) (M03) - Product Information**

Application	IF, WB, E
Primary Accession	<a href="#">P46109</a>
Other Accession	<a href="#">NM_005207</a>
Reactivity	Human
Host	mouse
Clonality	Monoclonal
Isotype	IgG2b Kappa
Calculated MW	33777

**CRKL Antibody (monoclonal) (M03) - Additional Information****Gene ID** 1399**Other Names**

Crk-like protein, CRKL

**Target/Specificity**

CRKL (NP\_005198, 204 a.a. ~ 303 a.a) partial recombinant protein with GST tag. MW of the GST tag alone is 26 KDa.

**Dilution**

WB~~1:500~1000

**Format**

Clear, colorless solution in phosphate buffered saline, pH 7.2 .

**Storage**

Store at -20°C or lower. Aliquot to avoid repeated freezing and thawing.

**Precautions**

CRKL Antibody (monoclonal) (M03) is for research use only and not for use in diagnostic or therapeutic procedures.

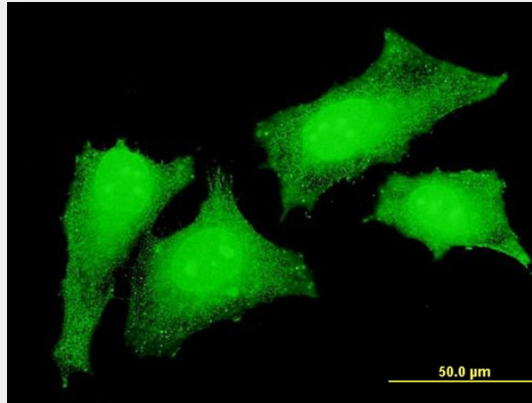
**CRKL Antibody (monoclonal) (M03) - Protocols**

Provided below are standard protocols that you may find useful for product applications.

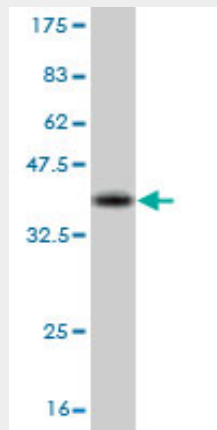
- [Western Blot](#)
- [Blocking Peptides](#)
- [Dot Blot](#)
- [Immunohistochemistry](#)

- [Immunofluorescence](#)
- [Immunoprecipitation](#)
- [Flow Cytometry](#)
- [Cell Culture](#)

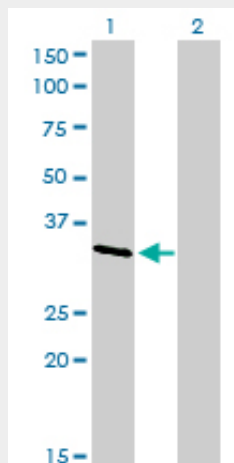
### CRKL Antibody (monoclonal) (M03) - Images



Immunofluorescence of monoclonal antibody to CRKL on HeLa cell . [antibody concentration 10 ug/ml]



Antibody Reactive Against Recombinant Protein. Western Blot detection against Immunogen (36.74 KDa) .

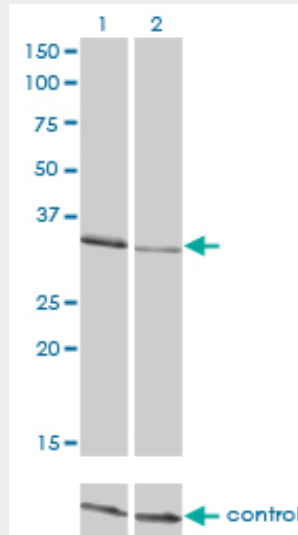


Western Blot analysis of CRKL expression in transfected 293T cell line by CRKL monoclonal

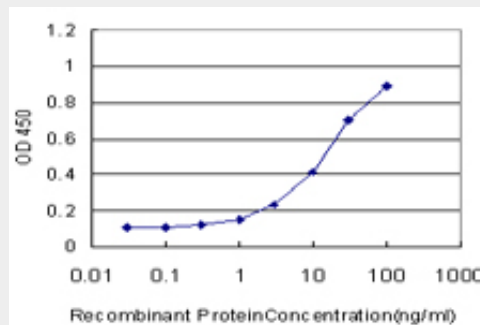
antibody (M03), clone 4B5.

Lane 1: CRKL transfected lysate(33.8 KDa).

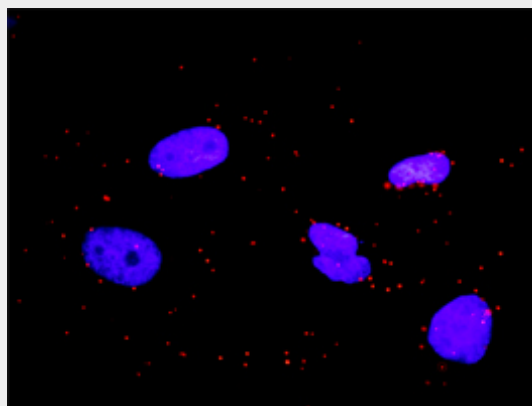
Lane 2: Non-transfected lysate.



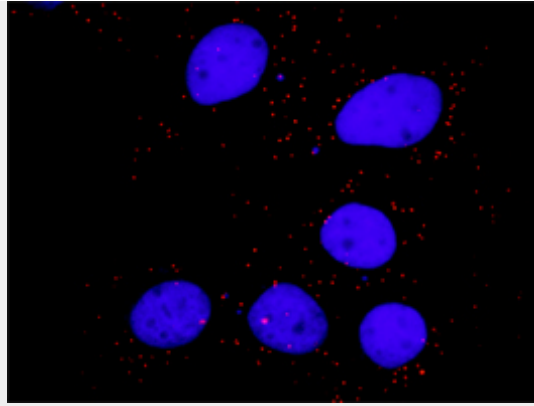
Western blot analysis of CRKL over-expressed 293 cell line, cotransfected with CRKL Validated Chimera RNAi (Cat # AT1624a)



Detection limit for recombinant GST tagged CRKL is approximately 0.3ng/ml as a capture antibody.



Proximity Ligation Analysis of protein-protein interactions between GAB1 and CRKL. HeLa cells were stained with anti-GAB1 rabbit purified polyclonal 1:1200 and anti-CRKL mouse monoclonal antibody 1:50. Each red dot represents the detection of protein-protein interaction complex, and nuclei were counterstained with DAPI (blue).



Proximity Ligation Analysis of protein-protein interactions between PTK2 and CRKL. Huh7 cells were stained with anti-PTK2 rabbit purified polyclonal 1:600 and anti-CRKL mouse monoclonal antibody 1:100. Each red dot represents the detection of protein-protein interaction complex, and nuclei were counterstained with DAPI (blue).

### **CRKL Antibody (monoclonal) (M03) - Background**

This gene encodes a protein kinase containing SH2 and SH3 (src homology) domains which has been shown to activate the RAS and JUN kinase signaling pathways and transform fibroblasts in a RAS-dependent fashion. It is a substrate of the BCR-ABL tyrosine kinase, plays a role in fibroblast transformation by BCR-ABL, and may be oncogenic.

### **CRKL Antibody (monoclonal) (M03) - References**

1.An analysis of protein-protein interactions in cross-talk pathways reveals CRKL as a novel prognostic marker in hepatocellular carcinoma.Liu CH, Chen TC, Chau GY, Jan YH, Chen CH, Hsu CN, Lin KT, Juang YL, Lu PJ, Cheng HC, Chen MH, Chang CF, Ting YS, Kao CY, Hsiao M, Huang CY.Mol Cell Proteomics. 2013 Feb 8. [Epub ahead of print]2.PI3K Links NKG2D Signaling to a CrkL Pathway Involved in Natural Killer Cell Adhesion, Polarity, and Granule Secretion.Segovis CM, Schoon RA, Dick CJ, Nacusi LP, Leibson PJ, Billadeau DD.J Immunol. 2009 Jun 1;182(11):6933-42.