

CREG1 Antibody (monoclonal) (M01)

Mouse monoclonal antibody raised against a partial recombinant CREG1.

Catalog # AT1622a

Specification

CREG1 Antibody (monoclonal) (M01) - Product Information

Application	WB, IHC, E
Primary Accession	O75629
Other Accession	NM_003851
Reactivity	Human
Host	mouse
Clonality	Monoclonal
Isotype	IgG1 Kappa
Calculated MW	24075

CREG1 Antibody (monoclonal) (M01) - Additional Information

Gene ID 8804

Other Names

Protein CREG1, Cellular repressor of E1A-stimulated genes 1, CREG1, CREG

Target/Specificity

CREG1 (NP_003842, 121 a.a. ~ 220 a.a) partial recombinant protein with GST tag. MW of the GST tag alone is 26 KDa.

Dilution

WB~~1:500~1000

Format

Clear, colorless solution in phosphate buffered saline, pH 7.2 .

Storage

Store at -20°C or lower. Aliquot to avoid repeated freezing and thawing.

Precautions

CREG1 Antibody (monoclonal) (M01) is for research use only and not for use in diagnostic or therapeutic procedures.

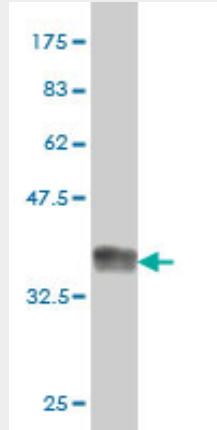
CREG1 Antibody (monoclonal) (M01) - Protocols

Provided below are standard protocols that you may find useful for product applications.

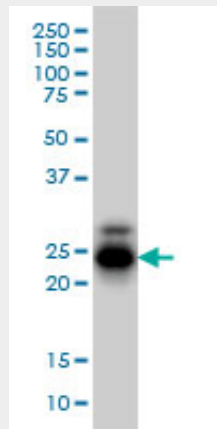
- [Western Blot](#)
- [Blocking Peptides](#)
- [Dot Blot](#)
- [Immunohistochemistry](#)

- [Immunofluorescence](#)
- [Immunoprecipitation](#)
- [Flow Cytometry](#)
- [Cell Culture](#)

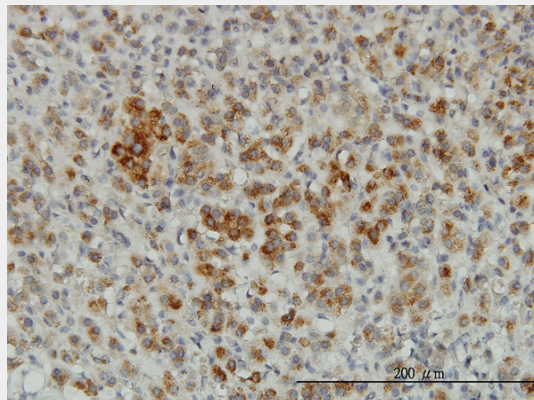
CREG1 Antibody (monoclonal) (M01) - Images



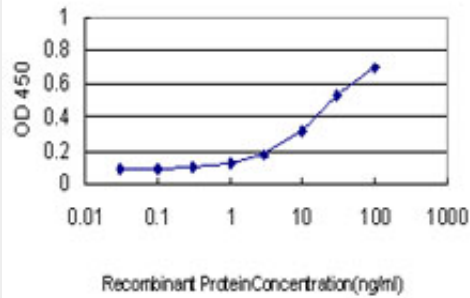
Antibody Reactive Against Recombinant Protein. Western Blot detection against Immunogen (36.74 KDa) .



CREG1 monoclonal antibody (M01), clone 1B7 Western Blot analysis of CREG1 expression in HL-60 ((Cat # AT1622a)



Immunoperoxidase of monoclonal antibody to CREG1 on formalin-fixed paraffin-embedded human adrenal gland. [antibody concentration 3 ug/ml]



Detection limit for recombinant GST tagged CREG1 is approximately 0.3ng/ml as a capture antibody.

CREG1 Antibody (monoclonal) (M01) - Background

The adenovirus E1A protein both activates and represses gene expression to promote cellular proliferation and inhibit differentiation. The protein encoded by this gene antagonizes transcriptional activation and cellular transformation by E1A. This protein shares limited sequence similarity with E1A and binds both the general transcription factor TBP and the tumor suppressor pRb in vitro. This gene may contribute to the transcriptional control of cell growth and differentiation.

CREG1 Antibody (monoclonal) (M01) - References

CREG inhibits migration of human vascular smooth muscle cells by mediating IGF-II endocytosis. Han Y, et al. *Exp Cell Res*, 2009 Nov 15. PMID 19769965. Follow-up of a major linkage peak on chromosome 1 reveals suggestive QTLs associated with essential hypertension: GenNet study. Ehret GB, et al. *Eur J Hum Genet*, 2009 Dec. PMID 19536175. Cellular repressor of E1A-stimulated genes attenuates cardiac hypertrophy and fibrosis. Bian Z, et al. *J Cell Mol Med*, 2009 Jul. PMID 19413895. Pre-B-cell leukemia homeobox 1 (PBX1) shows functional and possible genetic association with bone mineral density variation. Cheung CL, et al. *Hum Mol Genet*, 2009 Feb 15. PMID 19064610. Adenovirus-mediated intra-arterial delivery of cellular repressor of E1A-stimulated genes inhibits neointima formation in rabbits after balloon injury. Han Y, et al. *J Vasc Surg*, 2008 Jul. PMID 18472385.