

## **CREB3L4 Antibody (monoclonal) (M01)**

Mouse monoclonal antibody raised against a partial recombinant CREB3L4.

Catalog # AT1618a

### **Specification**

---

#### **CREB3L4 Antibody (monoclonal) (M01) - Product Information**

Application	IF, WB, E
Primary Accession	<a href="#">Q8TEY5</a>
Other Accession	<a href="#">NM_130898</a>
Reactivity	Human
Host	mouse
Clonality	Monoclonal
Isotype	IgG2a Kappa
Calculated MW	43432

#### **CREB3L4 Antibody (monoclonal) (M01) - Additional Information**

**Gene ID** 148327

##### **Other Names**

Cyclic AMP-responsive element-binding protein 3-like protein 4, cAMP-responsive element-binding protein 3-like protein 4, Androgen-induced basic leucine zipper protein, AlbZIP, Attaching to CRE-like 1, ATCE1, Cyclic AMP-responsive element-binding protein 4, CREB-4, cAMP-responsive element-binding protein 4, Transcript induced in spermiogenesis protein 40, Tisp40, hJAL, Processed cyclic AMP-responsive element-binding protein 3-like protein 4, CREB3L4, AIBZIP, CREB4, JAL

##### **Target/Specificity**

CREB3L4 (NP\_570968, 1 a.a. ~ 110 a.a) partial recombinant protein with GST tag. MW of the GST tag alone is 26 KDa.

##### **Dilution**

WB~~1:500~1000

##### **Format**

Clear, colorless solution in phosphate buffered saline, pH 7.2 .

##### **Storage**

Store at -20°C or lower. Aliquot to avoid repeated freezing and thawing.

##### **Precautions**

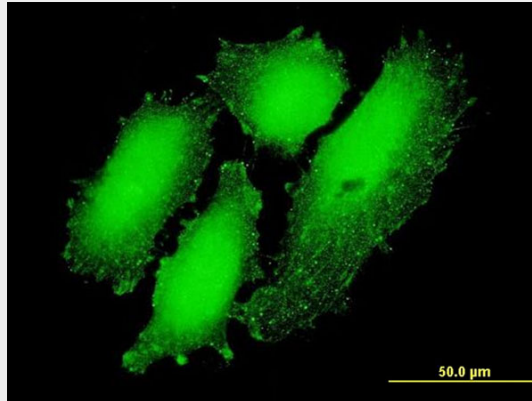
CREB3L4 Antibody (monoclonal) (M01) is for research use only and not for use in diagnostic or therapeutic procedures.

#### **CREB3L4 Antibody (monoclonal) (M01) - Protocols**

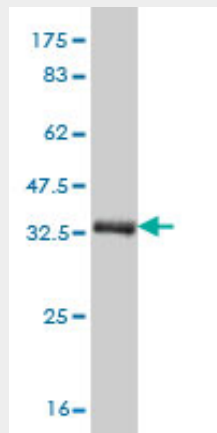
Provided below are standard protocols that you may find useful for product applications.

- [Western Blot](#)
- [Blocking Peptides](#)
- [Dot Blot](#)
- [Immunohistochemistry](#)
- [Immunofluorescence](#)
- [Immunoprecipitation](#)
- [Flow Cytometry](#)
- [Cell Culture](#)

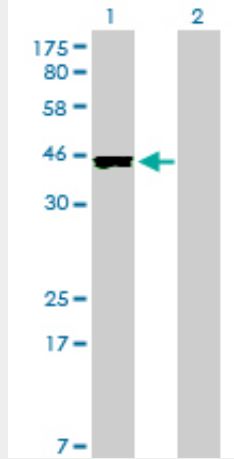
### CREB3L4 Antibody (monoclonal) (M01) - Images



Immunofluorescence of monoclonal antibody to CREB3L4 on HeLa cell . [antibody concentration 10 ug/ml]

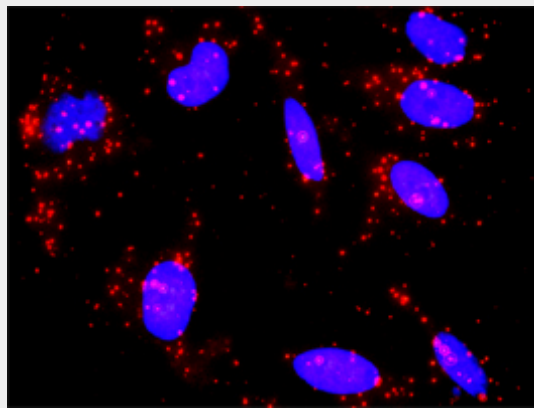


Antibody Reactive Against Recombinant Protein. Western Blot detection against Immunogen (37.84 KDa) .

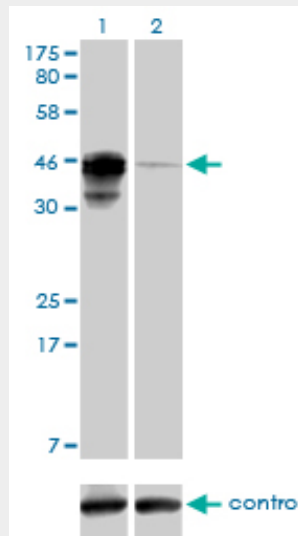


Western Blot analysis of CREB3L4 expression in transfected 293T cell line by CREB3L4 monoclonal antibody (M01), clone 3E3.

Lane 1: CREB3L4 transfected lysate(43.4 KDa).  
 Lane 2: Non-transfected lysate.



Western blot analysis of CREB3L4 over-expressed 293 cell line, cotransfected with CREB3L4 Validated Chimera RNAi ( (Cat # AT1618a )



Detection limit for recombinant GST tagged CREB3L4 is approximately 10ng/ml as a capture

antibody.

### **CREB3L4 Antibody (monoclonal) (M01) - Background**

cAMP response element-binding (CREB) proteins are a family of mammalian transcription activators. For further background information on CREB proteins, see CREB1 (MIM 123810).

### **CREB3L4 Antibody (monoclonal) (M01) - References**

Transcriptional profiling of genes that are regulated by the endoplasmic reticulum-bound transcription factor AlbZIP/CREB3L4 in prostate cells. Ben Aicha S, et al. *Physiol Genomics*, 2007 Oct 22. PMID 17712038. CREB4, a transmembrane bZip transcription factor and potential new substrate for regulation and cleavage by S1P. Stirling J, et al. *Mol Biol Cell*, 2006 Jan. PMID 16236796. Generation and initial analysis of more than 15,000 full-length human and mouse cDNA sequences. Strausberg RL, et al. *Proc Natl Acad Sci U S A*, 2002 Dec 24. PMID 12477932. Molecular cloning and characterization of a novel human cAMP response element-binding ( CREB) gene ( CREB4). Cao G, et al. *J Hum Genet*, 2002. PMID 12111373. Atce1: a novel mouse cyclic adenosine 3',5'-monophosphate-responsive element-binding protein-like gene exclusively expressed in postmeiotic spermatids. Stelzer G, et al. *Endocrinology*, 2002 May. PMID 11956138.

### **CREB3L4 Antibody (monoclonal) (M01) - Citations**

- [The role of CREB3L4 in the proliferation of prostate cancer cells.](#)