

## **CRADD Antibody (monoclonal) (M01)**

Mouse monoclonal antibody raised against a full length recombinant CRADD.

Catalog # AT1616a

### **Specification**

---

#### **CRADD Antibody (monoclonal) (M01) - Product Information**

Application	IF, WB, E
Primary Accession	<a href="#">P78560</a>
Other Accession	<a href="#">BC037905</a>
Reactivity	Human
Host	mouse
Clonality	Monoclonal
Isotype	IgG1 kappa
Calculated MW	22745

#### **CRADD Antibody (monoclonal) (M01) - Additional Information**

**Gene ID** 8738

##### **Other Names**

Death domain-containing protein CRADD, Caspase and RIP adapter with death domain, RIP-associated protein with a death domain, CRADD, RAIDD

##### **Target/Specificity**

CRADD (AAH37905, 1 a.a. ~ 199 a.a) full-length recombinant protein with GST tag. MW of the GST tag alone is 26 KDa.

##### **Dilution**

WB~~1:500~1000

##### **Format**

Clear, colorless solution in phosphate buffered saline, pH 7.2 .

##### **Storage**

Store at -20°C or lower. Aliquot to avoid repeated freezing and thawing.

##### **Precautions**

CRADD Antibody (monoclonal) (M01) is for research use only and not for use in diagnostic or therapeutic procedures.

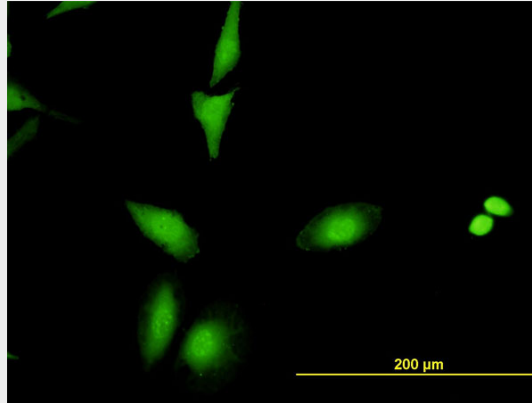
#### **CRADD Antibody (monoclonal) (M01) - Protocols**

Provided below are standard protocols that you may find useful for product applications.

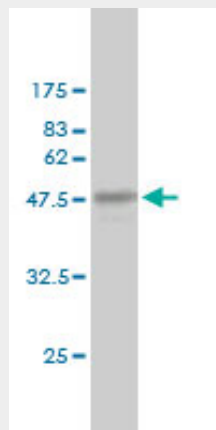
- [Western Blot](#)
- [Blocking Peptides](#)
- [Dot Blot](#)

- [Immunohistochemistry](#)
- [Immunofluorescence](#)
- [Immunoprecipitation](#)
- [Flow Cytometry](#)
- [Cell Culture](#)

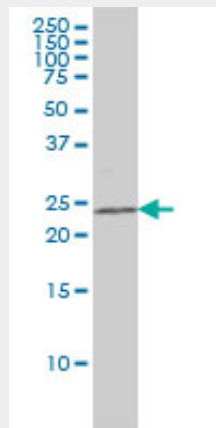
### CRADD Antibody (monoclonal) (M01) - Images



Immunofluorescence of monoclonal antibody to CRADD on HeLa cell. [antibody concentration 10 ug/ml]

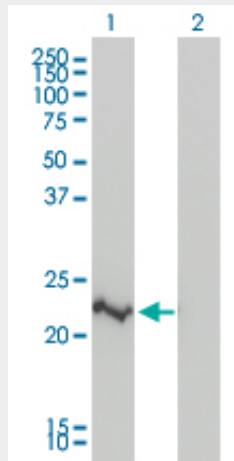


Antibody Reactive Against Recombinant Protein. Western Blot detection against Immunogen (47.63 KDa) .



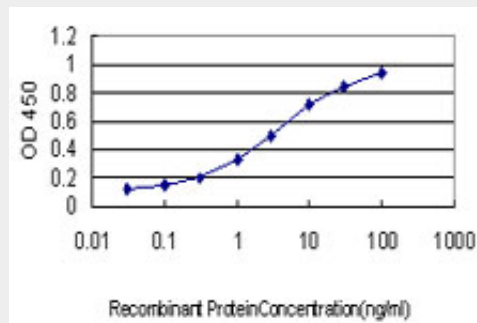
CRADD monoclonal antibody (M01), clone 1F8 Western Blot analysis of CRADD expression in

K-562 ( (Cat # AT1616a )



Western Blot analysis of CRADD expression in transfected 293T cell line by CRADD monoclonal antibody (M01), clone 1F8.

Lane 1: CRADD transfected lysate(23 KDa).  
 Lane 2: Non-transfected lysate.



Detection limit for recombinant GST tagged CRADD is approximately 0.1ng/ml as a capture antibody.

### CRADD Antibody (monoclonal) (M01) - Background

The protein encoded by this gene is a death domain (CARD/DD)-containing protein and has been shown to induce cell apoptosis. Through its CARD domain, this protein interacts with, and thus recruits, caspase 2/ICH1 to the cell death signal transduction complex that includes tumor necrosis factor receptor 1 (TNFR1A), RIPK1/RIP kinase, and numbers of other CARD domain-containing proteins.

### CRADD Antibody (monoclonal) (M01) - References

An approach based on a genome-wide association study reveals candidate loci for narcolepsy. Shimada M, et al. *Hum Genet*, 2010 Oct. PMID 20677014. The role of height-associated loci identified in genome wide association studies in the determination of pediatric stature. Zhao J, et al. *BMC Med Genet*, 2010 Jun 14. PMID 20546612. Identification and analysis of dominant negative mutants of RAIDD and PIDD. Jang TH, et al. *Biochim Biophys Acta*, 2010 Jul. PMID 20406701. New genetic associations detected in a host response study to hepatitis B vaccine. Davila S, et al. *Genes Immun*, 2010 Apr. PMID 20237496. PIDDosome expression and the role of caspase-2 activation for chemotherapy-induced apoptosis in RCCs. Heikaus S, et al. *Cell Oncol*, 2010. PMID 20208132.