

CPSF6 Antibody (monoclonal) (M10)

Mouse monoclonal antibody raised against a partial recombinant CPSF6.

Catalog # AT1613a

Specification

CPSF6 Antibody (monoclonal) (M10) - Product Information

Application	IF, WB, E
Primary Accession	O16630
Other Accession	NM_007007
Reactivity	Human, Mouse
Host	mouse
Clonality	Monoclonal
Isotype	IgG2a Kappa
Calculated MW	59210

CPSF6 Antibody (monoclonal) (M10) - Additional Information

Gene ID 11052

Other Names

Cleavage and polyadenylation specificity factor subunit 6, Cleavage and polyadenylation specificity factor 68 kDa subunit, CFIm68, CPSF 68 kDa subunit, Pre-mRNA cleavage factor Im 68 kDa subunit, Protein HPBR11-4/7, CPSF6, CFIM68

Target/Specificity

CPSF6 (NP_008938, 37 a.a. ~ 136 a.a) partial recombinant protein with GST tag. MW of the GST tag alone is 26 kDa.

Dilution

WB ~ 1:500 ~ 1000

Format

Clear, colorless solution in phosphate buffered saline, pH 7.2 .

Storage

Store at -20°C or lower. Aliquot to avoid repeated freezing and thawing.

Precautions

CPSF6 Antibody (monoclonal) (M10) is for research use only and not for use in diagnostic or therapeutic procedures.

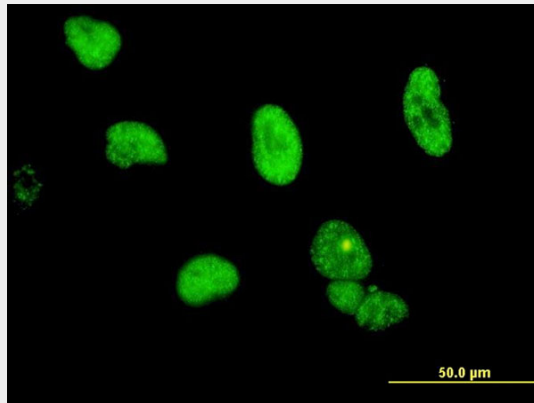
CPSF6 Antibody (monoclonal) (M10) - Protocols

Provided below are standard protocols that you may find useful for product applications.

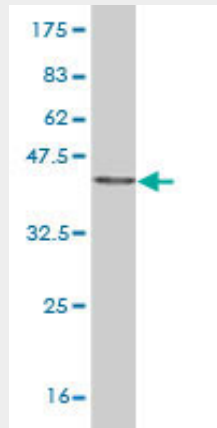
- [Western Blot](#)
- [Blocking Peptides](#)

- [Dot Blot](#)
- [Immunohistochemistry](#)
- [Immunofluorescence](#)
- [Immunoprecipitation](#)
- [Flow Cytometry](#)
- [Cell Culture](#)

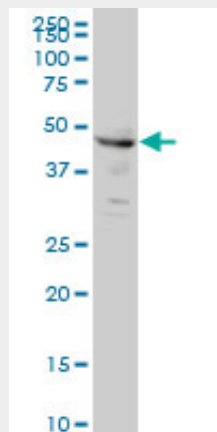
CPSF6 Antibody (monoclonal) (M10) - Images



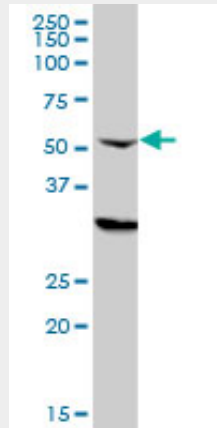
Immunofluorescence of monoclonal antibody to CPSF6 on HeLa cell. [antibody concentration 10 ug/ml]



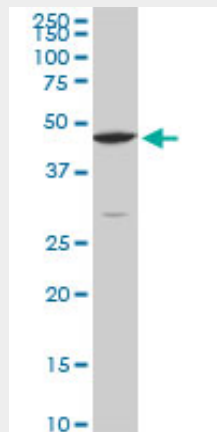
Antibody Reactive Against Recombinant Protein. Western Blot detection against Immunogen (36.74 KDa) .



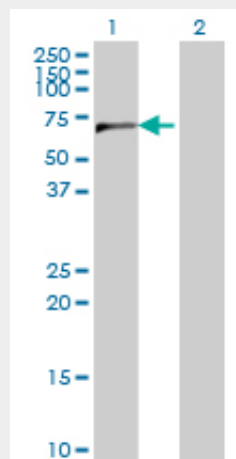
CPSF6 monoclonal antibody (M10), clone 3F11 Western Blot analysis of CPSF6 expression in HeLa ((Cat # AT1613a)



CPSF6 monoclonal antibody (M10), clone 3F11. Western Blot analysis of CPSF6 expression in HL-60 ((Cat # AT1613a)



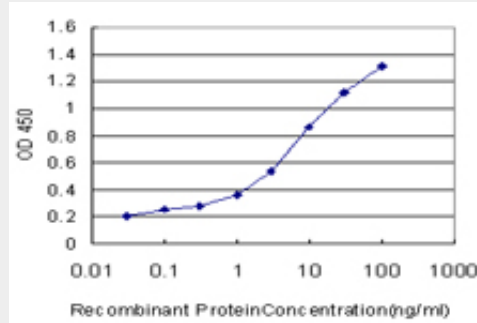
CPSF6 monoclonal antibody (M10), clone 3F11. Western Blot analysis of CPSF6 expression in Raw 264.7((Cat # AT1613a)



Western Blot analysis of CPSF6 expression in transfected 293T cell line by CPSF6 monoclonal antibody (M10), clone 3F11.

Lane 1: CPSF6 transfected lysate(59.21 KDa).

Lane 2: Non-transfected lysate.



Detection limit for recombinant GST tagged CPSF6 is approximately 0.03ng/ml as a capture antibody.

CPSF6 Antibody (monoclonal) (M10) - Background

The protein encoded by this gene is one subunit of a cleavage factor required for 3' RNA cleavage and polyadenylation processing. The interaction of the protein with the RNA is one of the earliest steps in the assembly of the 3' end processing complex and facilitates the recruitment of other processing factors. The cleavage factor complex is composed of four polypeptides. This gene encodes the 68kD subunit. It has a domain organization reminiscent of spliceosomal proteins.

CPSF6 Antibody (monoclonal) (M10) - References

1.Evidence that cleavage factor Im is a heterotetrameric protein complex controlling alternative polyadenylation.Kim S, Yamamoto J, Chen Y, Aida M, Wada T, Handa H, Yamaguchi Y.Genes Cells. 2010 Sep 1;15(9):1003-13. Epub 2010 Jul 29.2.Novel snail1 target proteins in human colon cancer identified by proteomic analysis.Larriba MJ, Casado-Vela J, Pendas-Franco N, Pena R, Garcia de Herreros A, Berciano MT, Lafarga M, Casal JI, Munoz A.PLoS One. 2010 Apr 20;5(4):e10221.