

CLU Antibody (monoclonal) (M01)
Mouse monoclonal antibody raised against a partial recombinant CLU.
Catalog # AT1564a

Specification

CLU Antibody (monoclonal) (M01) - Product Information

Application	WB, E
Primary Accession	P10909
Other Accession	NM_001831
Reactivity	Human
Host	mouse
Clonality	Monoclonal
Isotype	IgG1 Kappa
Calculated MW	52495

CLU Antibody (monoclonal) (M01) - Additional Information

Gene ID 1191

Other Names

Clusterin, Aging-associated gene 4 protein, Apolipoprotein J, Apo-J, Complement cytolysis inhibitor, CLI, Complement-associated protein SP-40, Ku70-binding protein 1, NA1/NA2, Testosterone-repressed prostate message 2, TRPM-2, Clusterin beta chain, ApoJalpha, Complement cytolysis inhibitor a chain, Clusterin alpha chain, ApoJbeta, Complement cytolysis inhibitor b chain, CLU, APOJ, CLI, KUB1

Target/Specificity

CLU (NP_001822, 402 a.a. ~ 501 a.a) partial recombinant protein with GST tag. MW of the GST tag alone is 26 KDa.

Dilution

WB~~1:500~1000

Format

Clear, colorless solution in phosphate buffered saline, pH 7.2 .

Storage

Store at -20°C or lower. Aliquot to avoid repeated freezing and thawing.

Precautions

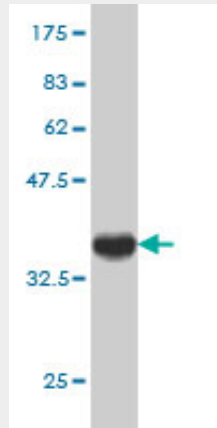
CLU Antibody (monoclonal) (M01) is for research use only and not for use in diagnostic or therapeutic procedures.

CLU Antibody (monoclonal) (M01) - Protocols

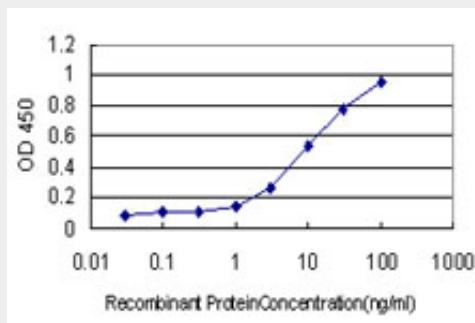
Provided below are standard protocols that you may find useful for product applications.

- [Western Blot](#)
- [Blocking Peptides](#)
- [Dot Blot](#)
- [Immunohistochemistry](#)
- [Immunofluorescence](#)
- [Immunoprecipitation](#)
- [Flow Cytometry](#)
- [Cell Culture](#)

CLU Antibody (monoclonal) (M01) - Images



Antibody Reactive Against Recombinant Protein. Western Blot detection against Immunogen (36.74 KDa) .



Detection limit for recombinant GST tagged CLU is approximately 0.1ng/ml as a capture antibody.

CLU Antibody (monoclonal) (M01) - Background

The protein encoded by this gene appears to be involved in several basic biological events such as cell death, tumor progression, and neurodegenerative disorders. However, the function of this protein is unknown. Three transcript variants encoding different isoforms have been found for this gene, and one of them is secreted and processed into a mature form.

CLU Antibody (monoclonal) (M01) - References

Genetic variations in the CLU and PICALM genes are associated with cognitive function in the oldest old. Mengel-From J, et al. *Neurobiol Aging*, 2010 Aug 23. PMID 20739100. Association Analysis Between the rs11136000 Single Nucleotide Polymorphism in Clusterin Gene, rs3851179 Single Nucleotide Polymorphism in Clathrin Assembly Lymphoid Myeloid Protein Gene and the Patients with Schizophrenia in the Chinese Population. Zhou Y, et al. *DNA Cell Biol*, 2010 Aug 25. PMID 20738160. Meta-analysis Confirms CR1, CLU, and PICALM as Alzheimer Disease Risk Loci and Reveals Interactions With APOE Genotypes. Jun G, et al. *Arch Neurol*, 2010 Sep 3. PMID

20697030.Implication of CLU gene polymorphisms in Chinese patients with Alzheimer's disease. Yu JT, et al. Clin Chim Acta, 2010 Oct 9. PMID 20599866.Association of CLU and PICALM variants with Alzheimer's disease. Kamboh MI, et al. Neurobiol Aging, 2010 Jun 4. PMID 20570404.