

**CLPP Antibody (monoclonal) (M01)**

Mouse monoclonal antibody raised against a partial recombinant CLPP.

Catalog # AT1562a

**Specification**

---

**CLPP Antibody (monoclonal) (M01) - Product Information**

Application	WB, IHC, E
Primary Accession	<a href="#">Q16740</a>
Other Accession	<a href="#">NM_006012</a>
Reactivity	Human, Rat
Host	mouse
Clonality	Monoclonal
Isotype	IgG2b Kappa
Calculated MW	30180

**CLPP Antibody (monoclonal) (M01) - Additional Information****Gene ID** 8192**Other Names**

ATP-dependent Clp protease proteolytic subunit, mitochondrial, Endopeptidase Clp, CLPP

**Target/Specificity**

CLPP (NP\_006003, 178 a.a. ~ 277 a.a) partial recombinant protein with GST tag. MW of the GST tag alone is 26 KDa.

**Dilution**

WB~~1:500~1000

**Format**

Clear, colorless solution in phosphate buffered saline, pH 7.2 .

**Storage**

Store at -20°C or lower. Aliquot to avoid repeated freezing and thawing.

**Precautions**

CLPP Antibody (monoclonal) (M01) is for research use only and not for use in diagnostic or therapeutic procedures.

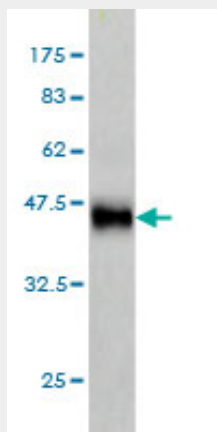
**CLPP Antibody (monoclonal) (M01) - Protocols**

Provided below are standard protocols that you may find useful for product applications.

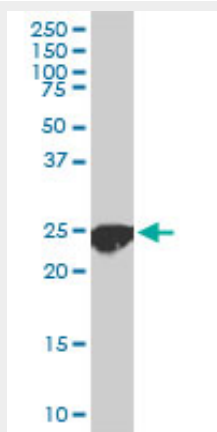
- [Western Blot](#)
- [Blocking Peptides](#)
- [Dot Blot](#)
- [Immunohistochemistry](#)

- [Immunofluorescence](#)
- [Immunoprecipitation](#)
- [Flow Cytometry](#)
- [Cell Culture](#)

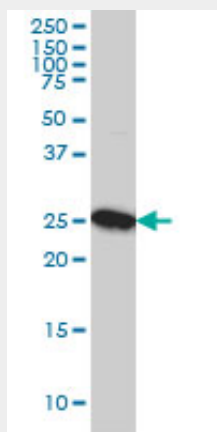
### CLPP Antibody (monoclonal) (M01) - Images



Antibody Reactive Against Recombinant Protein. Western Blot detection against Immunogen (36.74 KDa) .

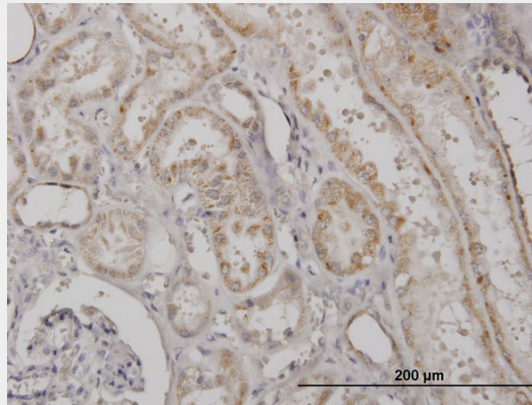


CLPP monoclonal antibody (M01), clone 3E2. Western Blot analysis of CLPP expression in PC-12 (Cat # AT1562a )

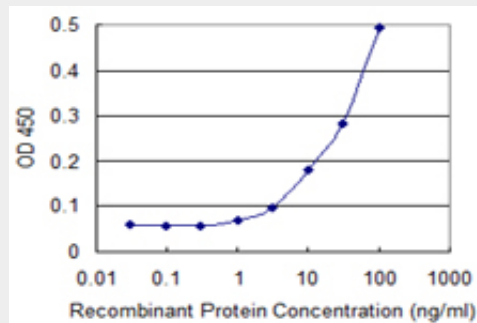


CLPP monoclonal antibody (M01), clone 3E2 Western Blot analysis of CLPP expression in A-431 (

(Cat # AT1562a )



Immunoperoxidase of monoclonal antibody to CLPP on formalin-fixed paraffin-embedded human kidney. [antibody concentration 1 ug/ml]



Detection limit for recombinant GST tagged CLPP is 1 ng/ml as a capture antibody.

### **CLPP Antibody (monoclonal) (M01) - Background**

The protein encoded by this gene belongs to the peptidase family S14 and hydrolyzes proteins into small peptides in the presence of ATP and magnesium. The protein is transported into mitochondrial matrix and is associated with the inner mitochondrial membrane.

### **CLPP Antibody (monoclonal) (M01) - References**

1. Diphenylarsinic acid promotes degradation of glutaminase C by mitochondrial Lon protease. Kita K, Suzuki T, Ochi T. J Biol Chem. 2012 Apr 5. [Epub ahead of print]