

CIDEB Antibody (monoclonal) (M01)

Mouse monoclonal antibody raised against a partial recombinant CIDEB.

Catalog # AT1538a

Specification

CIDEB Antibody (monoclonal) (M01) - Product Information

Application	WB, IHC, E
Primary Accession	O9UHD4
Other Accession	NM_014430
Reactivity	Human
Host	mouse
Clonality	Monoclonal
Isotype	IgG1 Kappa
Calculated MW	24678

CIDEB Antibody (monoclonal) (M01) - Additional Information**Gene ID** 27141**Other Names**

Cell death activator CIDE-B, Cell death-inducing DFFA-like effector B, CIDEB

Target/Specificity

CIDEB (NP_055245, 3 a.a. ~ 110 a.a) partial recombinant protein with GST tag. MW of the GST tag alone is 26 KDa.

Dilution

WB~~1:500~1000

Format

Clear, colorless solution in phosphate buffered saline, pH 7.2 .

Storage

Store at -20°C or lower. Aliquot to avoid repeated freezing and thawing.

Precautions

CIDEB Antibody (monoclonal) (M01) is for research use only and not for use in diagnostic or therapeutic procedures.

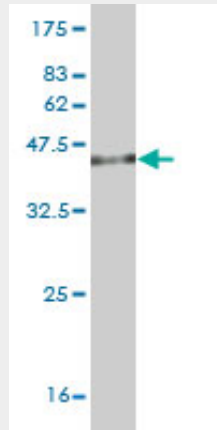
CIDEB Antibody (monoclonal) (M01) - Protocols

Provided below are standard protocols that you may find useful for product applications.

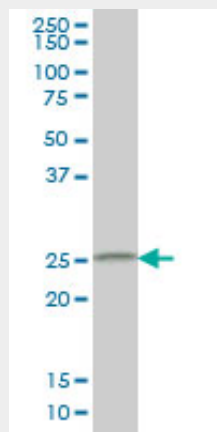
- [Western Blot](#)
- [Blocking Peptides](#)
- [Dot Blot](#)
- [Immunohistochemistry](#)

- [Immunofluorescence](#)
- [Immunoprecipitation](#)
- [Flow Cytometry](#)
- [Cell Culture](#)

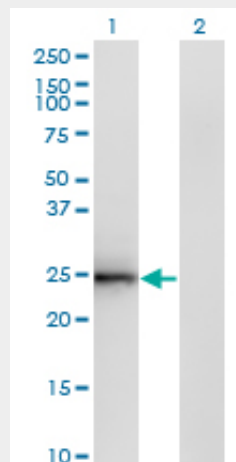
CIDEB Antibody (monoclonal) (M01) - Images



Antibody Reactive Against Recombinant Protein. Western Blot detection against Immunogen (37.62 KDa) .

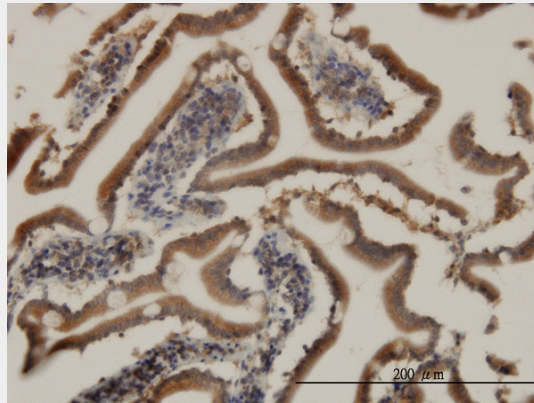


CIDEB monoclonal antibody (M01), clone 2A10 Western Blot analysis of CIDEB expression in HepG2 ((Cat # AT1538a)

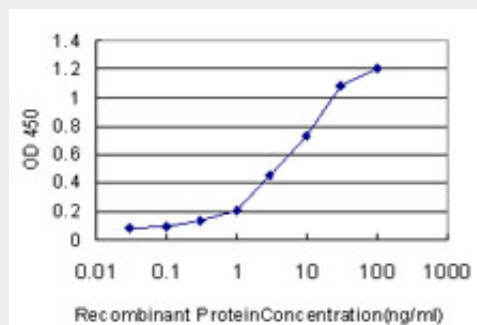


Western Blot analysis of CIDEB expression in transfected 293T cell line by CIDEB monoclonal antibody (M01), clone 2A10.

Lane 1: CIDEB transfected lysate(24.7 KDa).
Lane 2: Non-transfected lysate.



Immunoperoxidase of monoclonal antibody to CIDEB on formalin-fixed paraffin-embedded human small Intestine. [antibody concentration 3 ug/ml]



Detection limit for recombinant GST tagged CIDEB is approximately 0.3ng/ml as a capture antibody.

CIDEB Antibody (monoclonal) (M01) - References

Polymorphisms in mitochondrial genes and prostate cancer risk. Wang L, et al. *Cancer Epidemiol Biomarkers Prev*, 2008 Dec. PMID 19064571. Identification of intrahepatic cholangiocarcinoma related genes by comparison with normal liver tissues using expressed sequence tags. Wang AG, et al. *Biochem Biophys Res Commun*, 2006 Jul 7. PMID 16712791. Dual promoters control the cell-specific expression of the human cell death-inducing DFF45-like effector B gene. Da L, et al. *Biochem J*, 2006 Feb 1. PMID 16248853. The status, quality, and expansion of the NIH full-length cDNA project: the Mammalian Gene Collection (MGC). Gerhard DS, et al. *Genome Res*, 2004 Oct. PMID 15489334. Complete sequencing and characterization of 21,243 full-length human cDNAs. Ota T, et al. *Nat Genet*, 2004 Jan. PMID 14702039.