

CHRM2 Antibody (monoclonal) (M01)

Mouse monoclonal antibody raised against a partial recombinant CHRM2.

Catalog # AT1529a

Specification

CHRM2 Antibody (monoclonal) (M01) - Product Information

Application	WB, E
Primary Accession	P08172
Other Accession	NM_000739
Reactivity	Human
Host	mouse
Clonality	Monoclonal
Isotype	IgG2a Kappa
Calculated MW	51715

CHRM2 Antibody (monoclonal) (M01) - Additional Information**Gene ID** 1129**Other Names**

Muscarinic acetylcholine receptor M2, CHRM2

Target/Specificity

CHRM2 (AAI06743.1, 251 a.a. ~ 350 a.a) partial recombinant protein with GST tag. MW of the GST tag alone is 26 KDa.

Dilution

WB~~1:500~1000

Format

Clear, colorless solution in phosphate buffered saline, pH 7.2 .

Storage

Store at -20°C or lower. Aliquot to avoid repeated freezing and thawing.

Precautions

CHRM2 Antibody (monoclonal) (M01) is for research use only and not for use in diagnostic or therapeutic procedures.

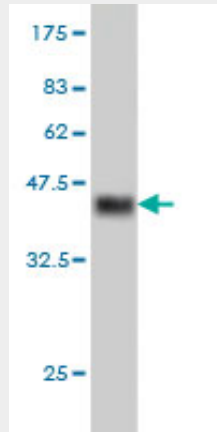
CHRM2 Antibody (monoclonal) (M01) - Protocols

Provided below are standard protocols that you may find useful for product applications.

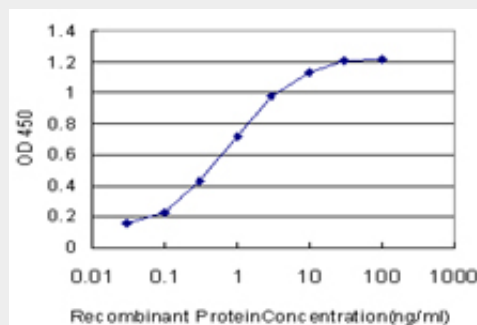
- [Western Blot](#)
- [Blocking Peptides](#)
- [Dot Blot](#)
- [Immunohistochemistry](#)

- [Immunofluorescence](#)
- [Immunoprecipitation](#)
- [Flow Cytometry](#)
- [Cell Culture](#)

CHRM2 Antibody (monoclonal) (M01) - Images



Antibody Reactive Against Recombinant Protein. Western Blot detection against Immunogen (36.74 KDa) .



Detection limit for recombinant GST tagged CHRM2 is approximately 0.03ng/ml as a capture antibody.

CHRM2 Antibody (monoclonal) (M01) - Background

The muscarinic cholinergic receptors belong to a larger family of G protein-coupled receptors. The functional diversity of these receptors is defined by the binding of acetylcholine to these receptors and includes cellular responses such as adenylate cyclase inhibition, phosphoinositide degradation, and potassium channel mediation. Muscarinic receptors influence many effects of acetylcholine in the central and peripheral nervous system. The muscarinic cholinergic receptor 2 is involved in mediation of bradycardia and a decrease in cardiac contractility. Multiple alternatively spliced transcript variants have been described for this gene.

CHRM2 Antibody (monoclonal) (M01) - References

Variation at the NFATC2 Locus Increases the Risk of Thiazolidinedione-Induced Edema in the Diabetes REduction Assessment with ramipril and rosiglitazone Medication (DREAM) Study. Bailey SD, et al. Diabetes Care, 2010 Jul 13. PMID 20628086. Physiogenomic analysis of statin-treated patients: domain-specific counter effects within the ACACB gene on low-density lipoprotein cholesterol? Rua?o G, et al. Pharmacogenomics, 2010 Jul. PMID 20602615. Personalized smoking cessation: interactions between nicotine dose, dependence and quit-success genotype score. Rose JE, et al. Mol Med, 2010 Jul-Aug. PMID 20379614. Genetic variation in cholinergic muscarinic-2

receptor gene modulates M(2) receptor binding in vivo and accounts for reduced binding in bipolar disorder. Cannon DM, et al. Mol Psychiatry, 2010 Mar 30. PMID 20351719. Poor replication of candidate genes for major depressive disorder using genome-wide association data. Bosker FJ, et al. Mol Psychiatry, 2010 Mar 30. PMID 20351714.