

## **CHN1 Antibody (monoclonal) (M03)**

Mouse monoclonal antibody raised against a partial recombinant CHN1.

Catalog # AT1524a

### **Specification**

---

#### **CHN1 Antibody (monoclonal) (M03) - Product Information**

Application	WB, E
Primary Accession	<a href="#">P15882</a>
Other Accession	<a href="#">BC011393</a>
Reactivity	Human, Mouse, Rat
Host	mouse
Clonality	Monoclonal
Isotype	IgG2a Kappa
Calculated MW	53172

#### **CHN1 Antibody (monoclonal) (M03) - Additional Information**

**Gene ID** 1123

##### **Other Names**

N-chimaerin, A-chimaerin, Alpha-chimerin, N-chimerin, NC, Rho GTPase-activating protein 2, CHN1, ARHGAP2, CHN

##### **Target/Specificity**

CHN1 (AAH11393, 91 a.a. ~ 200 a.a) partial recombinant protein with GST tag. MW of the GST tag alone is 26 KDa.

##### **Dilution**

WB~~1:500~1000

##### **Format**

Clear, colorless solution in phosphate buffered saline, pH 7.2 .

##### **Storage**

Store at -20°C or lower. Aliquot to avoid repeated freezing and thawing.

##### **Precautions**

CHN1 Antibody (monoclonal) (M03) is for research use only and not for use in diagnostic or therapeutic procedures.

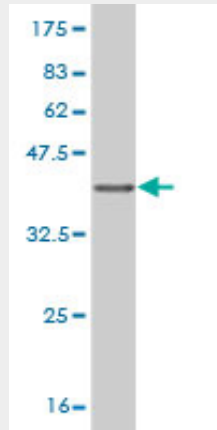
#### **CHN1 Antibody (monoclonal) (M03) - Protocols**

Provided below are standard protocols that you may find useful for product applications.

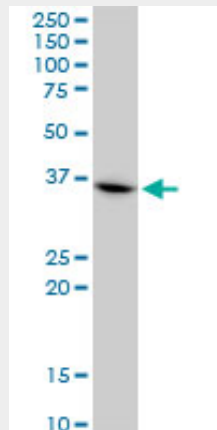
- [Western Blot](#)
- [Blocking Peptides](#)
- [Dot Blot](#)

- [Immunohistochemistry](#)
- [Immunofluorescence](#)
- [Immunoprecipitation](#)
- [Flow Cytometry](#)
- [Cell Culture](#)

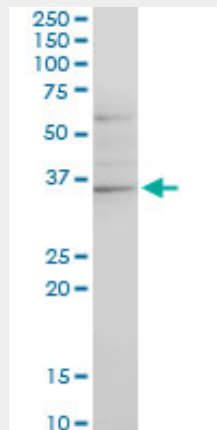
### CHN1 Antibody (monoclonal) (M03) - Images



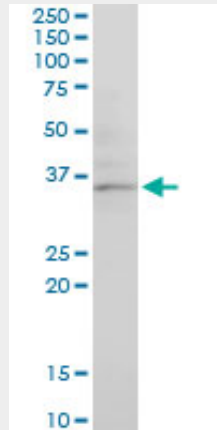
Antibody Reactive Against Recombinant Protein. Western Blot detection against Immunogen (37.84 KDa) .



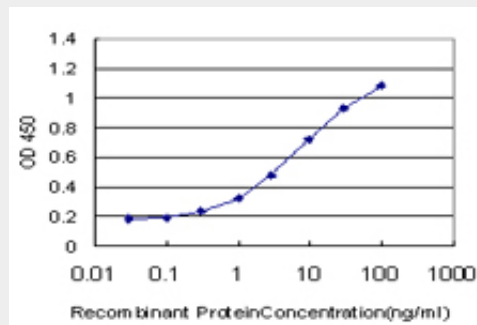
CHN1 monoclonal antibody (M03), clone 3A3. Western Blot analysis of CHN1 expression in HeLa (Cat # AT1524a)



CHN1 monoclonal antibody (M03), clone 3A3. Western Blot analysis of CHN1 expression in PC-12((Cat # AT1524a )



CHN1 monoclonal antibody (M03), clone 3A3. Western Blot analysis of CHN1 expression in NIH/3T3((Cat # AT1524a )



Detection limit for recombinant GST tagged CHN1 is approximately 0.1ng/ml as a capture antibody.

### CHN1 Antibody (monoclonal) (M03) - Background

This gene encodes GTPase-activating protein for p21-rac and a phorbol ester receptor. It plays an important role in ocular motor axon pathfinding. Heterozygous missense mutations in this gene cause Duane's retraction syndrome 2 (DURS2). Multiple transcript variants encoding different isoforms have been found for this gene.

### CHN1 Antibody (monoclonal) (M03) - References

1. Tsc2-Rheb signaling regulates EphA-mediated axon guidance. Nie D, Di Nardo A, Han JM, Baharanyi H, Kramvis I, Huynh T, Dabora S, Codeluppi S, Pandolfi PP, Pasquale EB, Sahin M. *Nat Neurosci*. 2010 Jan 10. [Epub ahead of print]