

**CFL2 Antibody (monoclonal) (M03)**

Mouse monoclonal antibody raised against a partial recombinant CFL2.

Catalog # AT1507a

**Specification**

---

**CFL2 Antibody (monoclonal) (M03) - Product Information**

Application	IF, WB, IHC, E
Primary Accession	<a href="#">O9Y281</a>
Other Accession	<a href="#">NM_021914</a>
Reactivity	Human
Host	mouse
Clonality	Monoclonal
Isotype	IgG1 Kappa
Calculated MW	18737

**CFL2 Antibody (monoclonal) (M03) - Additional Information****Gene ID** 1073**Other Names**

Cofilin-2, Cofilin, muscle isoform, CFL2

**Target/Specificity**

CFL2 (NP\_068733, 57 a.a. ~ 166 a.a) partial recombinant protein with GST tag. MW of the GST tag alone is 26 KDa.

**Dilution**

WB~~1:500~1000

**Format**

Clear, colorless solution in phosphate buffered saline, pH 7.2 .

**Storage**

Store at -20°C or lower. Aliquot to avoid repeated freezing and thawing.

**Precautions**

CFL2 Antibody (monoclonal) (M03) is for research use only and not for use in diagnostic or therapeutic procedures.

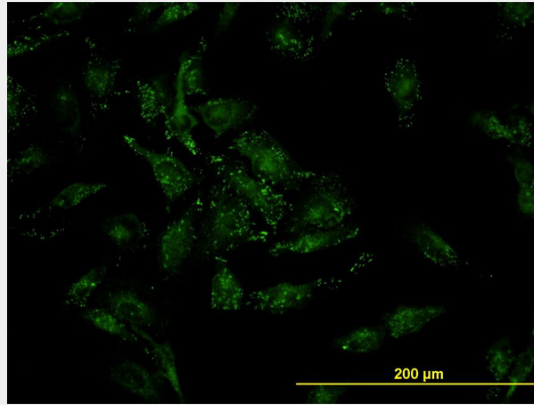
**CFL2 Antibody (monoclonal) (M03) - Protocols**

Provided below are standard protocols that you may find useful for product applications.

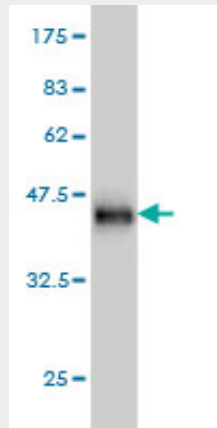
- [Western Blot](#)
- [Blocking Peptides](#)
- [Dot Blot](#)
- [Immunohistochemistry](#)

- [Immunofluorescence](#)
- [Immunoprecipitation](#)
- [Flow Cytometry](#)
- [Cell Culture](#)

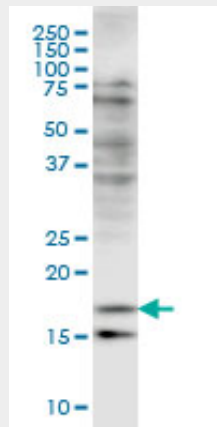
### CFL2 Antibody (monoclonal) (M03) - Images



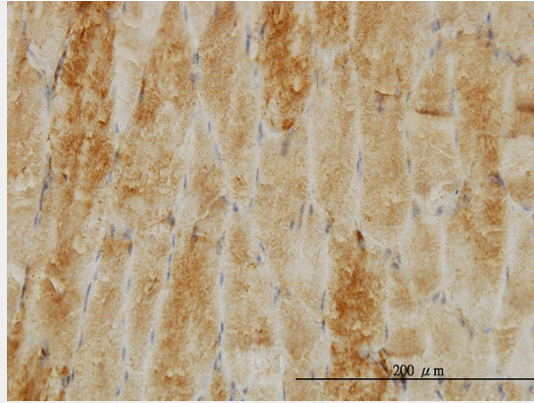
Immunofluorescence of monoclonal antibody to CFL2 on HeLa cell. [antibody concentration 10 ug/ml]



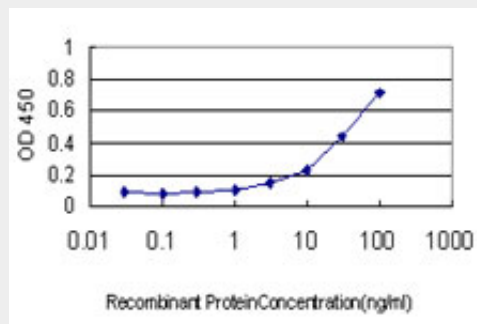
Antibody Reactive Against Recombinant Protein. Western Blot detection against Immunogen (37.84 KDa) .



CFL2 monoclonal antibody (M03), clone 6G9 Western Blot analysis of CFL2 expression in HeLa (Cat # AT1507a )



Immunoperoxidase of monoclonal antibody to CFL2 on formalin-fixed paraffin-embedded human skeletal muscle. [antibody concentration 8 ug/ml]



Detection limit for recombinant GST tagged CFL2 is approximately 1ng/ml as a capture antibody.

### **CFL2 Antibody (monoclonal) (M03) - Background**

This gene encodes an intracellular protein that is involved in the regulation of actin-filament dynamics. This protein is a major component of intranuclear and cytoplasmic actin rods. It can bind G- and F-actin in a 1:1 ratio of cofilin to actin, and it reversibly controls actin polymerization and depolymerization in a pH-dependent manner. Mutations in this gene cause nemaline myopathy type 7, a form of congenital myopathy. Alternative splicing results in multiple transcript variants.

### **CFL2 Antibody (monoclonal) (M03) - References**

Muscle LIM protein interacts with cofilin 2 and regulates F-actin dynamics in cardiac and skeletal muscle. Papalouka V, et al. Mol Cell Biol, 2009 Nov. PMID 19752190. Cofilin activation in peripheral CD4 T cells of HIV-1 infected patients: a pilot study. Wu Y, et al. Retrovirology, 2008 Oct 17. PMID 18928553. Nemaline myopathy with minicores caused by mutation of the CFL2 gene encoding the skeletal muscle actin-binding protein, cofilin-2. Agrawal PB, et al. Am J Hum Genet, 2007 Jan. PMID 17160903. Global, in vivo, and site-specific phosphorylation dynamics in signaling networks. Olsen JV, et al. Cell, 2006 Nov 3. PMID 17081983. Cofilin cross-bridges adjacent actin protomers and replaces part of the longitudinal F-actin interface. Kudryashov DS, et al. J Mol Biol, 2006 May 5. PMID 16530787.