

CFL1 Antibody (monoclonal) (M04)

Mouse monoclonal antibody raised against a full length recombinant CFL1.

Catalog # AT1506a

Specification

CFL1 Antibody (monoclonal) (M04) - Product Information

Application	IF, WB, IHC, E
Primary Accession	P23528
Other Accession	BC011005
Reactivity	Human, Mouse
Host	mouse
Clonality	Monoclonal
Isotype	IgG2a Kappa
Calculated MW	18502

CFL1 Antibody (monoclonal) (M04) - Additional Information

Gene ID 1072

Other Names

Cofilin-1, 18 kDa phosphoprotein, p18, Cofilin, non-muscle isoform, CFL1, CFL

Target/Specificity

CFL1 (AAH11005, 1 a.a. ~ 166 a.a) full-length recombinant protein with GST tag. MW of the GST tag alone is 26 KDa.

Dilution

WB~~1:500~1000

Format

Clear, colorless solution in phosphate buffered saline, pH 7.2 .

Storage

Store at -20°C or lower. Aliquot to avoid repeated freezing and thawing.

Precautions

CFL1 Antibody (monoclonal) (M04) is for research use only and not for use in diagnostic or therapeutic procedures.

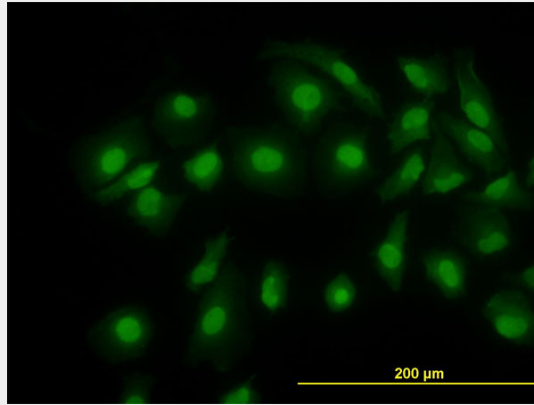
CFL1 Antibody (monoclonal) (M04) - Protocols

Provided below are standard protocols that you may find useful for product applications.

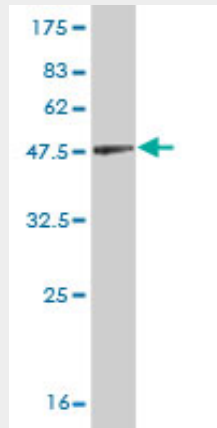
- [Western Blot](#)
- [Blocking Peptides](#)
- [Dot Blot](#)
- [Immunohistochemistry](#)

- [Immunofluorescence](#)
- [Immunoprecipitation](#)
- [Flow Cytometry](#)
- [Cell Culture](#)

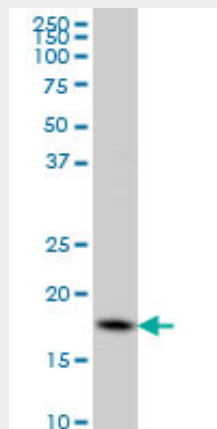
CFL1 Antibody (monoclonal) (M04) - Images



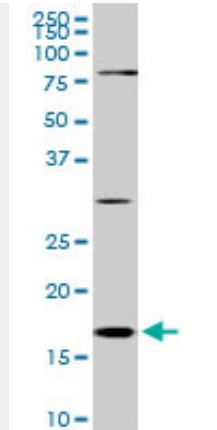
Immunofluorescence of monoclonal antibody to CFL1 on HeLa cell. [antibody concentration 10 ug/ml]



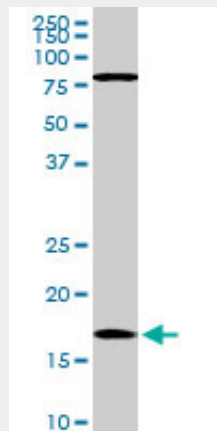
Antibody Reactive Against Recombinant Protein. Western Blot detection against Immunogen (44 KDa) .



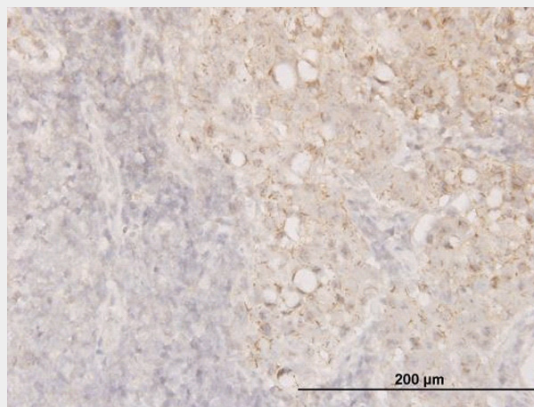
CFL1 monoclonal antibody (M04), clone 1A1 Western Blot analysis of CFL1 expression in HeLa (Cat # AT1506a)



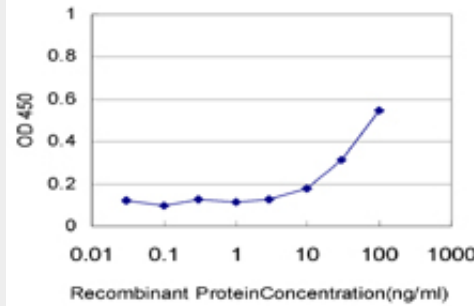
CFL1 monoclonal antibody (M04), clone 1A1. Western Blot analysis of CFL1 expression in Raw 264.7((Cat # AT1506a)



CFL1 monoclonal antibody (M04), clone 1A1. Western Blot analysis of CFL1 expression in NIH/3T3((Cat # AT1506a)



Immunoperoxidase of monoclonal antibody to CFL1 on formalin-fixed paraffin-embedded human breast cancer. [antibody concentration 1.5 ug/ml]



Detection limit for recombinant GST tagged CFL1 is approximately 10ng/ml as a capture antibody.

CFL1 Antibody (monoclonal) (M04) - Background

Cofilin is a widely distributed intracellular actin-modulating protein that binds and depolymerizes filamentous F-actin and inhibits the polymerization of monomeric G-actin in a pH-dependent manner. It is involved in the translocation of actin-cofilin complex from cytoplasm to nucleus.

CFL1 Antibody (monoclonal) (M04) - References

1.Determination of urine cofilin-1 level in acute kidney injury using a high-throughput localized surface plasmon-coupled fluorescence biosensor.Chang YF, Chao CH, Lin LY, Tsai CH, Chou C, Lee YJJ *Biomed Opt.* 2014 Jan;19(1):11004. doi: 10.1117/1.JBO.19.1.011004.2.Identification of phosphorylated serine-15 and -82 residues of HSPB1 in 5-fluorouracil- resistant colorectal cancer cells by proteomics.Sakai A, Otani M, Miyamoto A, Yoshida H, Furuya E, Tanigawa N.*Journal of Proteomics* (2011), doi: 10.1016/j.jprot.2011.09.0233.Overexpression of cofilin 1 can predict progression-free survival in patients with epithelial ovarian cancer receiving standard therapy.Nishimura S, Tsuda H, Kataoka F, Arai T, Nomura H, Chiyoda T, Susumu N, Nishio K, Aoki D.*Hum Pathol.* 2011 Jan 13. [Epub ahead of print]