

CENPJ Antibody (monoclonal) (M01)**Mouse monoclonal antibody raised against a partial recombinant CENPJ.****Catalog # AT1494a****Specification**

CENPJ Antibody (monoclonal) (M01) - Product Information

Application	WB, IHC, E
Primary Accession	Q9HC77
Other Accession	NM_018451
Reactivity	Human
Host	mouse
Clonality	Monoclonal
Isotype	IgG2a Kappa
Calculated MW	153000

CENPJ Antibody (monoclonal) (M01) - Additional Information**Gene ID** 55835**Other Names**

Centromere protein J, CENP-J, Centrosomal P41-associated protein, LAG-3-associated protein, LYST-interacting protein 1, CENPJ, CPAP, LAP, LIP1

Target/Specificity

CENPJ (NP_060921, 979 a.a. ~ 1088 a.a) partial recombinant protein with GST tag. MW of the GST tag alone is 26 KDa.

Dilution

WB~~1:500~1000

Format

Clear, colorless solution in phosphate buffered saline, pH 7.2 .

Storage

Store at -20°C or lower. Aliquot to avoid repeated freezing and thawing.

Precautions

CENPJ Antibody (monoclonal) (M01) is for research use only and not for use in diagnostic or therapeutic procedures.

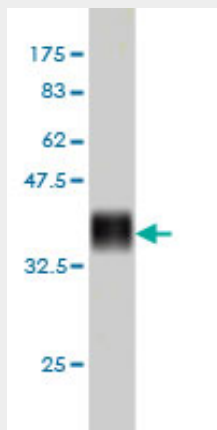
CENPJ Antibody (monoclonal) (M01) - Protocols

Provided below are standard protocols that you may find useful for product applications.

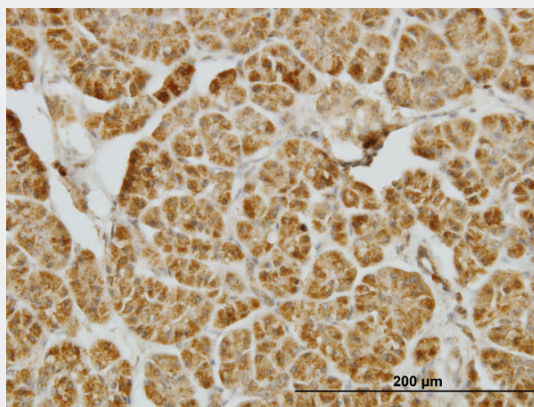
- [Western Blot](#)
- [Blocking Peptides](#)
- [Dot Blot](#)

- [Immunohistochemistry](#)
- [Immunofluorescence](#)
- [Immunoprecipitation](#)
- [Flow Cytometry](#)
- [Cell Culture](#)

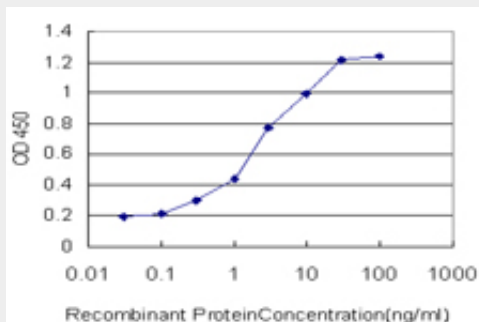
CENPJ Antibody (monoclonal) (M01) - Images



Antibody Reactive Against Recombinant Protein. Western Blot detection against Immunogen (37.84 kDa) .



Immunoperoxidase of monoclonal antibody to CENPJ on formalin-fixed paraffin-embedded human pancreas. [antibody concentration 1.5 ug/ml]



Detection limit for recombinant GST tagged CENPJ is approximately 0.03ng/ml as a capture antibody.

CENPJ Antibody (monoclonal) (M01) - Background

This gene encodes a protein that belongs to the centromere protein family. During cell division, this protein plays a structural role in the maintenance of centrosome integrity and normal spindle morphology, and it is involved in microtubule disassembly at the centrosome. This protein can function as a transcriptional coactivator in the Stat5 signaling pathway, and also as a coactivator of NF-kappaB-mediated transcription, likely via its interaction with the coactivator p300/CREB-binding protein. Mutations in this gene are associated with primary autosomal recessive microcephaly, a disorder characterized by severely reduced brain size and mental retardation.

CENPJ Antibody (monoclonal) (M01) - References

PLK2 phosphorylation is critical for CPAP function in procentriole formation during the centrosome cycle. Chang J, et al. EMBO J, 2010 Jul 21. PMID 20531387. Novel CENPJ mutation causes Seckel syndrome. Al-Dosari MS, et al. J Med Genet, 2010 Jun. PMID 20522431. Sex-dependent association of common variants of microcephaly genes with brain structure. Rimol LM, et al. Proc Natl Acad Sci U S A, 2010 Jan 5. PMID 20080800. Dimerization of CPAP orchestrates centrosome cohesion plasticity. Zhao L, et al. J Biol Chem, 2010 Jan 22. PMID 19889632. CPAP is a cell-cycle regulated protein that controls centriole length. Tang CJ, et al. Nat Cell Biol, 2009 Jul. PMID 19503075.