

## **CEBPE Antibody (monoclonal) (M01)**

Mouse monoclonal antibody raised against a full length recombinant CEBPE.

Catalog # AT1490a

### **Specification**

---

#### **CEBPE Antibody (monoclonal) (M01) - Product Information**

Application	WB
Primary Accession	<a href="#">Q15744</a>
Other Accession	<a href="#">BC035797</a>
Reactivity	Human
Host	mouse
Clonality	Monoclonal
Isotype	IgG2a Kappa
Calculated MW	30603

#### **CEBPE Antibody (monoclonal) (M01) - Additional Information**

**Gene ID** 1053

##### **Other Names**

CCAAT/enhancer-binding protein epsilon, C/EBP epsilon, CEBPE

##### **Target/Specificity**

CEBPE (AAH35797.2, 1 a.a. ~ 281 a.a) full-length recombinant protein with GST tag. MW of the GST tag alone is 26 KDa.

##### **Dilution**

WB~~1:500~1000

##### **Format**

Clear, colorless solution in phosphate buffered saline, pH 7.2 .

##### **Storage**

Store at -20°C or lower. Aliquot to avoid repeated freezing and thawing.

##### **Precautions**

CEBPE Antibody (monoclonal) (M01) is for research use only and not for use in diagnostic or therapeutic procedures.

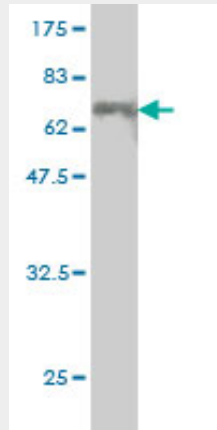
#### **CEBPE Antibody (monoclonal) (M01) - Protocols**

Provided below are standard protocols that you may find useful for product applications.

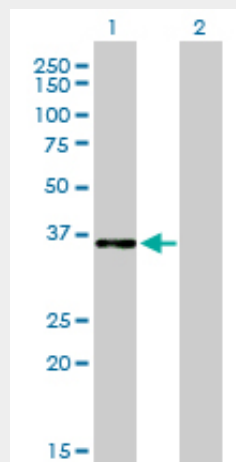
- [Western Blot](#)
- [Blocking Peptides](#)
- [Dot Blot](#)
- [Immunohistochemistry](#)

- [Immunofluorescence](#)
- [Immunoprecipitation](#)
- [Flow Cytometry](#)
- [Cell Culture](#)

### CEBPE Antibody (monoclonal) (M01) - Images

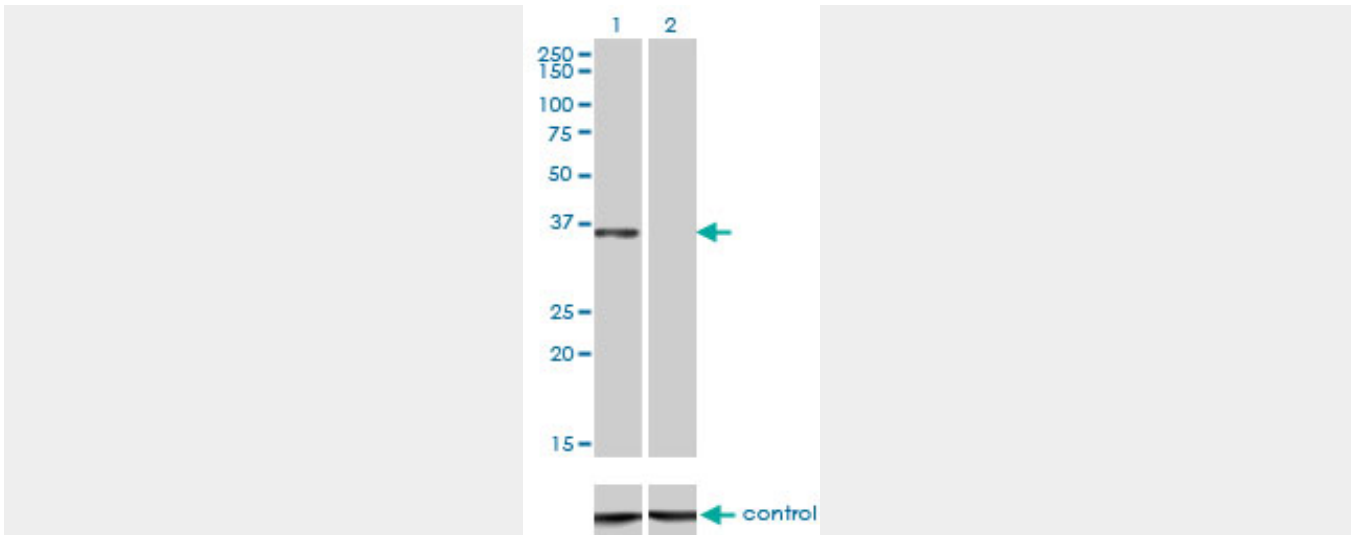


Antibody Reactive Against Recombinant Protein. Western Blot detection against Immunogen (56.65 KDa) .



Western Blot analysis of CEBPE expression in transfected 293T cell line by CEBPE monoclonal antibody (M01), clone 7A4.

Lane 1: CEBPE transfected lysate(30.6 KDa).  
Lane 2: Non-transfected lysate.



Western blot analysis of CEBPE over-expressed 293 cell line, cotransfected with CEBPE Validated Chimera RNAi ( Cat # AT1490a )

### **CEBPE Antibody (monoclonal) (M01) - Background**

The protein encoded by this gene is a bZIP transcription factor which can bind as a homodimer to certain DNA regulatory regions. It can also form heterodimers with the related protein CEBP-delta. The encoded protein may be essential for terminal differentiation and functional maturation of committed granulocyte progenitor cells. Mutations in this gene have been associated with Specific Granule Deficiency, a rare congenital disorder. Multiple variants of this gene have been described, but the full-length nature of only one has been determined.

### **CEBPE Antibody (monoclonal) (M01) - References**

Verification of the susceptibility loci on 7p12.2, 10q21.2, and 14q11.2 in precursor B-cell acute lymphoblastic leukemia of childhood. Prasad RB, et al. *Blood*, 2010 Mar 4. PMID 20042726. Loci on 7p12.2, 10q21.2 and 14q11.2 are associated with risk of childhood acute lymphoblastic leukemia. Papaemmanuil E, et al. *Nat Genet*, 2009 Sep. PMID 19684604. Inflammatory cytokine production by human neutrophils involves C/EBP transcription factors. Cloutier A, et al. *J Immunol*, 2009 Jan 1. PMID 19109189. Human C/EBP-epsilon activator and repressor isoforms differentially reprogram myeloid lineage commitment and differentiation. Bedi R, et al. *Blood*, 2009 Jan 8. PMID 18832658. C/EBPalpha and C/EBPvarepsilon induce the monocytic differentiation of myelomonocytic cells with the MLL-chimeric fusion gene. Matsushita H, et al. *Oncogene*, 2008 Dec 4. PMID 18776924.