

## **CDKN1B Antibody (monoclonal) (M01)**

Mouse monoclonal antibody raised against a full length recombinant CDKN1B.

Catalog # AT1481a

### **Specification**

---

#### **CDKN1B Antibody (monoclonal) (M01) - Product Information**

Application	IF, WB, IHC, E
Primary Accession	<a href="#">P46527</a>
Other Accession	<a href="#">BC001971</a>
Reactivity	Human
Host	mouse
Clonality	Monoclonal
Isotype	IgG1 kappa
Calculated MW	22073

#### **CDKN1B Antibody (monoclonal) (M01) - Additional Information**

**Gene ID** 1027

##### **Other Names**

Cyclin-dependent kinase inhibitor 1B, Cyclin-dependent kinase inhibitor p27, p27Kip1, CDKN1B, KIP1

##### **Target/Specificity**

CDKN1B (AAH01971, 1 a.a. ~ 198 a.a) full-length recombinant protein with GST tag. MW of the GST tag alone is 26 KDa.

##### **Dilution**

WB~~1:500~1000

##### **Format**

Clear, colorless solution in phosphate buffered saline, pH 7.2 .

##### **Storage**

Store at -20°C or lower. Aliquot to avoid repeated freezing and thawing.

##### **Precautions**

CDKN1B Antibody (monoclonal) (M01) is for research use only and not for use in diagnostic or therapeutic procedures.

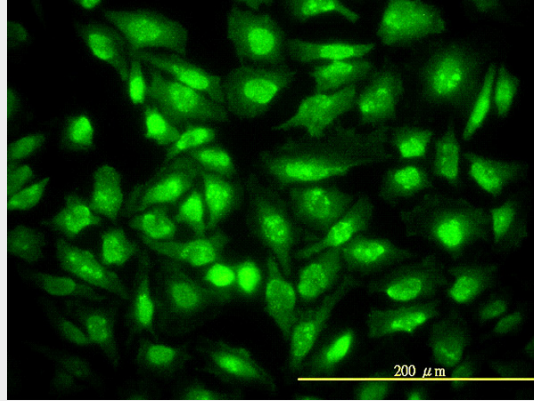
#### **CDKN1B Antibody (monoclonal) (M01) - Protocols**

Provided below are standard protocols that you may find useful for product applications.

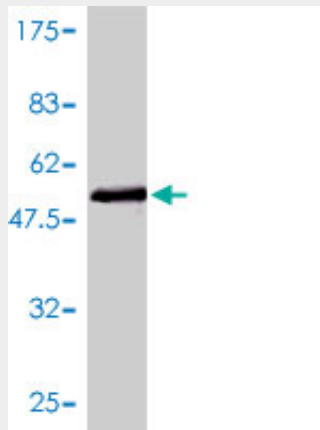
- [Western Blot](#)
- [Blocking Peptides](#)
- [Dot Blot](#)

- [Immunohistochemistry](#)
- [Immunofluorescence](#)
- [Immunoprecipitation](#)
- [Flow Cytometry](#)
- [Cell Culture](#)

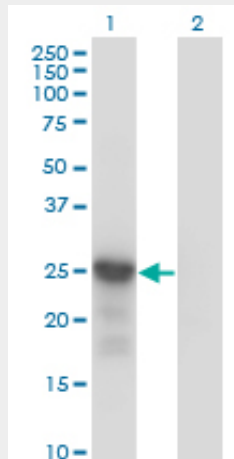
### CDKN1B Antibody (monoclonal) (M01) - Images



Immunofluorescence of monoclonal antibody to CDKN1B on HeLa cell. [antibody concentration 10 ug/ml]

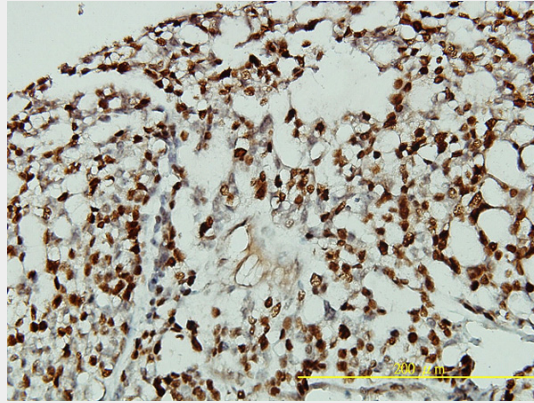


Antibody Reactive Against Recombinant Protein. Western Blot detection against Immunogen (47.52 KDa) .

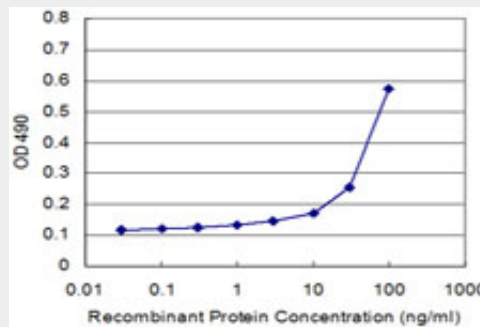


Western Blot analysis of CDKN1B expression in transfected 293T cell line by CDKN1B monoclonal antibody (M01), clone 4B4-E6.

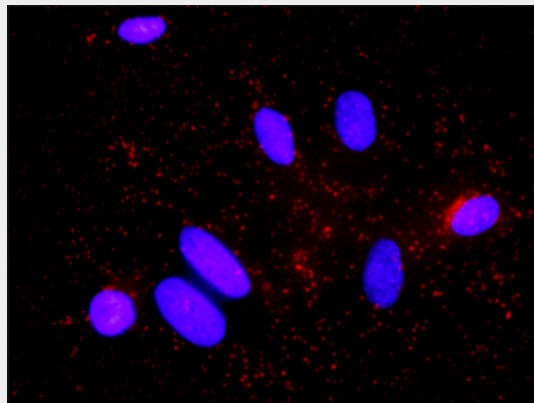
Lane 1: CDKN1B transfected lysate(22.1 KDa).  
 Lane 2: Non-transfected lysate.



Immunoperoxidase of monoclonal antibody to CDKN1B on formalin-fixed paraffin-embedded human ovary, clear cell carcinoma tissue. [antibody concentration 5 ug/ml]



Detection limit for recombinant GST tagged CDKN1B is 10 ng/ml as a capture antibody.



Proximity Ligation Analysis of protein-protein interactions between AKT1 and CDKN1B HeLa cells were stained with anti-AKT1 rabbit purified polyclonal 1:1200 and anti-CDKN1B mouse monoclonal antibody 1:50. Each red dot represents the detection of protein-protein interaction complex, and nuclei were counterstained with DAPI (blue).

### CDKN1B Antibody (monoclonal) (M01) - Background

This gene encodes a cyclin-dependent kinase inhibitor, which shares a limited similarity with CDK inhibitor CDKN1A/p21. The encoded protein binds to and prevents the activation of cyclin E-CDK2 or

cyclin D-CDK4 complexes, and thus controls the cell cycle progression at G1. The degradation of this protein, which is triggered by its CDK dependent phosphorylation and subsequent ubiquitination by SCF complexes, is required for the cellular transition from quiescence to the proliferative state.

#### **CDKN1B Antibody (monoclonal) (M01) - References**

JAB1 expression is associated with inverse expression of p27(kip1) in hepatocellular carcinoma. Qin J, et al. *Hepatogastroenterology*, 2010 May-Jun. PMID 20698225. CCND1 and CDKN1B polymorphisms and risk of breast cancer. Canbay E, et al. *Anticancer Res*, 2010 Jul. PMID 20683061. Variation at the NFATC2 Locus Increases the Risk of Thiazolidinedione-Induced Edema in the Diabetes REduction Assessment with ramipril and rosiglitazone Medication (DREAM) Study. Bailey SD, et al. *Diabetes Care*, 2010 Jul 13. PMID 20628086. Analysis of cyclin-dependent kinase inhibitor 1B mutation in Han Chinese women with premature ovarian failure. Wang B, et al. *Reprod Biomed Online*, 2010 Aug. PMID 20615757. The MENX syndrome and p27: relationships with multiple endocrine neoplasia. Molatore S, et al. *Prog Brain Res*, 2010. PMID 20541671.