

## **CDK6 Antibody (monoclonal) (M01)**

Mouse monoclonal antibody raised against a partial recombinant CDK6.

Catalog # AT1478a

### **Specification**

---

#### **CDK6 Antibody (monoclonal) (M01) - Product Information**

Application	IF, WB, IHC
Primary Accession	<a href="#">Q00534</a>
Other Accession	<a href="#">NM_001259</a>
Reactivity	Human, Rat
Host	mouse
Clonality	Monoclonal
Isotype	IgG1 Kappa
Calculated MW	36938

#### **CDK6 Antibody (monoclonal) (M01) - Additional Information**

**Gene ID** 1021

##### **Other Names**

Cyclin-dependent kinase 6, Cell division protein kinase 6, Serine/threonine-protein kinase PLSTIRE, CDK6, CDKN6

##### **Target/Specificity**

CDK6 (NP\_001250, 3 a.a. ~ 99 a.a) partial recombinant protein with GST tag. MW of the GST tag alone is 26 KDa.

##### **Dilution**

WB~~1:500~1000

##### **Format**

Clear, colorless solution in phosphate buffered saline, pH 7.2 .

##### **Storage**

Store at -20°C or lower. Aliquot to avoid repeated freezing and thawing.

##### **Precautions**

CDK6 Antibody (monoclonal) (M01) is for research use only and not for use in diagnostic or therapeutic procedures.

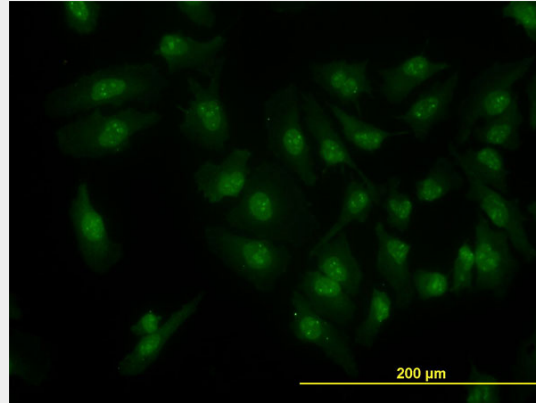
#### **CDK6 Antibody (monoclonal) (M01) - Protocols**

Provided below are standard protocols that you may find useful for product applications.

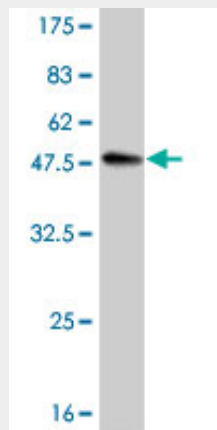
- [Western Blot](#)
- [Blocking Peptides](#)
- [Dot Blot](#)

- [Immunohistochemistry](#)
- [Immunofluorescence](#)
- [Immunoprecipitation](#)
- [Flow Cytometry](#)
- [Cell Culture](#)

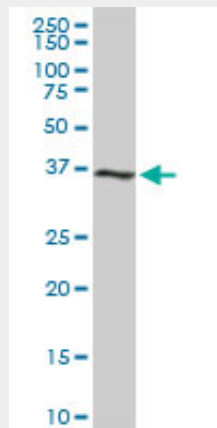
### CDK6 Antibody (monoclonal) (M01) - Images



Immunofluorescence of monoclonal antibody to CDK6 on HeLa cell. [antibody concentration 10 ug/ml]

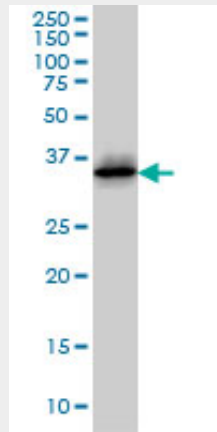


Antibody Reactive Against Recombinant Protein. Western Blot detection against Immunogen (36.41 KDa) .

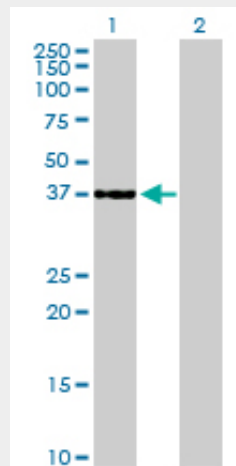


CDK6 monoclonal antibody (M01), clone 8H4. Western Blot analysis of CDK6 expression in PC-12 (

(Cat # AT1478a )



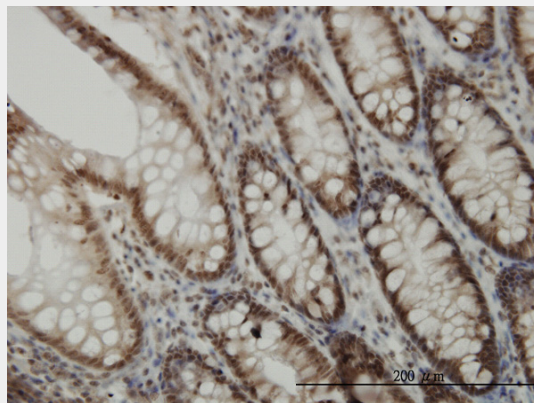
CDK6 monoclonal antibody (M01), clone 8H4 Western Blot analysis of CDK6 expression in Jurkat (Cat # AT1478a )



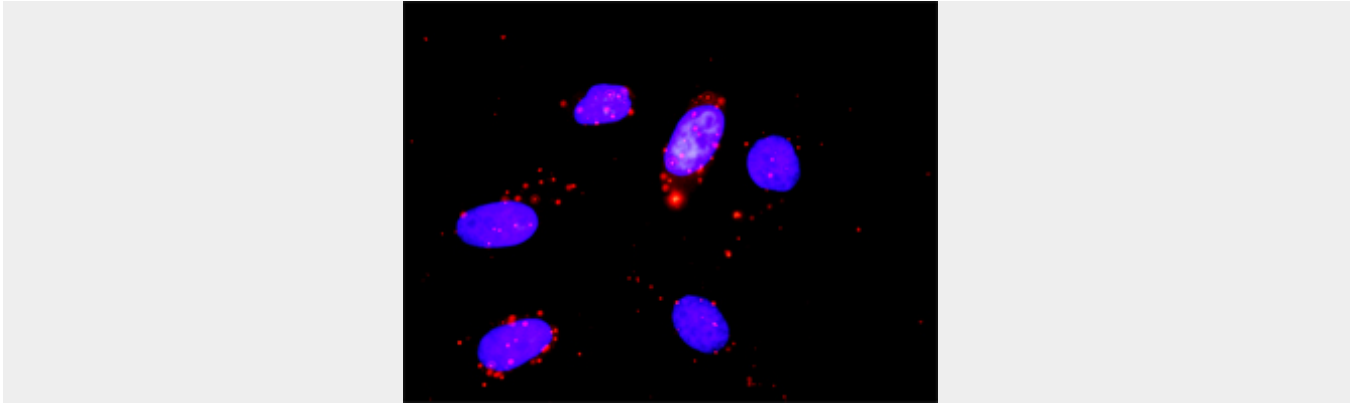
Western Blot analysis of CDK6 expression in transfected 293T cell line by CDK6 monoclonal antibody (M01), clone 8H4.

Lane 1: CDK6 transfected lysate(36.9 KDa).

Lane 2: Non-transfected lysate.



Immunoperoxidase of monoclonal antibody to CDK6 on formalin-fixed paraffin-embedded human colon. [antibody concentration 3 ug/ml]



Proximity Ligation Analysis of protein-protein interactions between CDK2 and CDK6 HeLa cells were stained with anti-CDK2 rabbit purified polyclonal 1:1200 and anti-CDK6 mouse monoclonal antibody 1:50. Each red dot represents the detection of protein-protein interaction complex, and nuclei were counterstained with DAPI (blue).

### **CDK6 Antibody (monoclonal) (M01) - Background**

The protein encoded by this gene is a member of the cyclin-dependent protein kinase (CDK) family. CDK family members are highly similar to the gene products of *Saccharomyces cerevisiae* cdc28, and *Schizosaccharomyces pombe* cdc2, and are known to be important regulators of cell cycle progression. This kinase is a catalytic subunit of the protein kinase complex that is important for cell cycle G1 phase progression and G1/S transition. The activity of this kinase first appears in mid-G1 phase, which is controlled by the regulatory subunits including D-type cyclins and members of INK4 family of CDK inhibitors. This kinase, as well as CDK4, has been shown to phosphorylate, and thus regulate the activity of, tumor suppressor protein Rb. Expression of this gene is up-regulated in some types of cancer. Multiple alternatively spliced variants, encoding the same protein, have been identified.

### **CDK6 Antibody (monoclonal) (M01) - References**

1. APRIL promotes cell-cycle progression in primary multiple myeloma cells: influence of D-type cyclin group and translocation status. Quinn J, Glassford J, Percy L, Munson P, Marafioti T, Rodriguez-Justo M, Yong K. *Blood*. 2011 Jan 20;117(3):890-901. Epub 2010 Aug 13.