

CDCA3 Antibody (monoclonal) (M10)

Mouse monoclonal antibody raised against a full length recombinant CDCA3.

Catalog # AT1469a

Specification

CDCA3 Antibody (monoclonal) (M10) - Product Information

Application	WB, E
Primary Accession	O99618
Other Accession	BC002551
Reactivity	Human
Host	mouse
Clonality	Monoclonal
Isotype	IgG2b Kappa
Calculated MW	28998

CDCA3 Antibody (monoclonal) (M10) - Additional Information

Gene ID 83461

Other Names

Cell division cycle-associated protein 3, Gene-rich cluster protein C8, Trigger of mitotic entry protein 1, TOME-1, CDCA3, C8, GRCC8, TOME1

Target/Specificity

CDCA3 (AAH02551, 1 a.a. ~ 268 a.a) full-length recombinant protein with GST tag. MW of the GST tag alone is 26 KDa.

Dilution

WB~~1:500~1000

Format

Clear, colorless solution in phosphate buffered saline, pH 7.2 .

Storage

Store at -20°C or lower. Aliquot to avoid repeated freezing and thawing.

Precautions

CDCA3 Antibody (monoclonal) (M10) is for research use only and not for use in diagnostic or therapeutic procedures.

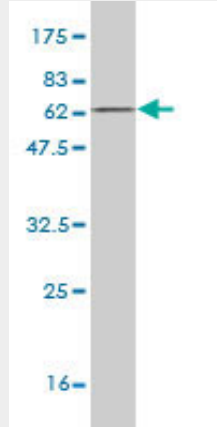
CDCA3 Antibody (monoclonal) (M10) - Protocols

Provided below are standard protocols that you may find useful for product applications.

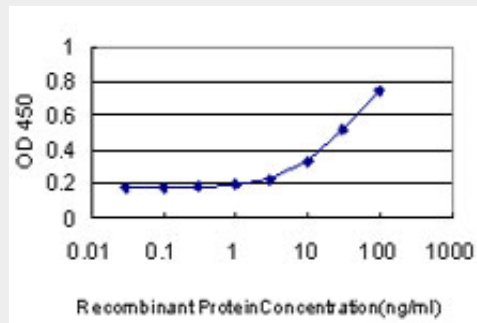
- [Western Blot](#)
- [Blocking Peptides](#)
- [Dot Blot](#)

- [Immunohistochemistry](#)
- [Immunofluorescence](#)
- [Immunoprecipitation](#)
- [Flow Cytometry](#)
- [Cell Culture](#)

CDCA3 Antibody (monoclonal) (M10) - Images



Antibody Reactive Against Recombinant Protein. Western Blot detection against Immunogen (55.22 KDa) .



Detection limit for recombinant GST tagged CDCA3 is approximately 3ng/ml as a capture antibody.

CDCA3 Antibody (monoclonal) (M10) - References

Identification of type 2 diabetes-associated combination of SNPs using support vector machine. Ban HJ, et al. BMC Genet, 2010 Apr 23. PMID 20416077. Towards a proteome-scale map of the human protein-protein interaction network. Rual JF, et al. Nature, 2005 Oct 20. PMID 16189514. Cell-cycle-dependent regulation of the human and mouse Tome-1 promoters. Yoshida K. FEBS Lett, 2005 Feb 28. PMID 15733861. Complete sequencing and characterization of 21,243 full-length human cDNAs. Ota T, et al. Nat Genet, 2004 Jan. PMID 14702039. Tome-1, a trigger of mitotic entry, is degraded during G1 via the APC. Ayad NG, et al. Cell, 2003 Apr 4. PMID 12679038.