

## **CDC45L Antibody (monoclonal) (M02)**

Mouse monoclonal antibody raised against a partial recombinant CDC45L.

Catalog # AT1468a

### **Specification**

---

#### **CDC45L Antibody (monoclonal) (M02) - Product Information**

Application	WB, E
Primary Accession	<a href="#">O75419</a>
Other Accession	<a href="#">NM_003504</a>
Reactivity	Human
Host	mouse
Clonality	Monoclonal
Isotype	IgG2a Kappa
Calculated MW	65569

#### **CDC45L Antibody (monoclonal) (M02) - Additional Information**

**Gene ID** 8318

#### **Other Names**

Cell division control protein 45 homolog, PORC-PI-1, CDC45, CDC45L, CDC45L2

#### **Target/Specificity**

CDC45L (NP\_003495, 477 a.a. ~ 566 a.a) partial recombinant protein with GST tag. MW of the GST tag alone is 26 KDa.

#### **Dilution**

WB ~ 1:500 ~ 1000

#### **Format**

Clear, colorless solution in phosphate buffered saline, pH 7.2 .

#### **Storage**

Store at -20°C or lower. Aliquot to avoid repeated freezing and thawing.

#### **Precautions**

CDC45L Antibody (monoclonal) (M02) is for research use only and not for use in diagnostic or therapeutic procedures.

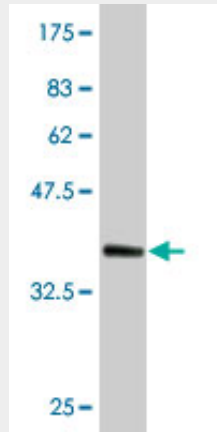
#### **CDC45L Antibody (monoclonal) (M02) - Protocols**

Provided below are standard protocols that you may find useful for product applications.

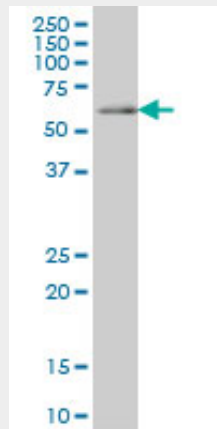
- [Western Blot](#)
- [Blocking Peptides](#)
- [Dot Blot](#)
- [Immunohistochemistry](#)

- [Immunofluorescence](#)
- [Immunoprecipitation](#)
- [Flow Cytometry](#)
- [Cell Culture](#)

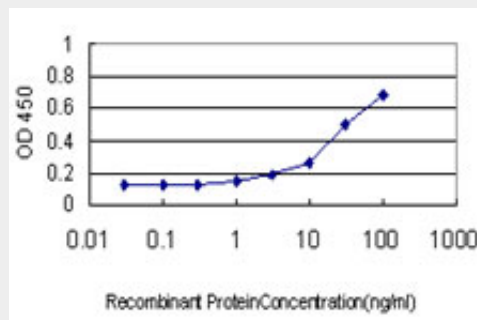
**CDC45L Antibody (monoclonal) (M02) - Images**



Antibody Reactive Against Recombinant Protein. Western Blot detection against Immunogen (35.64 kDa) .



CDC45L monoclonal antibody (M02), clone 4C2 Western Blot analysis of CDC45L expression in Jurkat ( (Cat # AT1468a )



Detection limit for recombinant GST tagged CDC45L is approximately 0.3ng/ml as a capture antibody.

**CDC45L Antibody (monoclonal) (M02) - Background**

The protein encoded by this gene was identified by its strong similarity with *Saccharomyces cerevisiae* Cdc45, an essential protein required to the initiation of DNA replication. Cdc45 is a member of the highly conserved multiprotein complex including Cdc6/Cdc18, the minichromosome maintenance proteins (MCMs) and DNA polymerase, which is important for early steps of DNA replication in eukaryotes. This protein has been shown to interact with MCM7 and DNA polymerase alpha. Studies of the similar gene in *Xenopus* suggested that this protein play a pivotal role in the loading of DNA polymerase alpha onto chromatin. Multiple alternatively spliced transcript variants encoding different isoforms have been found for this gene.

### **CDC45L Antibody (monoclonal) (M02) - References**

Personalized smoking cessation: interactions between nicotine dose, dependence and quit-success genotype score. Rose JE, et al. *Mol Med*, 2010 Jul-Aug. PMID 20379614. Human Timeless and Tipin stabilize replication forks and facilitate sister-chromatid cohesion. Leman AR, et al. *J Cell Sci*, 2010 Mar 1. PMID 20124417. The DNA unwinding element binding protein DUE-B interacts with Cdc45 in preinitiation complex formation. Chowdhury A, et al. *Mol Cell Biol*, 2010 Mar. PMID 20065034. Assembly of the Cdc45-Mcm2-7-GINS complex in human cells requires the Ctf4/And-1, RecQL4, and Mcm10 proteins. Im JS, et al. *Proc Natl Acad Sci U S A*, 2009 Sep 15. PMID 19805216. Genetic variants in apoptosis and immunoregulation-related genes are associated with risk of chronic lymphocytic leukemia. Enjuanes A, et al. *Cancer Res*, 2008 Dec 15. PMID 19074885.