

CDC37 Antibody (monoclonal) (M01)

Mouse monoclonal antibody raised against a full length recombinant CDC37.

Catalog # AT1461a

Specification

CDC37 Antibody (monoclonal) (M01) - Product Information

Application	IF, WB, IHC
Primary Accession	O16543
Other Accession	BC008793
Reactivity	Human
Host	mouse
Clonality	Monoclonal
Isotype	IgG1 kappa
Calculated MW	44468

CDC37 Antibody (monoclonal) (M01) - Additional Information

Gene ID 11140

Other Names

Hsp90 co-chaperone Cdc37, Hsp90 chaperone protein kinase-targeting subunit, p50Cdc37, Hsp90 co-chaperone Cdc37, N-terminally processed, CDC37, CDC37A

Target/Specificity

CDC37 (AAH08793.1, 1 a.a. ~ 378 a.a) full-length recombinant protein with GST tag. MW of the GST tag alone is 26 KDa.

Dilution

WB~~1:500~1000

Format

Clear, colorless solution in phosphate buffered saline, pH 7.2 .

Storage

Store at -20°C or lower. Aliquot to avoid repeated freezing and thawing.

Precautions

CDC37 Antibody (monoclonal) (M01) is for research use only and not for use in diagnostic or therapeutic procedures.

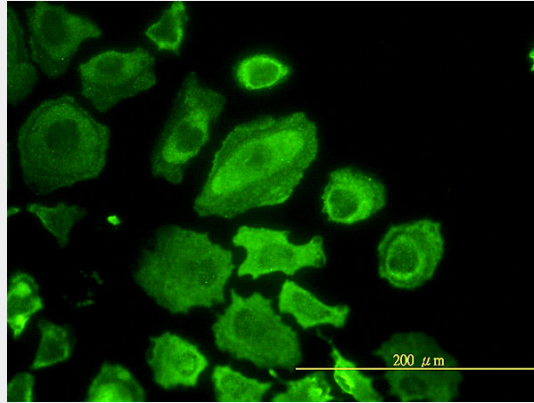
CDC37 Antibody (monoclonal) (M01) - Protocols

Provided below are standard protocols that you may find useful for product applications.

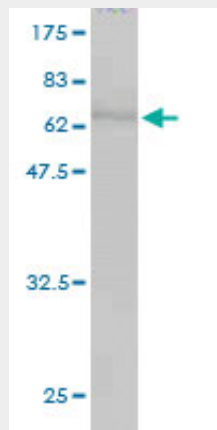
- [Western Blot](#)
- [Blocking Peptides](#)
- [Dot Blot](#)

- [Immunohistochemistry](#)
- [Immunofluorescence](#)
- [Immunoprecipitation](#)
- [Flow Cytometry](#)
- [Cell Culture](#)

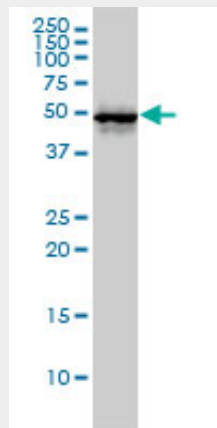
CDC37 Antibody (monoclonal) (M01) - Images



Immunofluorescence of monoclonal antibody to CDC37 on HeLa cell. [antibody concentration 10 ug/ml]

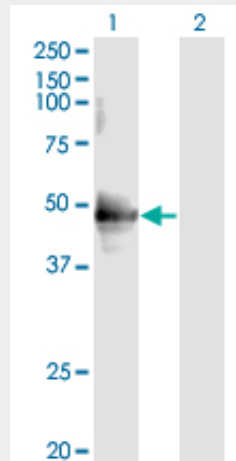


Antibody Reactive Against Recombinant Protein. Western Blot detection against Immunogen (67.32 KDa) .



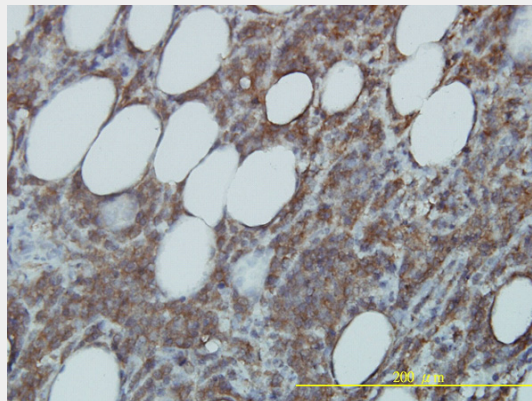
CDC37 monoclonal antibody (M01), clone 3C7. Western Blot analysis of CDC37 expression in

HL-60 ((Cat # AT1461a)



Western Blot analysis of CDC37 expression in transfected 293T cell line by CDC37 monoclonal antibody (M01), clone 3C7.

Lane 1: CDC37 transfected lysate(44.5 kDa).
Lane 2: Non-transfected lysate.



Immunoperoxidase of monoclonal antibody to CDC37 on formalin-fixed paraffin-embedded human malignant lymphoma, diffuse large B tissue. [antibody concentration 1 ug/ml]

CDC37 Antibody (monoclonal) (M01) - Background

The protein encoded by this gene is highly similar to Cdc 37, a cell division cycle control protein of *Saccharomyces cerevisiae*. This protein is a molecular chaperone with specific function in cell signal transduction. It has been shown to form complex with Hsp90 and a variety of protein kinases including CDK4, CDK6, SRC, RAF-1, MOK, as well as eIF2 alpha kinases. It is thought to play a critical role in directing Hsp90 to its target kinases.

CDC37 Antibody (monoclonal) (M01) - References

Specific regulation of noncanonical p38alpha activation by Hsp90-Cdc37 chaperone complex in cardiomyocyte. Ota A, et al. *Circ Res*, 2010 Apr 30. PMID 20299663. Swe1Wee1-dependent tyrosine phosphorylation of Hsp90 regulates distinct facets of chaperone function. Mollapour M, et al. *Mol Cell*, 2010 Feb 12. PMID 20159553. Association of mitotic regulation pathway polymorphisms with pancreatic cancer risk and outcome. Couch FJ, et al. *Cancer Epidemiol Biomarkers Prev*, 2010 Jan. PMID 20056645. Characterization of celastrol to inhibit hsp90 and cdc37 interaction. Zhang T, et al. *J Biol Chem*, 2009 Dec 18. PMID 19858214. Defining the human deubiquitinating enzyme interaction

landscape. Sowa ME, et al. Cell, 2009 Jul 23. PMID 19615732.