

CDC25C Antibody (monoclonal) (M01)

Mouse monoclonal antibody raised against a partial recombinant CDC25C.

Catalog # AT1458a

Specification

CDC25C Antibody (monoclonal) (M01) - Product Information

Application	IP, WB, IHC, E
Primary Accession	P30307
Other Accession	BC019089
Reactivity	Human
Host	Mouse
Clonality	Monoclonal
Isotype	IgG1 Kappa
Calculated MW	53365

CDC25C Antibody (monoclonal) (M01) - Additional Information**Gene ID** 995**Other Names**

M-phase inducer phosphatase 3, Dual specificity phosphatase Cdc25C, CDC25C

Target/Specificity

CDC25C (AAH19089, 21 a.a. ~ 130 a.a) partial recombinant protein with GST tag. MW of the GST tag alone is 26 KDa.

Dilution

WB~~1:500~1000

Format

Clear, colorless solution in phosphate buffered saline, pH 7.2 .

Storage

Store at -20°C or lower. Aliquot to avoid repeated freezing and thawing.

Precautions

CDC25C Antibody (monoclonal) (M01) is for research use only and not for use in diagnostic or therapeutic procedures.

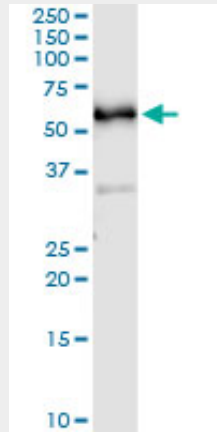
CDC25C Antibody (monoclonal) (M01) - Protocols

Provided below are standard protocols that you may find useful for product applications.

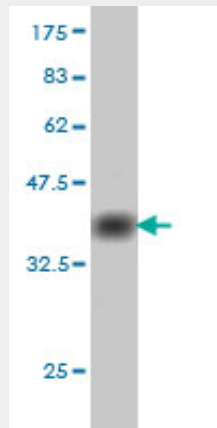
- [Western Blot](#)
- [Blocking Peptides](#)
- [Dot Blot](#)
- [Immunohistochemistry](#)

- [Immunofluorescence](#)
- [Immunoprecipitation](#)
- [Flow Cytometry](#)
- [Cell Culture](#)

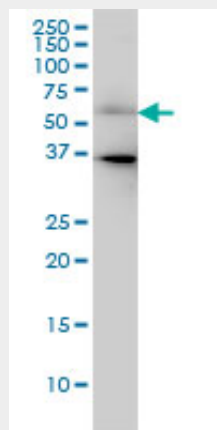
CDC25C Antibody (monoclonal) (M01) - Images



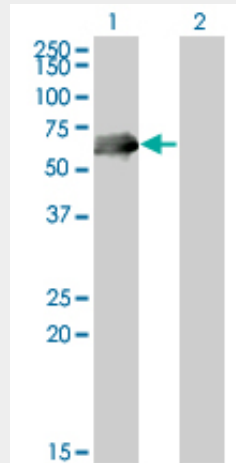
Immunoprecipitation of CDC25C transfected lysate using anti-CDC25C monoclonal antibody and Protein A Magnetic Bead ([U0007](#)), and immunoblotted with CDC25C MaxPab rabbit polyclonal antibody.



Antibody Reactive Against Recombinant Protein. Western Blot detection against Immunogen (37.73 KDa) .

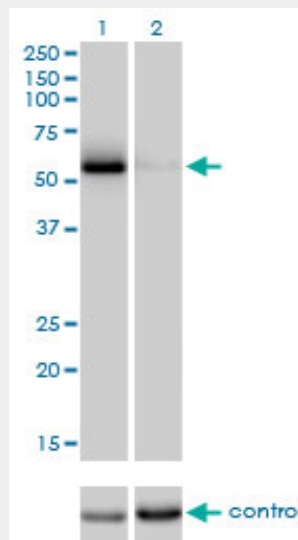


CDC25C monoclonal antibody (M01), clone 3B11 Western Blot analysis of CDC25C expression in HeLa ((Cat # AT1458a)

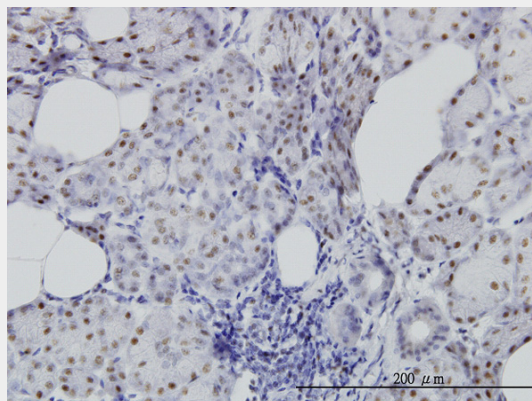


Western Blot analysis of CDC25C expression in transfected 293T cell line by CDC25C monoclonal antibody (M01), clone 3B11.

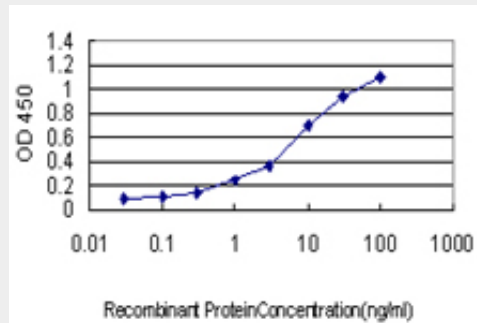
Lane 1: CDC25C transfected lysate(53.312 KDa).
Lane 2: Non-transfected lysate.



Western blot analysis of CDC25C over-expressed 293 cell line, cotransfected with CDC25C Validated Chimera RNAi ((Cat # AT1458a)



Immunoperoxidase of monoclonal antibody to CDC25C on formalin-fixed paraffin-embedded human salivary gland. [antibody concentration 6 ug/ml]



Detection limit for recombinant GST tagged CDC25C is approximately 0.1ng/ml as a capture antibody.

CDC25C Antibody (monoclonal) (M01) - Background

This gene is highly conserved during evolution and it plays a key role in the regulation of cell division. The encoded protein is a tyrosine phosphatase and belongs to the Cdc25 phosphatase family. It directs dephosphorylation of cyclin B-bound CDC2 and triggers entry into mitosis. It is also thought to suppress p53-induced growth arrest. Multiple alternatively spliced transcript variants of this gene have been described, however, the full-length nature of many of them is not known.

CDC25C Antibody (monoclonal) (M01) - References

Centrosome-related genes, genetic variation, and risk of breast cancer. Olson JE, et al. *Breast Cancer Res Treat*, 2010 May 28. PMID 20508983. Overexpression of CDC25B, CDC25C and phospho-CDC25C (Ser216) in vulvar squamous cell carcinomas are associated with malignant features and aggressive cancer phenotypes. Wang Z, et al. *BMC Cancer*, 2010 May 25. PMID 20500813. A Large-scale genetic association study of esophageal adenocarcinoma risk. Liu CY, et al. *Carcinogenesis*, 2010 Jul. PMID 20453000. Cdc25 phosphatases are required for timely assembly of CDK1-cyclin B at the G2/M transition. Timofeev O, et al. *J Biol Chem*, 2010 May 28. PMID 20360007. Adventitious arsenate reductase activity of the catalytic domain of the human Cdc25B and Cdc25C phosphatases. Bhattacharjee H, et al. *Biochemistry*, 2010 Feb 2. PMID 20025242.