

## CD40LG Antibody (monoclonal) (M01)

Mouse monoclonal antibody raised against a partial recombinant CD40LG.

Catalog # AT1439a

### Specification

---

#### CD40LG Antibody (monoclonal) (M01) - Product Information

Application	WB, E
Primary Accession	<a href="#">P29965</a>
Other Accession	<a href="#">NM_000074</a>
Reactivity	Human
Host	mouse
Clonality	Monoclonal
Isotype	IgG2b Kappa
Calculated MW	29274

#### CD40LG Antibody (monoclonal) (M01) - Additional Information

Gene ID 959

##### Other Names

CD40 ligand, CD40-L, T-cell antigen Gp39, TNF-related activation protein, TRAP, Tumor necrosis factor ligand superfamily member 5, CD154, CD40 ligand, membrane form, CD40 ligand, soluble form, CD40LG, CD40L, TNFSF5, TRAP

##### Target/Specificity

CD40LG (NP\_000065, 101 a.a. ~ 203 a.a) partial recombinant protein with GST tag. MW of the GST tag alone is 26 KDa.

##### Dilution

WB~~1:500~1000

##### Format

Clear, colorless solution in phosphate buffered saline, pH 7.2 .

##### Storage

Store at -20°C or lower. Aliquot to avoid repeated freezing and thawing.

##### Precautions

CD40LG Antibody (monoclonal) (M01) is for research use only and not for use in diagnostic or therapeutic procedures.

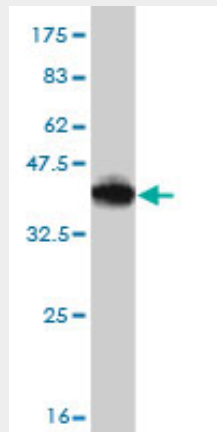
#### CD40LG Antibody (monoclonal) (M01) - Protocols

Provided below are standard protocols that you may find useful for product applications.

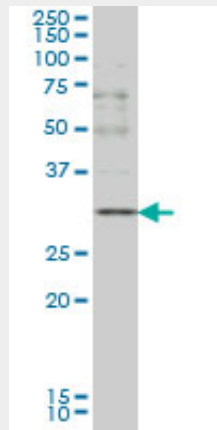
- [Western Blot](#)
- [Blocking Peptides](#)

- [Dot Blot](#)
- [Immunohistochemistry](#)
- [Immunofluorescence](#)
- [Immunoprecipitation](#)
- [Flow Cytometry](#)
- [Cell Culture](#)

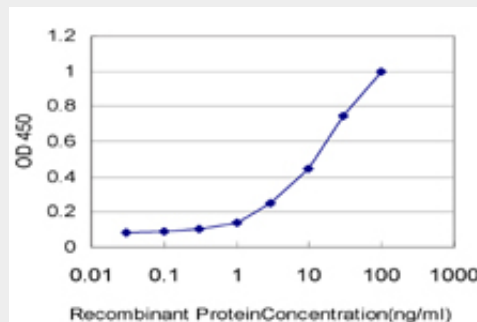
**CD40LG Antibody (monoclonal) (M01) - Images**



Antibody Reactive Against Recombinant Protein. Western Blot detection against Immunogen (37.07 KDa) .



CD40LG monoclonal antibody (M01), clone 2E2 Western Blot analysis of CD40LG expression in K-562 ( (Cat # AT1439a )



Detection limit for recombinant GST tagged CD40LG is approximately 0.3ng/ml as a capture antibody.

**CD40LG Antibody (monoclonal) (M01) - Background**

The protein encoded by this gene is expressed on the surface of T cells. It regulates B cell function by engaging CD40 on the B cell surface. A defect in this gene results in an inability to undergo immunoglobulin class switch and is associated with hyper-IgM syndrome.

**CD40LG Antibody (monoclonal) (M01) - References**

Anti-C1q antibodies, sCD40L, TWEAK and CD4/CD8 ratio in systemic lupus erythematosus and their relations to disease activity and renal involvement. ElGendi SS, et al. Egypt J Immunol, 2009. PMID 20726330. Variation at the NFATC2 Locus Increases the Risk of Thiazolidinedione-Induced Edema in the Diabetes REduction Assessment with ramipril and rosiglitazone Medication (DREAM) Study. Bailey SD, et al. Diabetes Care, 2010 Jul 13. PMID 20628086. Gene-gene interaction between CD40 and CD40L reduces bone mineral density and increases osteoporosis risk in women. Pineda B, et al. Osteoporos Int, 2010 Jun 25. PMID 20577873. Augmented antibody response with premature germinal center regression in CD40L transgenic mice. Kishi Y, et al. J Immunol, 2010 Jul 1. PMID 20505144. Constitutive CD40L expression on B cells prematurely terminates germinal center response and leads to augmented plasma cell production in T cell areas. Bolduc A, et al. J Immunol, 2010 Jul 1. PMID 20505142.