

CD3E Antibody (monoclonal) (M04)

Mouse monoclonal antibody raised against a full length recombinant CD3E.

Catalog # AT1437a

Specification

CD3E Antibody (monoclonal) (M04) - Product Information

Application	WB, E
Primary Accession	P07766
Other Accession	BC049847
Reactivity	Human
Host	mouse
Clonality	Monoclonal
Isotype	IgG2a Kappa
Calculated MW	23147

CD3E Antibody (monoclonal) (M04) - Additional Information

Gene ID 916

Other Names

T-cell surface glycoprotein CD3 epsilon chain, T-cell surface antigen T3/Leu-4 epsilon chain, CD3e, CD3E, T3E

Target/Specificity

CD3E (AAH49847.1, 23 a.a. ~ 207 a.a) full-length recombinant protein with GST tag. MW of the GST tag alone is 26 KDa.

Dilution

WB~~1:500~1000

Format

Clear, colorless solution in phosphate buffered saline, pH 7.2 .

Storage

Store at -20°C or lower. Aliquot to avoid repeated freezing and thawing.

Precautions

CD3E Antibody (monoclonal) (M04) is for research use only and not for use in diagnostic or therapeutic procedures.

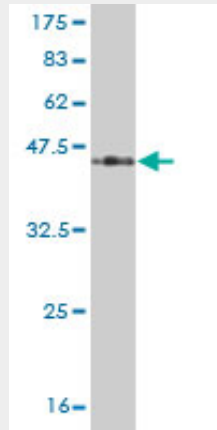
CD3E Antibody (monoclonal) (M04) - Protocols

Provided below are standard protocols that you may find useful for product applications.

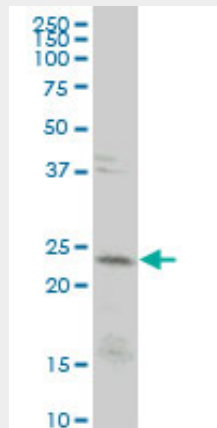
- [Western Blot](#)
- [Blocking Peptides](#)
- [Dot Blot](#)

- [Immunohistochemistry](#)
- [Immunofluorescence](#)
- [Immunoprecipitation](#)
- [Flow Cytometry](#)
- [Cell Culture](#)

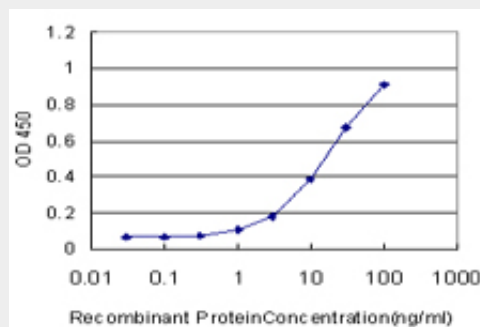
CD3E Antibody (monoclonal) (M04) - Images



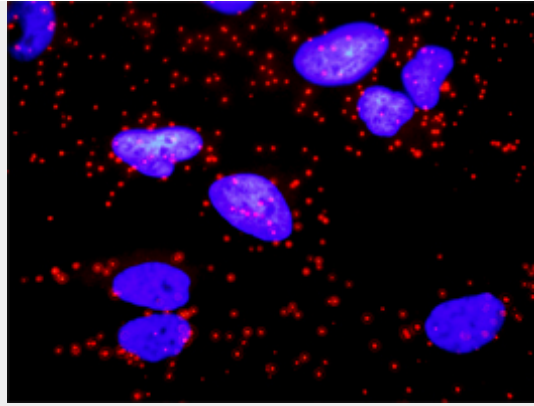
Antibody Reactive Against Recombinant Protein. Western Blot detection against Immunogen (46.09 KDa) .



CD3E monoclonal antibody (M04), clone 4C1 Western Blot analysis of CD3E expression in HeLa (Cat # AT1437a)



Detection limit for recombinant GST tagged CD3E is approximately 1ng/ml as a capture antibody.



Proximity Ligation Analysis of protein-protein interactions between CD247 and CD3E. HeLa cells were stained with anti-CD247 rabbit purified polyclonal 1:1200 and anti-CD3E mouse monoclonal antibody 1:50. Each red dot represents the detection of protein-protein interaction complex, and nuclei were counterstained with DAPI (blue).

CD3E Antibody (monoclonal) (M04) - Background

The protein encoded by this gene is the CD3-epsilon polypeptide, which together with CD3-gamma, -delta and -zeta, and the T-cell receptor alpha/beta and gamma/delta heterodimers, forms the T-cell receptor-CD3 complex. This complex plays an important role in coupling antigen recognition to several intracellular signal-transduction pathways. The genes encoding the epsilon, gamma and delta polypeptides are located in the same cluster on chromosome 11. The epsilon polypeptide plays an essential role in T-cell development. Defects in this gene cause immunodeficiency. This gene has also been linked to a susceptibility to type I diabetes in women.

CD3E Antibody (monoclonal) (M04) - References

Variation at the NFATC2 Locus Increases the Risk of Thiazolinedinedione-Induced Edema in the Diabetes REduction Assessment with ramipril and rosiglitazone Medication (DREAM) Study. Bailey SD, et al. *Diabetes Care*, 2010 Jul 13. PMID 20628086. Evaluation of 6 candidate genes on chromosome 11q23 for coeliac disease susceptibility: a case control study. Brophy K, et al. *BMC Med Genet*, 2010 May 17. PMID 20478055. New genetic associations detected in a host response study to hepatitis B vaccine. Davila S, et al. *Genes Immun*, 2010 Apr. PMID 20237496. Gene-centric association signals for lipids and apolipoproteins identified via the HumanCVD BeadChip. Talmud PJ, et al. *Am J Hum Genet*, 2009 Nov. PMID 19913121. In vitro preparation and characterization of the human CD3 epsilon epsilon homodimer and CD3 epsilon gamma and CD3 epsilon delta heterodimers. Su Z, et al. *Int J Mol Med*, 2009 Oct. PMID 19724882.