

## CD38 Antibody (monoclonal) (M02)

Mouse monoclonal antibody raised against a partial recombinant CD38.

Catalog # AT1436a

### Specification

---

#### CD38 Antibody (monoclonal) (M02) - Product Information

Application	IF, WB, E
Primary Accession	<a href="#">P28907</a>
Other Accession	<a href="#">BC007964</a>
Reactivity	Human
Host	mouse
Clonality	Monoclonal
Isotype	IgG1 Kappa
Calculated MW	34328

#### CD38 Antibody (monoclonal) (M02) - Additional Information

Gene ID 952

##### Other Names

ADP-ribosyl cyclase/cyclic ADP-ribose hydrolase 1, 2'-phospho-ADP-ribosyl cyclase, 2'-phospho-ADP-ribosyl cyclase/2'-phospho-cyclic-ADP-ribose transferase, 2'-phospho-cyclic-ADP-ribose transferase, ADP-ribosyl cyclase 1, ADPRC 1, Cyclic ADP-ribose hydrolase 1, cADPr hydrolase 1, T10, CD38, CD38

##### Target/Specificity

CD38 (AAH07964, 201 a.a. ~ 300 a.a) partial recombinant protein with GST tag. MW of the GST tag alone is 26 KDa.

##### Dilution

WB~~1:500~1000

##### Format

Clear, colorless solution in phosphate buffered saline, pH 7.2 .

##### Storage

Store at -20°C or lower. Aliquot to avoid repeated freezing and thawing.

##### Precautions

CD38 Antibody (monoclonal) (M02) is for research use only and not for use in diagnostic or therapeutic procedures.

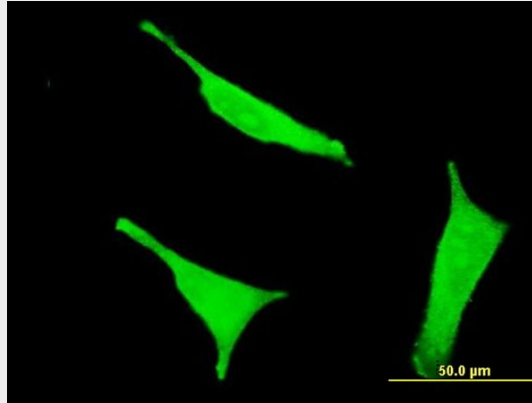
#### CD38 Antibody (monoclonal) (M02) - Protocols

Provided below are standard protocols that you may find useful for product applications.

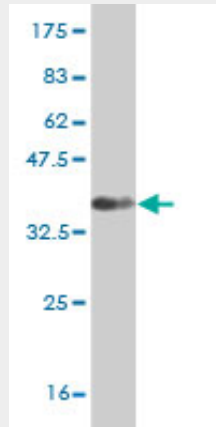
- [Western Blot](#)

- [Blocking Peptides](#)
- [Dot Blot](#)
- [Immunohistochemistry](#)
- [Immunofluorescence](#)
- [Immunoprecipitation](#)
- [Flow Cytometry](#)
- [Cell Culture](#)

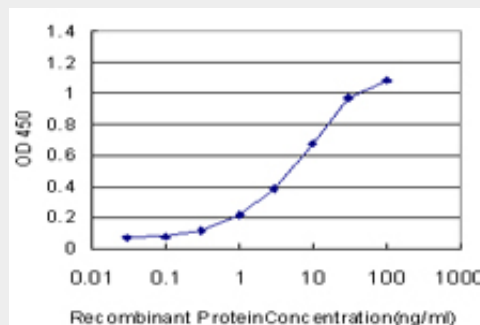
### CD38 Antibody (monoclonal) (M02) - Images



Immunofluorescence of monoclonal antibody to CD38 on HeLa cell . [antibody concentration 10 ug/ml]



Antibody Reactive Against Recombinant Protein. Western Blot detection against Immunogen (36.41 KDa) .



Detection limit for recombinant GST tagged CD38 is approximately 0.3ng/ml as a capture antibody.

### **CD38 Antibody (monoclonal) (M02) - Background**

CD38 is a novel multifunctional ectoenzyme widely expressed in cells and tissues especially in leukocytes. CD38 also functions in cell adhesion, signal transduction and calcium signaling.

### **CD38 Antibody (monoclonal) (M02) - References**

Mouse embryonic fibroblasts from CD38 knockout mice are resistant to oxidative stresses through inhibition of reactive oxygen species production and Ca(2+) overload. Ge Y, et al. *Biochem Biophys Res Commun*, 2010 Aug 20. PMID 20638362. Two genetic variants of CD38 in subjects with autism spectrum disorder and controls. Munesue T, et al. *Neurosci Res*, 2010 Jun. PMID 20435366. New genetic associations detected in a host response study to hepatitis B vaccine. Davila S, et al. *Genes Immun*, 2010 Apr. PMID 20237496. CD38/CD31 interactions activate genetic pathways leading to proliferation and migration in chronic lymphocytic leukemia cells. Deaglio S, et al. *Mol Med*, 2010 Mar. PMID 19956559. Genome-wide association study identifies common variants at four loci as genetic risk factors for Parkinson's disease. Satake W, et al. *Nat Genet*, 2009 Dec. PMID 19915576.