

CCL3 Antibody (monoclonal) (M01)

Mouse monoclonal antibody raised against a partial recombinant CCL3.

Catalog # AT1417a

Specification

CCL3 Antibody (monoclonal) (M01) - Product Information

Application	WB, E
Primary Accession	P10147
Other Accession	NM_002983
Reactivity	Human
Host	mouse
Clonality	Monoclonal
Isotype	IgG2a Kappa
Calculated MW	10085

CCL3 Antibody (monoclonal) (M01) - Additional Information

Gene ID 6348

Other Names

C-C motif chemokine 3, G0/G1 switch regulatory protein 19-1, Macrophage inflammatory protein 1-alpha, MIP-1-alpha, PAT 4641, SIS-beta, Small-inducible cytokine A3, Tonsillar lymphocyte LD78 alpha protein, MIP-1-alpha(4-69), LD78-alpha(4-69), CCL3, G0S19-1, MIP1A, SCYA3

Target/Specificity

CCL3 (NP_002974, 24 a.a. ~ 92 a.a) partial recombinant protein with GST tag. MW of the GST tag alone is 26 KDa.

Dilution

WB~~1:500~1000

Format

Clear, colorless solution in phosphate buffered saline, pH 7.2 .

Storage

Store at -20°C or lower. Aliquot to avoid repeated freezing and thawing.

Precautions

CCL3 Antibody (monoclonal) (M01) is for research use only and not for use in diagnostic or therapeutic procedures.

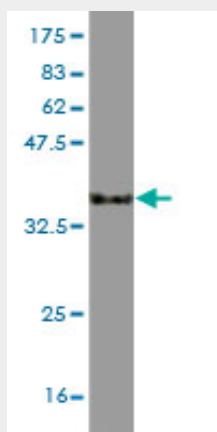
CCL3 Antibody (monoclonal) (M01) - Protocols

Provided below are standard protocols that you may find useful for product applications.

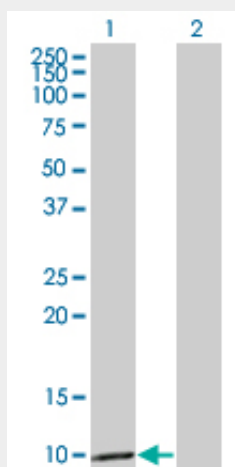
- [Western Blot](#)
- [Blocking Peptides](#)

- [Dot Blot](#)
- [Immunohistochemistry](#)
- [Immunofluorescence](#)
- [Immunoprecipitation](#)
- [Flow Cytometry](#)
- [Cell Culture](#)

CCL3 Antibody (monoclonal) (M01) - Images



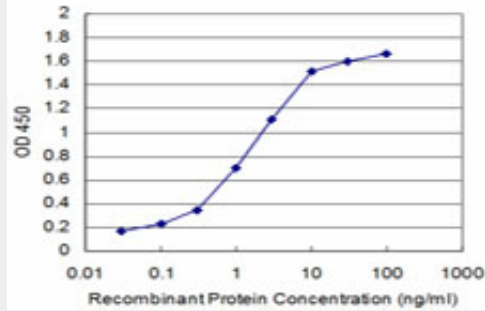
Antibody Reactive Against Recombinant Protein. Western Blot detection against Immunogen (33.33 KDa) .



Western Blot analysis of CCL3 expression in transfected 293T cell line by CCL3 monoclonal antibody (M01), clone 4E7.

Lane 1: CCL3 transfected lysate(10.1 KDa).

Lane 2: Non-transfected lysate.



Detection limit for recombinant GST tagged CCL3 is approximately 0.1ng/ml as a capture antibody.

CCL3 Antibody (monoclonal) (M01) - Background

This locus represents a small inducible cytokine. The encoded protein, also known as macrophage inflammatory protein 1 alpha, plays a role in inflammatory responses through binding to the receptors CCR1, CCR4 and CCR5. Polymorphisms at this locus may be associated with both resistance and susceptibility to infection by human immunodeficiency virus type 1.

CCL3 Antibody (monoclonal) (M01) - References

1.A multiplex assay to measure RNA transcripts of prostate cancer in urine. Quek SI, Ho ME, Loprieno MA, Ellis WJ, Elliott N, Liu AY. PLoS One. 2012;7(9):e45656. doi: 10.1371/journal.pone.0045656. Epub 2012 Sep 20.