

**CCL15 Antibody (monoclonal) (M03)**  
**Mouse monoclonal antibody raised against a partial recombinant CCL15.**  
**Catalog # AT1415a**

**Specification**

---

**CCL15 Antibody (monoclonal) (M03) - Product Information**

Application	E
Primary Accession	<a href="#">Q16663</a>
Other Accession	<a href="#">NM_032965</a>
Reactivity	Human
Host	mouse
Clonality	Monoclonal
Isotype	IgG2a Kappa
Calculated MW	12236

**CCL15 Antibody (monoclonal) (M03) - Additional Information**

**Gene ID** 6359

**Other Names**

C-C motif chemokine 15, Chemokine CC-2, HCC-2, Leukotactin-1, LKN-1, MIP-1 delta, Macrophage inflammatory protein 5, MIP-5, Mrp-2b, NCC-3, Small-inducible cytokine A15, CCL15(22-92), CCL15(25-92), CCL15(29-92), CCL15, MIP5, NCC3, SCYA15

**Target/Specificity**

CCL15 (NP\_116741, 25 a.a. ~ 113 a.a) partial recombinant protein with GST tag. MW of the GST tag alone is 26 KDa.

**Format**

Clear, colorless solution in phosphate buffered saline, pH 7.2 .

**Storage**

Store at -20°C or lower. Aliquot to avoid repeated freezing and thawing.

**Precautions**

CCL15 Antibody (monoclonal) (M03) is for research use only and not for use in diagnostic or therapeutic procedures.

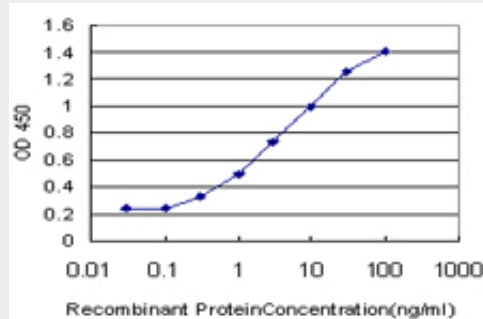
**CCL15 Antibody (monoclonal) (M03) - Protocols**

Provided below are standard protocols that you may find useful for product applications.

- [Western Blot](#)
- [Blocking Peptides](#)
- [Dot Blot](#)
- [Immunohistochemistry](#)
- [Immunofluorescence](#)

- [Immunoprecipitation](#)
- [Flow Cytometry](#)
- [Cell Culture](#)

### **CCL15 Antibody (monoclonal) (M03) - Images**



Detection limit for recombinant GST tagged CCL15 is approximately 0.03ng/ml as a capture antibody.

### **CCL15 Antibody (monoclonal) (M03) - Background**

This gene, chemokine (C-C motif) ligand 15, is one of several CC cytokine genes clustered on 17q11.2. The CC cytokines are secreted proteins characterized by two adjacent cysteines. The cytokine encoded by this gene is chemotactic for T cells and monocytes and induces N-acetyl-beta-D-glucosaminidase release in monocytes. It induces changes in intracellular calcium concentration in monocytes and is thought to act through the CCR1 receptor. Read-through transcripts are expressed that include exons from the downstream cytokine gene, chemokine (C-C motif) ligand 14, and are represented as GeneID: 348249.

### **CCL15 Antibody (monoclonal) (M03) - References**

Interleukin-9 polymorphism in infants with respiratory syncytial virus infection: an opposite effect in boys and girls. Schuurhof A, et al. *Pediatr Pulmonol*, 2010 Jun. PMID 20503287. Personalized smoking cessation: interactions between nicotine dose, dependence and quit-success genotype score. Rose JE, et al. *Mol Med*, 2010 Jul-Aug. PMID 20379614. New genetic associations detected in a host response study to hepatitis B vaccine. Davila S, et al. *Genes Immun*, 2010 Apr. PMID 20237496. Mycobacterium tuberculosis-induced expression of Leukotactin-1 is mediated by the PI3-K/PDK1/Akt signaling pathway. Cho JE, et al. *Mol Cells*, 2010 Jan. PMID 20016943. A novel role for constitutively expressed epithelial-derived chemokines as antibacterial peptides in the intestinal mucosa. Kotarsky K, et al. *Mucosal Immunol*, 2010 Jan. PMID 19812544.