

## **CBX2 Antibody (monoclonal) (M04)**

Mouse monoclonal antibody raised against a partial recombinant CBX2.

Catalog # AT1409a

### **Specification**

---

#### **CBX2 Antibody (monoclonal) (M04) - Product Information**

Application	WB, E
Primary Accession	<a href="#">Q14781</a>
Other Accession	<a href="#">NM_032647</a>
Reactivity	Human
Host	mouse
Clonality	Monoclonal
Isotype	IgG2a Kappa
Calculated MW	56081

#### **CBX2 Antibody (monoclonal) (M04) - Additional Information**

**Gene ID** 84733

#### **Other Names**

Chromobox protein homolog 2, CBX2

#### **Target/Specificity**

CBX2 (NP\_116036, 66 a.a. ~ 165 a.a) partial recombinant protein with GST tag. MW of the GST tag alone is 26 KDa.

#### **Dilution**

WB~~1:500~1000

#### **Format**

Clear, colorless solution in phosphate buffered saline, pH 7.2 .

#### **Storage**

Store at -20°C or lower. Aliquot to avoid repeated freezing and thawing.

#### **Precautions**

CBX2 Antibody (monoclonal) (M04) is for research use only and not for use in diagnostic or therapeutic procedures.

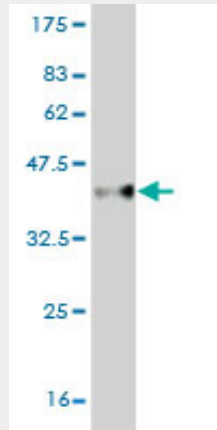
#### **CBX2 Antibody (monoclonal) (M04) - Protocols**

Provided below are standard protocols that you may find useful for product applications.

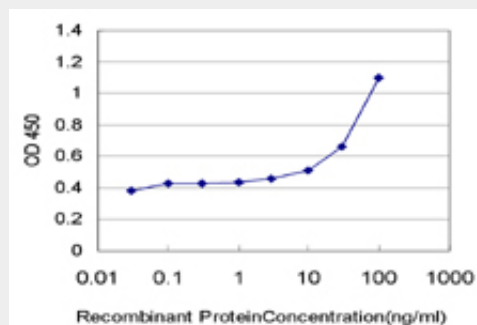
- [Western Blot](#)
- [Blocking Peptides](#)
- [Dot Blot](#)
- [Immunohistochemistry](#)

- [Immunofluorescence](#)
- [Immunoprecipitation](#)
- [Flow Cytometry](#)
- [Cell Culture](#)

### CBX2 Antibody (monoclonal) (M04) - Images



Antibody Reactive Against Recombinant Protein. Western Blot detection against Immunogen (36.74 KDa) .



Detection limit for recombinant GST tagged CBX2 is approximately 3ng/ml as a capture antibody.

### CBX2 Antibody (monoclonal) (M04) - Background

This gene encodes a component of the polycomb multiprotein complex, which is required to maintain the transcriptionally repressive state of many genes throughout development via chromatin remodeling and modification of histones. Disruption of this gene in mice results in male-to-female gonadal sex reversal. Mutations in this gene are also associated with gonadal dysgenesis in humans. Alternatively spliced transcript variants encoding different isoforms have been noted for this gene.

### CBX2 Antibody (monoclonal) (M04) - References

Ovaries and female phenotype in a girl with 46,XY karyotype and mutations in the CBX2 gene. Biason-Lauber A, et al. *Am J Hum Genet*, 2009 May. PMID 19361780. Human polycomb 2 protein is a SUMO E3 ligase and alleviates substrate-induced inhibition of cystathionine beta-synthase sumoylation. Agrawal N, et al. *PLoS One*, 2008. PMID 19107218. An empirical framework for binary interactome mapping. Venkatesan K, et al. *Nat Methods*, 2009 Jan. PMID 19060904. Towards a proteome-scale map of the human protein-protein interaction network. Rual JF, et al. *Nature*, 2005 Oct 20. PMID 16189514. Transcriptome characterization elucidates signaling networks that control human ES cell growth and differentiation. Brandenberger R, et al. *Nat Biotechnol*, 2004 Jun. PMID 15146197.