

CANT1 Antibody (monoclonal) (M01)

Mouse monoclonal antibody raised against a partial recombinant CANT1.

Catalog # AT1384a

Specification

CANT1 Antibody (monoclonal) (M01) - Product Information

Application	WB, E
Primary Accession	O8WVQ1
Other Accession	BC017655
Reactivity	Human
Host	mouse
Clonality	Monoclonal
Isotype	IgG2a Kappa
Calculated MW	44840

CANT1 Antibody (monoclonal) (M01) - Additional Information

Gene ID 124583

Other Names

Soluble calcium-activated nucleotidase 1, SCAN-1, Apyrase homolog, Putative MAPK-activating protein PM09, Putative NF-kappa-B-activating protein 107, CANT1, SHAPY

Target/Specificity

CANT1 (AAH17655, 302 a.a. ~ 401 a.a) partial recombinant protein with GST tag. MW of the GST tag alone is 26 KDa.

Dilution

WB~~1:500~1000

Format

Clear, colorless solution in phosphate buffered saline, pH 7.2 .

Storage

Store at -20°C or lower. Aliquot to avoid repeated freezing and thawing.

Precautions

CANT1 Antibody (monoclonal) (M01) is for research use only and not for use in diagnostic or therapeutic procedures.

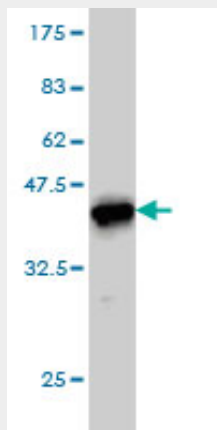
CANT1 Antibody (monoclonal) (M01) - Protocols

Provided below are standard protocols that you may find useful for product applications.

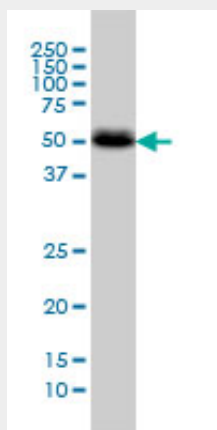
- [Western Blot](#)
- [Blocking Peptides](#)
- [Dot Blot](#)

- [Immunohistochemistry](#)
- [Immunofluorescence](#)
- [Immunoprecipitation](#)
- [Flow Cytometry](#)
- [Cell Culture](#)

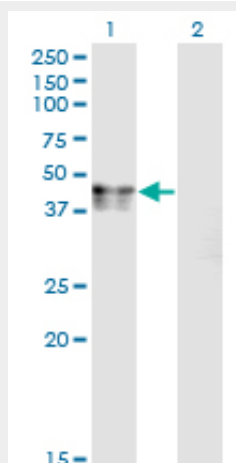
CANT1 Antibody (monoclonal) (M01) - Images



Antibody Reactive Against Recombinant Protein. Western Blot detection against Immunogen (36.63 KDa) .

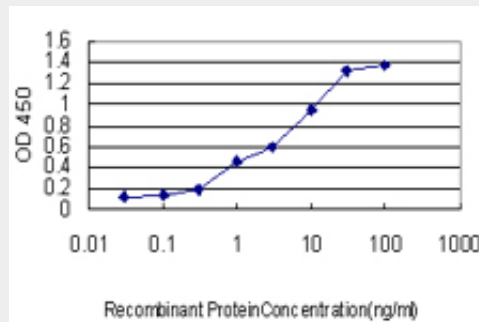


CANT1 monoclonal antibody (M01), clone 2D3 Western Blot analysis of CANT1 expression in A-431 ((Cat # AT1384a)



Western Blot analysis of CANT1 expression in transfected 293T cell line by CANT1 monoclonal antibody (M01), clone 2D3.

Lane 1: CANT1 transfected lysate(44.8 KDa).
Lane 2: Non-transfected lysate.



Detection limit for recombinant GST tagged CANT1 is approximately 0.1ng/ml as a capture antibody.

CANT1 Antibody (monoclonal) (M01) - Background

This protein encoded by this gene belongs to the apyrase family. It functions as a calcium-dependent nucleotidase with a preference for UDP. Mutations in this gene are associated with Desbuquois dysplasia with hand anomalies. Alternatively spliced transcript variants have been noted for this gene.

CANT1 Antibody (monoclonal) (M01) - References

1.ERG rearrangement in small cell prostatic and lung cancer.Scheble VJ, Braun M, Wilbertz T, Stiedl AC, Petersen K, Schilling D, Reischl M, Seitz G, Fend F, Kristiansen G, Perner S.Histopathology. 2010 Jun;56(7):937-43.