

## **CACNB1 Antibody (monoclonal) (M01)**

Mouse monoclonal antibody raised against a partial recombinant CACNB1.

Catalog # AT1366a

### **Specification**

---

#### **CACNB1 Antibody (monoclonal) (M01) - Product Information**

Application	WB
Primary Accession	<a href="#">O02641</a>
Other Accession	<a href="#">NM_000723</a>
Reactivity	Human
Host	mouse
Clonality	Monoclonal
Isotype	IgG2a Kappa
Calculated MW	65714

#### **CACNB1 Antibody (monoclonal) (M01) - Additional Information**

**Gene ID** 782

##### **Other Names**

Voltage-dependent L-type calcium channel subunit beta-1, CAB1, Calcium channel voltage-dependent subunit beta 1, CACNB1, CACNLB1

##### **Target/Specificity**

CACNB1 (NP\_000714, 500 a.a. ~ 598 a.a) partial recombinant protein with GST tag. MW of the GST tag alone is 26 KDa.

##### **Dilution**

WB~~1:500~1000

##### **Format**

Clear, colorless solution in phosphate buffered saline, pH 7.2 .

##### **Storage**

Store at -20°C or lower. Aliquot to avoid repeated freezing and thawing.

##### **Precautions**

CACNB1 Antibody (monoclonal) (M01) is for research use only and not for use in diagnostic or therapeutic procedures.

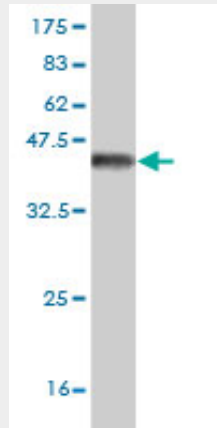
#### **CACNB1 Antibody (monoclonal) (M01) - Protocols**

Provided below are standard protocols that you may find useful for product applications.

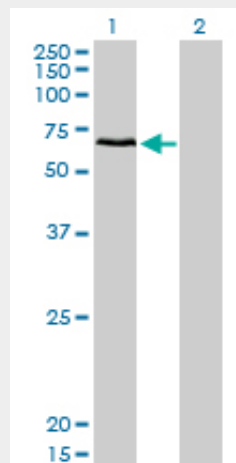
- [Western Blot](#)
- [Blocking Peptides](#)
- [Dot Blot](#)

- [Immunohistochemistry](#)
- [Immunofluorescence](#)
- [Immunoprecipitation](#)
- [Flow Cytometry](#)
- [Cell Culture](#)

### CACNB1 Antibody (monoclonal) (M01) - Images



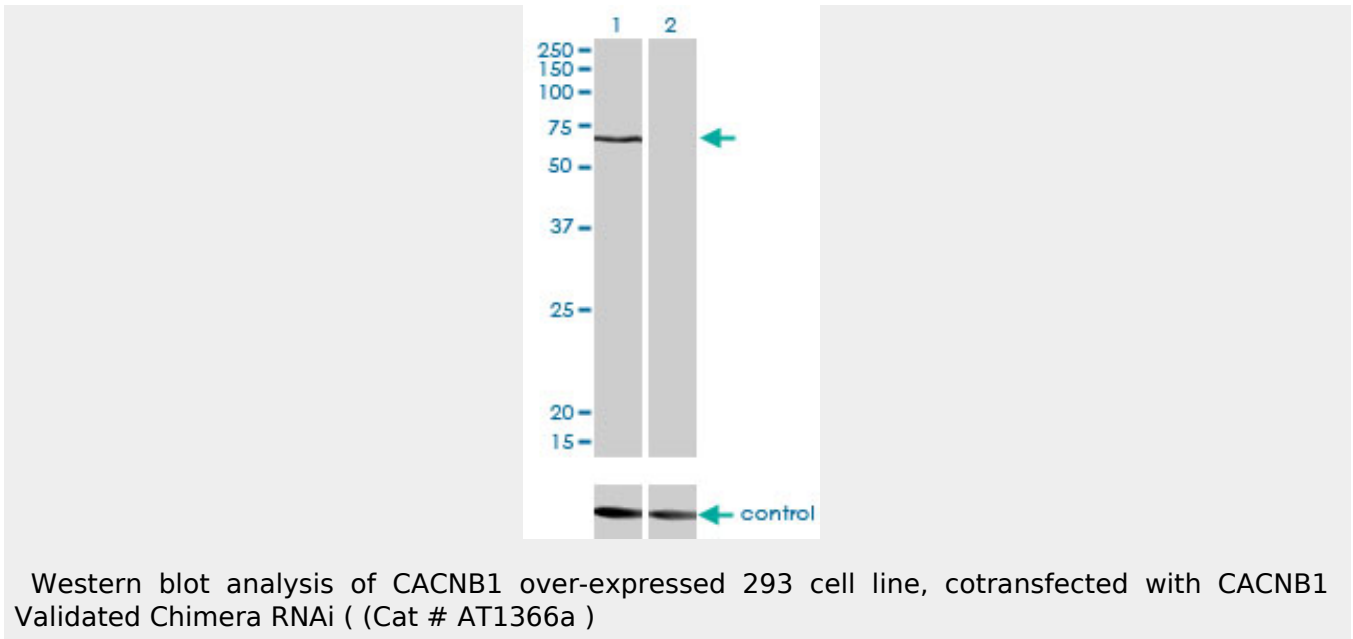
Antibody Reactive Against Recombinant Protein. Western Blot detection against Immunogen (36.63 KDa) .



Western Blot analysis of CACNB1 expression in transfected 293T cell line by CACNB1 monoclonal antibody (M01), clone 1G6.

Lane 1: CACNB1 transfected lysate(65.7 KDa).

Lane 2: Non-transfected lysate.



### **CACNB1 Antibody (monoclonal) (M01) - Background**

The protein encoded by this gene belongs to the calcium channel beta subunit family. It plays an important role in the calcium channel by modulating G protein inhibition, increasing peak calcium current, controlling the alpha-1 subunit membrane targeting and shifting the voltage dependence of activation and inactivation. Alternative splicing occurs at this locus and three transcript variants encoding three distinct isoforms have been identified.

### **CACNB1 Antibody (monoclonal) (M01) - References**

1. The  $\beta$ 1 subunit of L-type voltage-gated  $\text{Ca}^{2+}$  channels independently binds to and inhibits the gating of large-conductance  $\text{Ca}^{2+}$ -activated  $\text{K}^{+}$  channels. Zou S, Jha S, Kim EY, Dryer SE. *Mol Pharmacol*. 2008 Feb;73(2):369-78. Epub 2007 Nov 7.