

CAB39L Antibody (monoclonal) (M01)

Mouse monoclonal antibody raised against a full length recombinant CAB39L.

Catalog # AT1360a

Specification

CAB39L Antibody (monoclonal) (M01) - Product Information

Application	WB, IHC
Primary Accession	O9H9S4
Other Accession	BC010993
Reactivity	Human
Host	mouse
Clonality	Monoclonal
Isotype	IgG1 kappa
Calculated MW	39088

CAB39L Antibody (monoclonal) (M01) - Additional Information**Gene ID** 81617**Other Names**

Calcium-binding protein 39-like, Antigen MLAA-34, MO25beta, Mo25-like protein, CAB39L

Target/Specificity

CAB39L (AAH10993, 1 a.a. ~ 337 a.a) full-length recombinant protein with GST tag. MW of the GST tag alone is 26 KDa.

Dilution

WB~~1:500~1000

Format

Clear, colorless solution in phosphate buffered saline, pH 7.2 .

Storage

Store at -20°C or lower. Aliquot to avoid repeated freezing and thawing.

Precautions

CAB39L Antibody (monoclonal) (M01) is for research use only and not for use in diagnostic or therapeutic procedures.

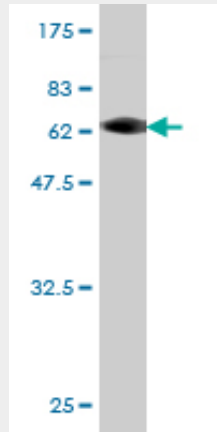
CAB39L Antibody (monoclonal) (M01) - Protocols

Provided below are standard protocols that you may find useful for product applications.

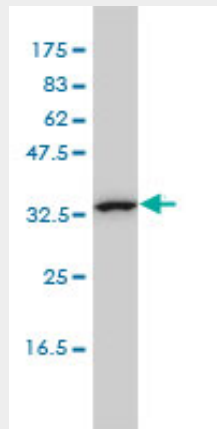
- [Western Blot](#)
- [Blocking Peptides](#)
- [Dot Blot](#)
- [Immunohistochemistry](#)

- [Immunofluorescence](#)
- [Immunoprecipitation](#)
- [Flow Cytometry](#)
- [Cell Culture](#)

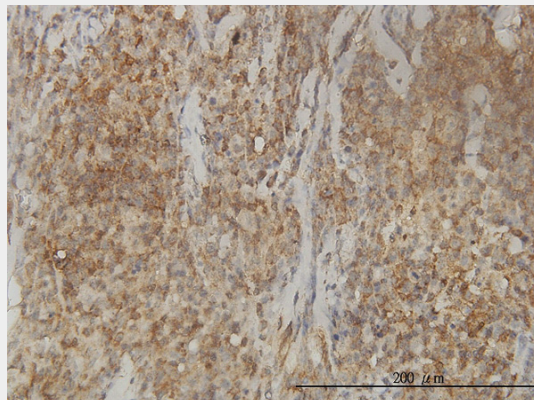
CAB39L Antibody (monoclonal) (M01) - Images



Antibody Reactive Against Recombinant Protein. Western Blot detection against Immunogen (62.81 kDa) .



CAB39L monoclonal antibody (M01), clone 3B11-1A4 Western Blot analysis of CAB39L expression in K-562 ((Cat # AT1360a)



Immunoperoxidase of monoclonal antibody to CAB39L on formalin-fixed paraffin-embedded human lymphoma tissue. [antibody concentration 3 ug/ml]

CAB39L Antibody (monoclonal) (M01) - References

Personalized smoking cessation: interactions between nicotine dose, dependence and quit-success genotype score. Rose JE, et al. Mol Med, 2010 Jul-Aug. PMID 20379614. Identification and functional characterization of the novel acute monocytic leukemia associated antigen MLAA-34. Zhang PY, et al. Cancer Immunol Immunother, 2009 Feb. PMID 18592235. Large-scale mapping of human protein-protein interactions by mass spectrometry. Ewing RM, et al. Mol Syst Biol, 2007. PMID 17353931. Diversification of transcriptional modulation: large-scale identification and characterization of putative alternative promoters of human genes. Kimura K, et al. Genome Res, 2006 Jan. PMID 16344560. AMP-activated protein kinase: ancient energy gauge provides clues to modern understanding of metabolism. Kahn BB, et al. Cell Metab, 2005 Jan. PMID 16054041.