

## **C9orf86 Antibody (monoclonal) (M01)**

Mouse monoclonal antibody raised against a full length recombinant C9orf86.

Catalog # AT1351a

### **Specification**

---

#### **C9orf86 Antibody (monoclonal) (M01) - Product Information**

Application	IF, WB, E
Primary Accession	<a href="#">Q3YEC7</a>
Other Accession	<a href="#">BC002945</a>
Reactivity	Human
Host	mouse
Clonality	Monoclonal
Isotype	IgG2a kappa
Calculated MW	79549

#### **C9orf86 Antibody (monoclonal) (M01) - Additional Information**

**Gene ID** 55684

##### **Other Names**

Rab-like protein 6, GTP-binding protein Parf, Partner of ARF, Rab-like protein 1, RBEL1, RABL6, C9orf86, PARF

##### **Target/Specificity**

C9orf86 (AAH02945, 1 a.a. ~ 477 a.a) full-length recombinant protein with GST tag. MW of the GST tag alone is 26 KDa.

##### **Dilution**

WB~~1:500~1000

##### **Format**

Clear, colorless solution in phosphate buffered saline, pH 7.2 .

##### **Storage**

Store at -20°C or lower. Aliquot to avoid repeated freezing and thawing.

##### **Precautions**

C9orf86 Antibody (monoclonal) (M01) is for research use only and not for use in diagnostic or therapeutic procedures.

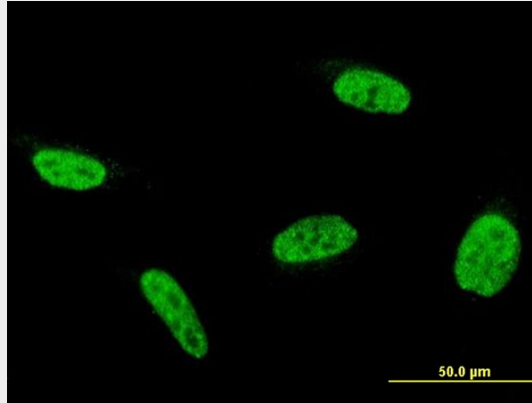
#### **C9orf86 Antibody (monoclonal) (M01) - Protocols**

Provided below are standard protocols that you may find useful for product applications.

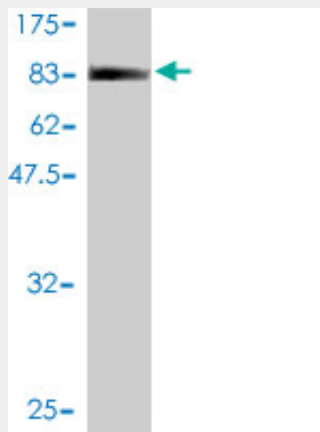
- [Western Blot](#)
- [Blocking Peptides](#)
- [Dot Blot](#)

- [Immunohistochemistry](#)
- [Immunofluorescence](#)
- [Immunoprecipitation](#)
- [Flow Cytometry](#)
- [Cell Culture](#)

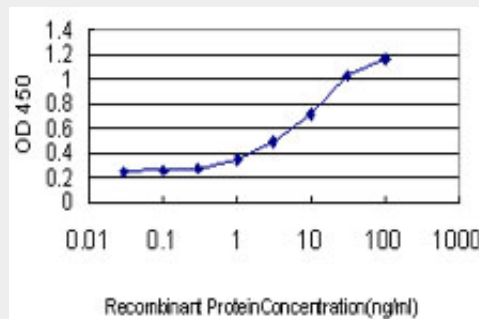
**C9orf86 Antibody (monoclonal) (M01) - Images**



Immunofluorescence of monoclonal antibody to C9orf86 on HeLa cell . [antibody concentration 10 ug/ml]



Antibody Reactive Against Recombinant Protein. Western Blot detection against Immunogen (78.21 KDa) .



Detection limit for recombinant GST tagged C9orf86 is approximately 0.03ng/ml as a capture antibody.

**C9orf86 Antibody (monoclonal) (M01) - References**

1. Down-regulation of c9orf86 in human breast cancer cells inhibits cell proliferation, invasion and tumor growth and correlates with survival of breast cancer patients. Li YY, Fu S, Wang XP, Wang HY, Zeng MS, Shao JY. *PLoS One*. 2013 Aug 14;8(8):e71764. doi: 10.1371/journal.pone.0071764.