

## **C6orf139 Antibody (monoclonal) (M01)**

Mouse monoclonal antibody raised against a full length recombinant C6orf139.

Catalog # AT1348a

### **Specification**

---

#### **C6orf139 Antibody (monoclonal) (M01) - Product Information**

Application	IF, WB, E
Primary Accession	<a href="#">O7L2Z9</a>
Other Accession	<a href="#">BC016279</a>
Reactivity	Human
Host	mouse
Clonality	Monoclonal
Isotype	IgG1 kappa
Calculated MW	30595

#### **C6orf139 Antibody (monoclonal) (M01) - Additional Information**

**Gene ID** 55166

##### **Other Names**

Centromere protein Q, CENP-Q, CENPQ, C6orf139

##### **Target/Specificity**

C6orf139 (AAH16279.2, 1 a.a. ~ 268 a.a) full-length recombinant protein with GST tag. MW of the GST tag alone is 26 KDa.

##### **Dilution**

WB ~ 1:500 ~ 1000

##### **Format**

Clear, colorless solution in phosphate buffered saline, pH 7.2 .

##### **Storage**

Store at -20°C or lower. Aliquot to avoid repeated freezing and thawing.

##### **Precautions**

C6orf139 Antibody (monoclonal) (M01) is for research use only and not for use in diagnostic or therapeutic procedures.

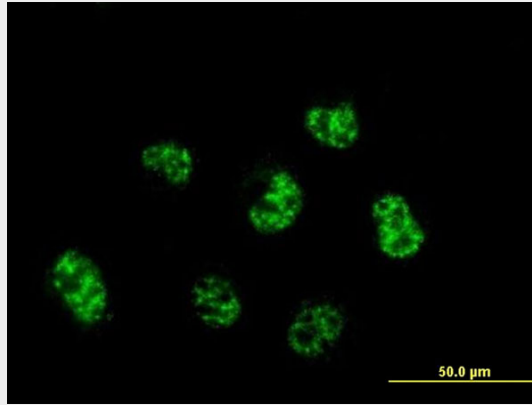
#### **C6orf139 Antibody (monoclonal) (M01) - Protocols**

Provided below are standard protocols that you may find useful for product applications.

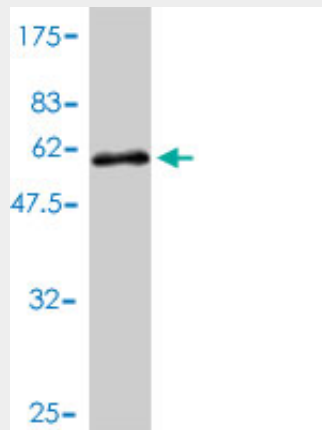
- [Western Blot](#)
- [Blocking Peptides](#)
- [Dot Blot](#)
- [Immunohistochemistry](#)

- [Immunofluorescence](#)
- [Immunoprecipitation](#)
- [Flow Cytometry](#)
- [Cell Culture](#)

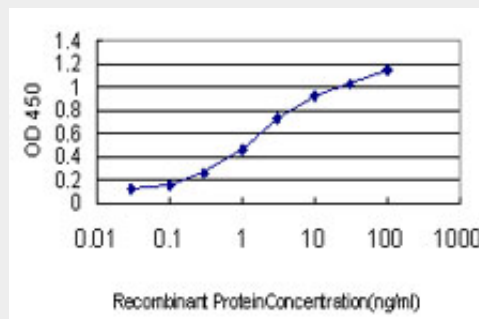
**C6orf139 Antibody (monoclonal) (M01) - Images**



Immunofluorescence of monoclonal antibody to C6orf139 on HeLa cell . [antibody concentration 10 ug/ml]



Antibody Reactive Against Recombinant Protein. Western Blot detection against Immunogen (55.22 KDa) .



Detection limit for recombinant GST tagged C6orf139 is approximately 0.03ng/ml as a capture antibody.

**C6orf139 Antibody (monoclonal) (M01) - Background**

CENPQ is a subunit of a CENPH (MIM 605607)-CENPI (MIM 300065)-associated centromeric complex

that targets CENPA (MIM 117139) to centromeres and is required for proper kinetochore function and mitotic progression (Okada et al., 2006 [PubMed 16622420]).

### **C6orf139 Antibody (monoclonal) (M01) - References**

The CENP-H-I complex is required for the efficient incorporation of newly synthesized CENP-A into centromeres. Okada M, et al. Nat Cell Biol, 2006 May. PMID 16622420. The human CENP-A centromeric nucleosome-associated complex. Foltz DR, et al. Nat Cell Biol, 2006 May. PMID 16622419. The status, quality, and expansion of the NIH full-length cDNA project: the Mammalian Gene Collection (MGC). Gerhard DS, et al. Genome Res, 2004 Oct. PMID 15489334. Complete sequencing and characterization of 21,243 full-length human cDNAs. Ota T, et al. Nat Genet, 2004 Jan. PMID 14702039. The DNA sequence and analysis of human chromosome 6. Mungall AJ, et al. Nature, 2003 Oct 23. PMID 14574404.