

**C3 Antibody (monoclonal) (M01)**

Mouse monoclonal antibody raised against a partial recombinant C3.

Catalog # AT1345a

**Specification**

---

**C3 Antibody (monoclonal) (M01) - Product Information**

Application	WB, IHC, E
Primary Accession	<a href="#">P01024</a>
Other Accession	<a href="#">NM_000064</a>
Reactivity	Human
Host	mouse
Clonality	Monoclonal
Isotype	IgG2a Kappa
Calculated MW	187148

**C3 Antibody (monoclonal) (M01) - Additional Information**

Gene ID 718

**Other Names**

Complement C3, C3 and PZP-like alpha-2-macroglobulin domain-containing protein 1, Complement C3 beta chain, C3-beta-c, C3bc, Complement C3 alpha chain, C3a anaphylatoxin, Acylation stimulating protein, ASP, C3adesArg, Complement C3b alpha' chain, Complement C3c alpha' chain fragment 1, Complement C3dg fragment, Complement C3g fragment, Complement C3d fragment, Complement C3f fragment, Complement C3c alpha' chain fragment 2, C3, CPAMD1

**Target/Specificity**

C3 (NP\_000055, 1534 a.a. ~ 1644 a.a) partial recombinant protein with GST tag. MW of the GST tag alone is 26 KDa.

**Dilution**

WB~~1:500~1000

**Format**

Clear, colorless solution in phosphate buffered saline, pH 7.2 .

**Storage**

Store at -20°C or lower. Aliquot to avoid repeated freezing and thawing.

**Precautions**

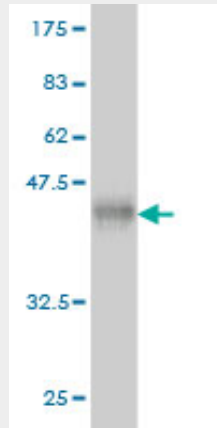
C3 Antibody (monoclonal) (M01) is for research use only and not for use in diagnostic or therapeutic procedures.

**C3 Antibody (monoclonal) (M01) - Protocols**

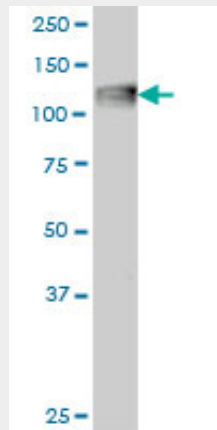
Provided below are standard protocols that you may find useful for product applications.

- [Western Blot](#)
- [Blocking Peptides](#)
- [Dot Blot](#)
- [Immunohistochemistry](#)
- [Immunofluorescence](#)
- [Immunoprecipitation](#)
- [Flow Cytometry](#)
- [Cell Culture](#)

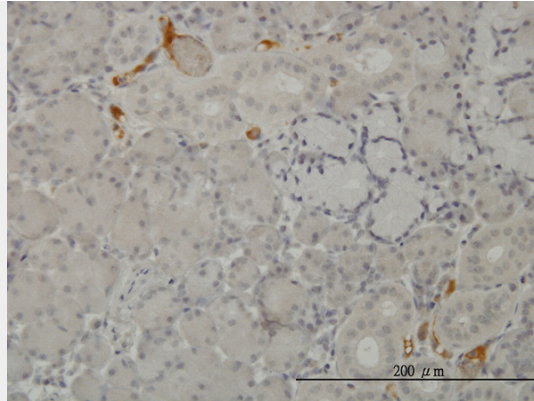
### C3 Antibody (monoclonal) (M01) - Images



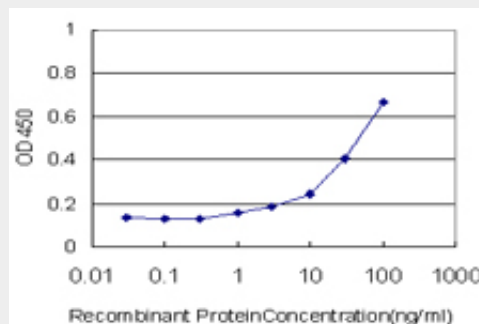
Antibody Reactive Against Recombinant Protein. Western Blot detection against Immunogen (37.95 KDa) .



C3 monoclonal antibody (M01), clone 5F9 Western Blot analysis of C3 expression in A-431 ( (Cat # AT1345a )



Immunoperoxidase of monoclonal antibody to C3 on formalin-fixed paraffin-embedded human salivary gland. [antibody concentration 3 ug/ml]



Detection limit for recombinant GST tagged C3 is approximately 1ng/ml as a capture antibody.

### **C3 Antibody (monoclonal) (M01) - Background**

Complement component C3 plays a central role in the activation of complement system. Its activation is required for both classical and alternative complement activation pathways. People with C3 deficiency are susceptible to bacterial infection.

### **C3 Antibody (monoclonal) (M01) - References**

R102G polymorphism of the C3 gene associated with exudative age-related macular degeneration in a French population. Zerbib J, et al. Mol Vis, 2010 Jul 15. PMID 20664795. Evaluation of candidate stromal epithelial cross-talk genes identifies association between risk of serous ovarian cancer and TERT, a cancer susceptibility hot-spot. Johnatty SE, et al. PLoS Genet, 2010 Jul 8. PMID 20628624. Variation at the NFATC2 Locus Increases the Risk of Thiazolinedione-Induced Edema in the Diabetes REduction Assessment with ramipril and rosiglitazone Medication (DREAM) Study. Bailey SD, et al. Diabetes Care, 2010 Jul 13. PMID 20628086. Single nucleotide polymorphisms in inflammation-related genes are associated with venous thromboembolism. Beckers MM, et al. Eur J Intern Med, 2010 Aug. PMID 20603037. Determination of a gene and environment risk model for age-related macular degeneration. Gibson J, et al. Br J Ophthalmol, 2010 Jun 24. PMID 20576771.

### **C3 Antibody (monoclonal) (M01) - Citations**

- [Complement Component 3 as a Surrogate Hallmark for Metabolic Abnormalities in Patients with Chronic Hepatitis C.](#)
- [SAK-HV Triggered a Short-period Lipid-lowering Biotherapy Based on the Energy Model of Liver Proliferation via a Novel Pathway.](#)
- [Complement Component 3 Is Regulated by TWIST1 and Mediates Epithelial-Mesenchymal Transition.](#)
- [Proteomic analysis of serum proteins in acute ischemic stroke patients treated with acupuncture.](#)

