

C1GALT1 Antibody (monoclonal) (M01)

Mouse monoclonal antibody raised against a partial recombinant C1GALT1.

Catalog # AT1334a

Specification

C1GALT1 Antibody (monoclonal) (M01) - Product Information

Application	WB, IHC, E
Primary Accession	O9NS00
Other Accession	NM_020156
Reactivity	Human
Host	mouse
Clonality	Monoclonal
Isotype	IgG2a Kappa
Calculated MW	42203

C1GALT1 Antibody (monoclonal) (M01) - Additional Information

Gene ID 56913

Other Names

Glycoprotein-N-acetylgalactosamine 3-beta-galactosyltransferase 1, B3Gal-T8, Core 1 O-glycan T-synthase, Core 1 UDP-galactose:N-acetylgalactosamine-alpha-R beta 1, 3-galactosyltransferase 1, Beta-1, 3-galactosyltransferase, Core 1 beta1, 3-galactosyltransferase 1, C1GalT1, Core 1 beta3-Gal-T1, C1GALT1

Target/Specificity

C1GALT1 (NP_064541, 264 a.a. ~ 363 a.a) partial recombinant protein with GST tag. MW of the GST tag alone is 26 KDa.

Dilution

WB~~1:500~1000

Format

Clear, colorless solution in phosphate buffered saline, pH 7.2 .

Storage

Store at -20°C or lower. Aliquot to avoid repeated freezing and thawing.

Precautions

C1GALT1 Antibody (monoclonal) (M01) is for research use only and not for use in diagnostic or therapeutic procedures.

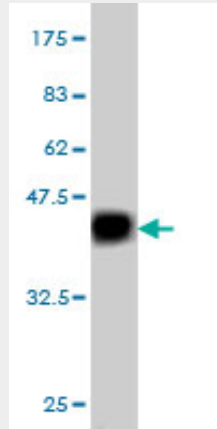
C1GALT1 Antibody (monoclonal) (M01) - Protocols

Provided below are standard protocols that you may find useful for product applications.

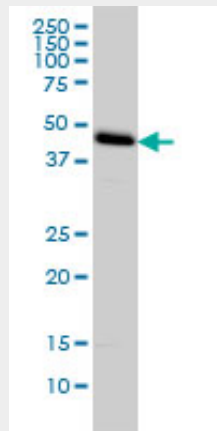
- [Western Blot](#)

- [Blocking Peptides](#)
- [Dot Blot](#)
- [Immunohistochemistry](#)
- [Immunofluorescence](#)
- [Immunoprecipitation](#)
- [Flow Cytometry](#)
- [Cell Culture](#)

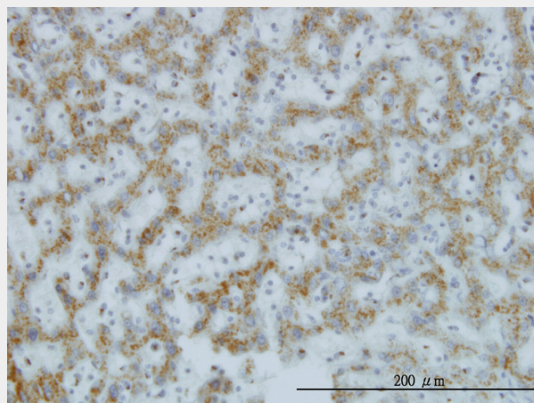
C1GALT1 Antibody (monoclonal) (M01) - Images



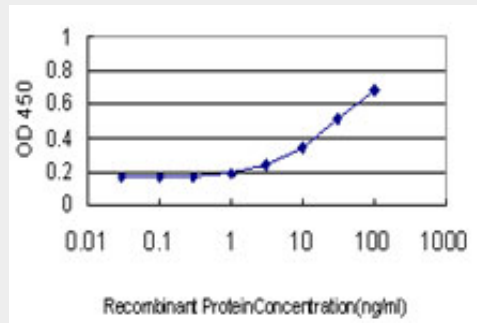
Antibody Reactive Against Recombinant Protein. Western Blot detection against Immunogen (36.74 kDa) .



C1GALT1 monoclonal antibody (M01), clone 1F1 Western Blot analysis of C1GALT1 expression in HeLa ((Cat # AT1334a)



Immunoperoxidase of monoclonal antibody to C1GALT1 on formalin-fixed paraffin-embedded human hepatocellular carcinoma. [antibody concentration 3 ug/ml]



Detection limit for recombinant GST tagged C1GALT1 is approximately 0.3ng/ml as a capture antibody.

C1GALT1 Antibody (monoclonal) (M01) - Background

The protein encoded by this gene generates the common core 1 O-glycan structure, Gal-beta-1-3GalNAc-R, by the transfer of Gal from UDP-Gal to GalNAc-alpha-1-R. Core 1 is a precursor for many extended mucin-type O-glycans on cell surface and secreted glycoproteins. Studies in mice suggest that this gene plays a key role in thrombopoiesis and kidney homeostasis.

C1GALT1 Antibody (monoclonal) (M01) - References

1. Association of cell surface mucins with galectin-3 contributes to the ocular surface epithelial barrier. Argueso P, Guzman-Aranguez A, Mantelli F, Cao Z, Ricciuto J, Panjwani N. *J Biol Chem*. 2009 Aug 21;284(34):23037-45. Epub 2009 Jun 25.