

C17orf75 Antibody (monoclonal) (M02)

Mouse monoclonal antibody raised against a partial recombinant C17orf75.

Catalog # AT1331a

Specification

C17orf75 Antibody (monoclonal) (M02) - Product Information

Application	WB
Primary Accession	O9HAS0
Other Accession	NM_022344
Reactivity	Human, Mouse, Rat
Host	mouse
Clonality	Monoclonal
Isotype	IgG2a Kappa
Calculated MW	44622

C17orf75 Antibody (monoclonal) (M02) - Additional Information**Gene ID** 64149**Other Names**

Protein Njmu-R1, C17orf75

Target/Specificity

C17orf75 (NP_071739, 1 a.a. ~ 100 a.a) partial recombinant protein with GST tag. MW of the GST tag alone is 26 KDa.

Dilution

WB~~1:500~1000

Format

Clear, colorless solution in phosphate buffered saline, pH 7.2 .

Storage

Store at -20°C or lower. Aliquot to avoid repeated freezing and thawing.

Precautions

C17orf75 Antibody (monoclonal) (M02) is for research use only and not for use in diagnostic or therapeutic procedures.

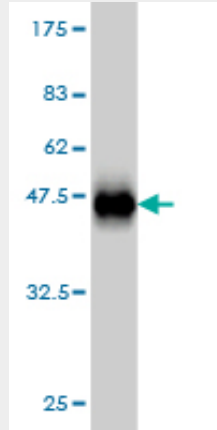
C17orf75 Antibody (monoclonal) (M02) - Protocols

Provided below are standard protocols that you may find useful for product applications.

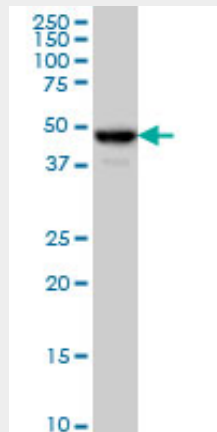
- [Western Blot](#)
- [Blocking Peptides](#)
- [Dot Blot](#)
- [Immunohistochemistry](#)

- [Immunofluorescence](#)
- [Immunoprecipitation](#)
- [Flow Cytometry](#)
- [Cell Culture](#)

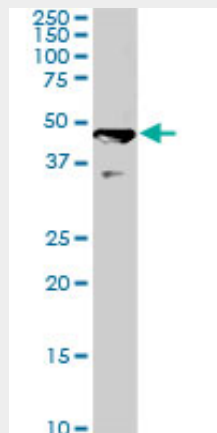
C17orf75 Antibody (monoclonal) (M02) - Images



Antibody Reactive Against Recombinant Protein. Western Blot detection against Immunogen (36.74 kDa) .

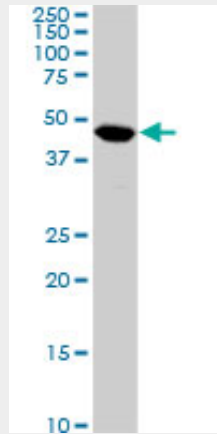


C17orf75 monoclonal antibody (M02), clone 2D7 Western Blot analysis of C17orf75 expression in HeLa ((Cat # AT1331a)

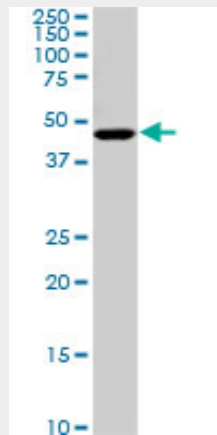


C17orf75 monoclonal antibody (M02), clone 2D7. Western Blot analysis of C17orf75 expression in

PC-12 ((Cat # AT1331a)



C17orf75 monoclonal antibody (M02), clone 2D7. Western Blot analysis of C17orf75 expression in Raw 264.7 ((Cat # AT1331a)



C17orf75 monoclonal antibody (M02), clone 2D7. Western Blot analysis of C17orf75 expression in NIH/3T3 ((Cat # AT1331a)

C17orf75 Antibody (monoclonal) (M02) - References

Toward a confocal subcellular atlas of the human proteome. Barbe L, et al. Mol Cell Proteomics, 2008 Mar. PMID 18029348. The status, quality, and expansion of the NIH full-length cDNA project: the Mammalian Gene Collection (MGC). Gerhard DS, et al. Genome Res, 2004 Oct. PMID 15489334. Generation and initial analysis of more than 15,000 full-length human and mouse cDNA sequences. Strausberg RL, et al. Proc Natl Acad Sci U S A, 2002 Dec 24. PMID 12477932. Large-scale concatenation cDNA sequencing. Yu W, et al. Genome Res, 1997 Apr. PMID 9110174. A double adaptor method for improved shotgun library construction. Andersson B, et al. Anal Biochem, 1996 Apr 5. PMID 8619474.