

C10orf4 Antibody (monoclonal) (M02)

Mouse monoclonal antibody raised against a partial recombinant C10orf4.

Catalog # AT1325a

Specification

C10orf4 Antibody (monoclonal) (M02) - Product Information

Application	WB
Primary Accession	O70Z53
Other Accession	NM_145246
Reactivity	Human, Rat
Host	mouse
Clonality	Monoclonal
Isotype	IgG1 Kappa
Calculated MW	37548

C10orf4 Antibody (monoclonal) (M02) - Additional Information**Gene ID** 118924**Other Names**

Protein FRA10AC1, FRA10AC1, C10orf4

Target/Specificity

C10orf4 (NP_660289, 1 a.a. ~ 100 a.a) partial recombinant protein with GST tag. MW of the GST tag alone is 26 KDa.

Dilution

WB~~1:500~1000

Format

Clear, colorless solution in phosphate buffered saline, pH 7.2 .

Storage

Store at -20°C or lower. Aliquot to avoid repeated freezing and thawing.

Precautions

C10orf4 Antibody (monoclonal) (M02) is for research use only and not for use in diagnostic or therapeutic procedures.

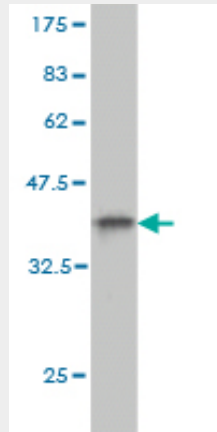
C10orf4 Antibody (monoclonal) (M02) - Protocols

Provided below are standard protocols that you may find useful for product applications.

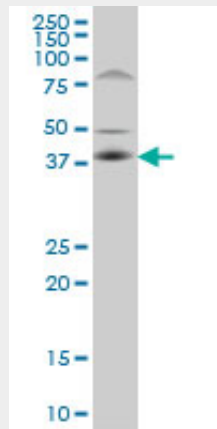
- [Western Blot](#)
- [Blocking Peptides](#)
- [Dot Blot](#)
- [Immunohistochemistry](#)

- [Immunofluorescence](#)
- [Immunoprecipitation](#)
- [Flow Cytometry](#)
- [Cell Culture](#)

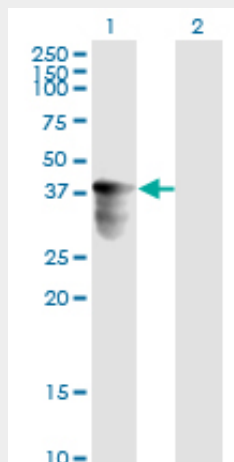
C10orf4 Antibody (monoclonal) (M02) - Images



Antibody Reactive Against Recombinant Protein. Western Blot detection against Immunogen (36.74 KDa) .



C10orf4 monoclonal antibody (M02), clone 2C4 Western Blot analysis of C10orf4 expression in PC-12 ((Cat # AT1325a)



Western Blot analysis of C10orf4 expression in transfected 293T cell line by C10orf4 monoclonal antibody (M02), clone 2C4.

Lane 1: C10orf4 transfected lysate(37.6 KDa).
Lane 2: Non-transfected lysate.

C10orf4 Antibody (monoclonal) (M02) - Background

The protein encoded by this gene is a nuclear phosphoprotein of unknown function. The 5' UTR of this gene is part of a CpG island and contains a tandem CGG repeat region that normally consists of 8-14 repeats but can expand to over 200 repeats. The expanded allele becomes hypermethylated and is not transcribed; however, an expanded repeat region has not been associated with any disease phenotype. This gene is found within the rare FRA10A folate-sensitive fragile site.

C10orf4 Antibody (monoclonal) (M02) - References

A scan of chromosome 10 identifies a novel locus showing strong association with late-onset Alzheimer disease. Grupe A, et al. *Am J Hum Genet*, 2006 Jan. PMID 16385451. A human protein-protein interaction network: a resource for annotating the proteome. Stelzl U, et al. *Cell*, 2005 Sep 23. PMID 16169070. The status, quality, and expansion of the NIH full-length cDNA project: the Mammalian Gene Collection (MGC). Gerhard DS, et al. *Genome Res*, 2004 Oct. PMID 15489334. Folate-sensitive fragile site FRA10A is due to an expansion of a CGG repeat in a novel gene, FRA10AC1, encoding a nuclear protein. Sarafidou T, et al. *Genomics*, 2004 Jul. PMID 15203205. The DNA sequence and comparative analysis of human chromosome 10. Deloukas P, et al. *Nature*, 2004 May 27. PMID 15164054.