

BTBD1 Antibody (monoclonal) (M01)

Mouse monoclonal antibody raised against a partial recombinant BTBD1.

Catalog # AT1315a

Specification

BTBD1 Antibody (monoclonal) (M01) - Product Information

Application	WB, E
Primary Accession	O9H0C5
Other Accession	NM_025238
Reactivity	Human
Host	mouse
Clonality	Monoclonal
Isotype	IgG2a Kappa
Calculated MW	52771

BTBD1 Antibody (monoclonal) (M01) - Additional Information

Gene ID 53339

Other Names

BTB/POZ domain-containing protein 1, Hepatitis C virus NS5A-transactivated protein 8, HCV NS5A-transactivated protein 8, BTBD1, C15orf1, NS5ATP8

Target/Specificity

BTBD1 (NP_079514, 384 a.a. ~ 482 a.a) partial recombinant protein with GST tag. MW of the GST tag alone is 26 KDa.

Dilution

WB~~1:500~1000

Format

Clear, colorless solution in phosphate buffered saline, pH 7.2 .

Storage

Store at -20°C or lower. Aliquot to avoid repeated freezing and thawing.

Precautions

BTBD1 Antibody (monoclonal) (M01) is for research use only and not for use in diagnostic or therapeutic procedures.

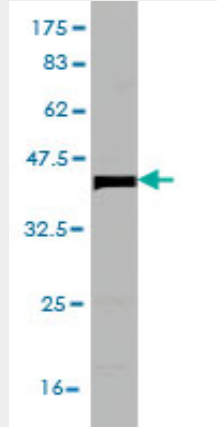
BTBD1 Antibody (monoclonal) (M01) - Protocols

Provided below are standard protocols that you may find useful for product applications.

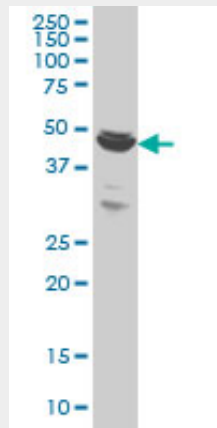
- [Western Blot](#)
- [Blocking Peptides](#)
- [Dot Blot](#)

- [Immunohistochemistry](#)
- [Immunofluorescence](#)
- [Immunoprecipitation](#)
- [Flow Cytometry](#)
- [Cell Culture](#)

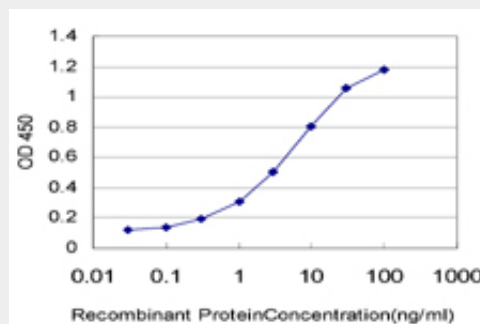
BTBD1 Antibody (monoclonal) (M01) - Images



Antibody Reactive Against Recombinant Protein. Western Blot detection against Immunogen (36.63 KDa) .



BTBD1 monoclonal antibody (M01), clone 3E11 Western Blot analysis of BTBD1 expression in HeLa ((Cat # AT1315a)



Detection limit for recombinant GST tagged BTBD1 is approximately 0.03ng/ml as a capture antibody.

BTBD1 Antibody (monoclonal) (M01) - Background

The C-terminus of the protein encoded by this gene binds topoisomerase I. The N-terminus contains a proline-rich region and a BTB/POZ domain (broad-complex, Tramtrack and bric a brac/Pox virus and Zinc finger), both of which are typically involved in protein-protein interactions. Subcellularly, the protein localizes to cytoplasmic bodies. Alternative splicing results in multiple transcript variants encoding different isoforms.

BTBD1 Antibody (monoclonal) (M01) - References

Defining the human deubiquitinating enzyme interaction landscape. Sowa ME, et al. Cell, 2009 Jul 23. PMID 19615732. Search for cellular partners of human papillomavirus type 16 E2 protein. Olejnik-Schmidt AK, et al. Arch Virol, 2008. PMID 18305892. The LIFEdb database in 2006. Mehrle A, et al. Nucleic Acids Res, 2006 Jan 1. PMID 16381901. From ORFeome to biology: a functional genomics pipeline. Wiemann S, et al. Genome Res, 2004 Oct. PMID 15489336. The status, quality, and expansion of the NIH full-length cDNA project: the Mammalian Gene Collection (MGC). Gerhard DS, et al. Genome Res, 2004 Oct. PMID 15489334.