

BLVRB Antibody (monoclonal) (M09)

Mouse monoclonal antibody raised against a partial recombinant BLVRB.

Catalog # AT1303a

Specification

BLVRB Antibody (monoclonal) (M09) - Product Information

Application	WB, E
Primary Accession	P30043
Other Accession	NM_000713
Reactivity	Human
Host	mouse
Clonality	Monoclonal
Isotype	IgG2a Kappa
Calculated MW	22119

BLVRB Antibody (monoclonal) (M09) - Additional Information

Gene ID 645

Other Names

Flavin reductase (NADPH), FR, Biliverdin reductase B, BVR-B, Biliverdin-IX beta-reductase, Green heme-binding protein, GHBP, NADPH-dependent diaphorase, NADPH-flavin reductase, FLR, BLVRB, FLR

Target/Specificity

BLVRB (NP_000704, 107 a.a. ~ 206 a.a) partial recombinant protein with GST tag. MW of the GST tag alone is 26 KDa.

Dilution

WB~~1:500~1000

Format

Clear, colorless solution in phosphate buffered saline, pH 7.2 .

Storage

Store at -20°C or lower. Aliquot to avoid repeated freezing and thawing.

Precautions

BLVRB Antibody (monoclonal) (M09) is for research use only and not for use in diagnostic or therapeutic procedures.

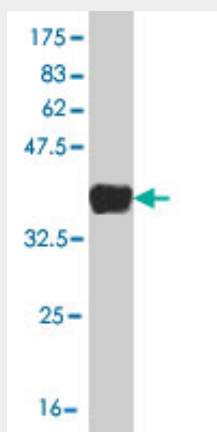
BLVRB Antibody (monoclonal) (M09) - Protocols

Provided below are standard protocols that you may find useful for product applications.

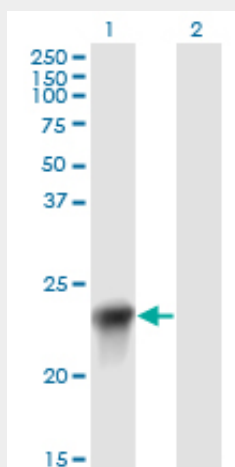
- [Western Blot](#)
- [Blocking Peptides](#)

- [Dot Blot](#)
- [Immunohistochemistry](#)
- [Immunofluorescence](#)
- [Immunoprecipitation](#)
- [Flow Cytometry](#)
- [Cell Culture](#)

BLVRB Antibody (monoclonal) (M09) - Images

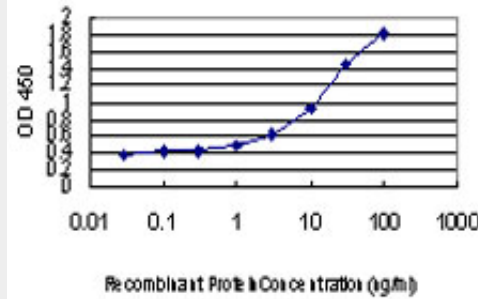


Antibody Reactive Against Recombinant Protein. Western Blot detection against Immunogen (36.74 kDa) .



Western Blot analysis of BLVRB expression in transfected 293T cell line by BLVRB monoclonal antibody (M09), clone 2F4.

Lane 1: BLVRB transfected lysate(22.1 kDa).
Lane 2: Non-transfected lysate.



Detection limit for recombinant GST tagged BLVRB is approximately 0.03ng/ml as a capture antibody.

BLVRB Antibody (monoclonal) (M09) - Background

The final step in heme metabolism in mammals is catalyzed by the cytosolic biliverdin reductase enzymes A and B (EC 1.3.1.24).

BLVRB Antibody (monoclonal) (M09) - References

1.The heme degradation pathway is a promising serum biomarker source for the early detection of Alzheimer's disease.Mueller C, Zhou W, Vanmeter A, Heiby M, Magaki S, Ross MM, Espina V, Schrag M, Dickson C, Liotta LA, Kirsch WM.J Alzheimers Dis. 2010 Jan;19(3):1081-91.