

BGLAP Antibody (monoclonal) (M01)

Mouse monoclonal antibody raised against a partial recombinant BGLAP.

Catalog # AT1294a

Specification

BGLAP Antibody (monoclonal) (M01) - Product Information

Application	IF, WB, E
Primary Accession	P02818
Other Accession	NM_199173
Reactivity	Human
Host	mouse
Clonality	Monoclonal
Isotype	IgG1 lambda
Calculated MW	10963

BGLAP Antibody (monoclonal) (M01) - Additional Information

Gene ID 632

Other Names

Osteocalcin, Bone Gla protein, BGP, Gamma-carboxyglutamic acid-containing protein, BGLAP

Target/Specificity

BGLAP (NP_954642, 52 a.a. ~ 100 a.a) partial recombinant protein with GST tag. MW of the GST tag alone is 26 KDa.

Dilution

WB ~ 1:500 ~ 1000

Format

Clear, colorless solution in phosphate buffered saline, pH 7.2 .

Storage

Store at -20°C or lower. Aliquot to avoid repeated freezing and thawing.

Precautions

BGLAP Antibody (monoclonal) (M01) is for research use only and not for use in diagnostic or therapeutic procedures.

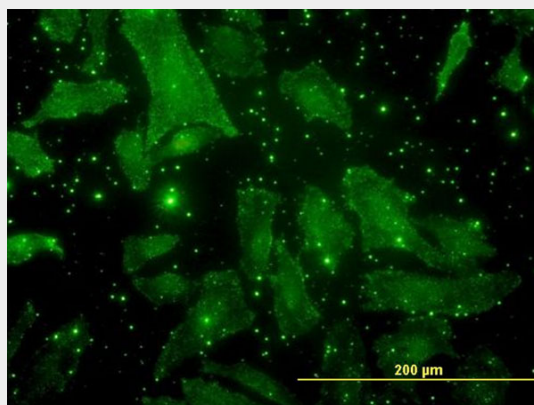
BGLAP Antibody (monoclonal) (M01) - Protocols

Provided below are standard protocols that you may find useful for product applications.

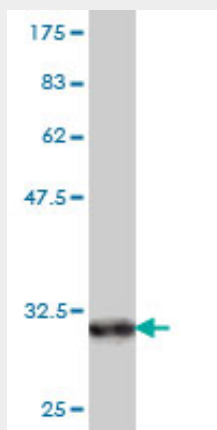
- [Western Blot](#)
- [Blocking Peptides](#)
- [Dot Blot](#)
- [Immunohistochemistry](#)

- [Immunofluorescence](#)
- [Immunoprecipitation](#)
- [Flow Cytometry](#)
- [Cell Culture](#)

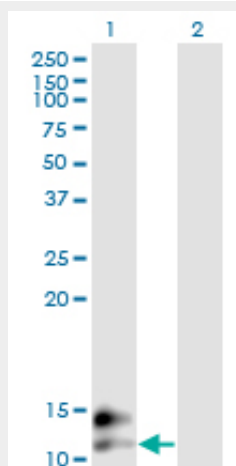
BGLAP Antibody (monoclonal) (M01) - Images



Immunofluorescence of monoclonal antibody to BGLAP on HeLa cell . [antibody concentration 10 ug/ml]



Antibody Reactive Against Recombinant Protein. Western Blot detection against Immunogen (31.13 KDa) .

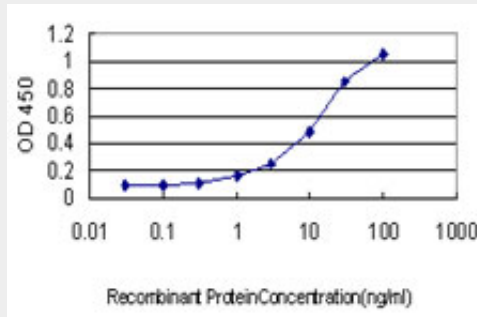


Western Blot analysis of BGLAP expression in transfected 293T cell line by BGLAP monoclonal

antibody (M01), clone 2D4.

Lane 1: BGLAP transfected lysate(11 KDa).

Lane 2: Non-transfected lysate.



Detection limit for recombinant GST tagged BGLAP is approximately 0.3ng/ml as a capture antibody.

BGLAP Antibody (monoclonal) (M01) - References

Analysis of osteocalcin as a candidate gene for type 2 diabetes (T2D) and intermediate traits in Caucasians and African Americans. Das SK, et al. Dis Markers, 2010 Jan 1. PMID 20592451. Reduced serum total osteocalcin is associated with metabolic syndrome in older men via waist circumference, hyperglycemia, and triglyceride levels. Yeap BB, et al. Eur J Endocrinol, 2010 Aug. PMID 20501596. Evidence for osteocalcin production by adipose tissue and its role in human metabolism. Foresta C, et al. J Clin Endocrinol Metab, 2010 Jul. PMID 20410230. Serum osteocalcin is associated with measures of insulin resistance, adipokine levels, and the presence of metabolic syndrome. Saleem U, et al. Arterioscler Thromb Vasc Biol, 2010 Jul. PMID 20395593. Hepatic osteodystrophy and liver cirrhosis. Goral V, et al. World J Gastroenterol, 2010 Apr 7. PMID 20355242.