

**BCL2L1 Antibody (monoclonal) (M01)****Mouse monoclonal antibody raised against a full length recombinant BCL2L1.****Catalog # AT1282a****Specification**

---

**BCL2L1 Antibody (monoclonal) (M01) - Product Information**

Application	IF, WB, E
Primary Accession	<a href="#">Q07817</a>
Other Accession	<a href="#">BC019307</a>
Reactivity	Human
Host	mouse
Clonality	Monoclonal
Isotype	IgG1 Kappa
Calculated MW	26049

**BCL2L1 Antibody (monoclonal) (M01) - Additional Information****Gene ID** 598**Other Names**

Bcl-2-like protein 1, Bcl2-L-1, Apoptosis regulator Bcl-X, BCL2L1, BCL2L, BCLX

**Target/Specificity**

BCL2L1 (AAH19307, 1 a.a. ~ 233 a.a) full-length recombinant protein with GST tag. MW of the GST tag alone is 26 KDa.

**Dilution**

WB~~1:500~1000

**Format**

Clear, colorless solution in phosphate buffered saline, pH 7.2 .

**Storage**

Store at -20°C or lower. Aliquot to avoid repeated freezing and thawing.

**Precautions**

BCL2L1 Antibody (monoclonal) (M01) is for research use only and not for use in diagnostic or therapeutic procedures.

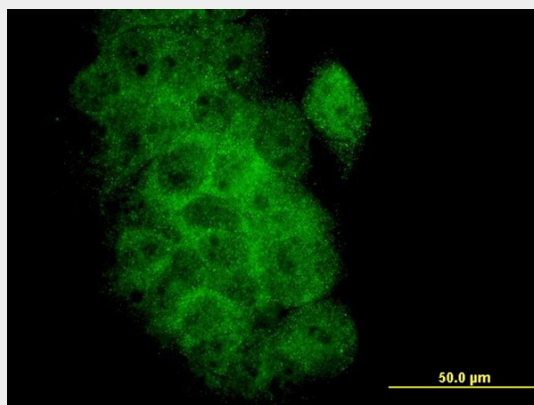
**BCL2L1 Antibody (monoclonal) (M01) - Protocols**

Provided below are standard protocols that you may find useful for product applications.

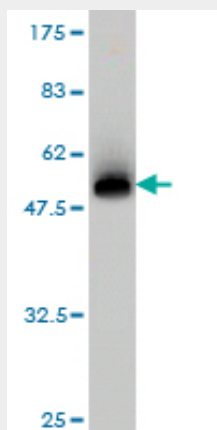
- [Western Blot](#)
- [Blocking Peptides](#)
- [Dot Blot](#)
- [Immunohistochemistry](#)

- [Immunofluorescence](#)
- [Immunoprecipitation](#)
- [Flow Cytometry](#)
- [Cell Culture](#)

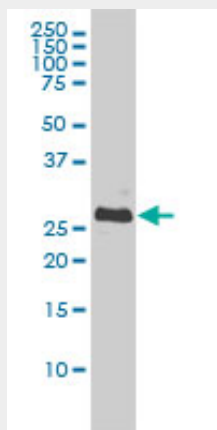
### BCL2L1 Antibody (monoclonal) (M01) - Images



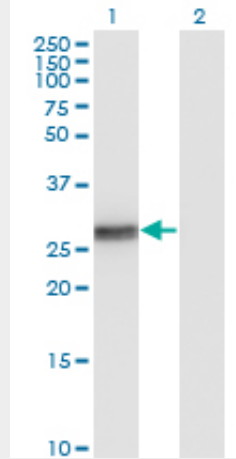
Immunofluorescence of monoclonal antibody to BCL2L1 on A-431 cell. [antibody concentration 10 ug/ml]



Antibody Reactive Against Recombinant Protein. Western Blot detection against Immunogen (51.37 KDa) .

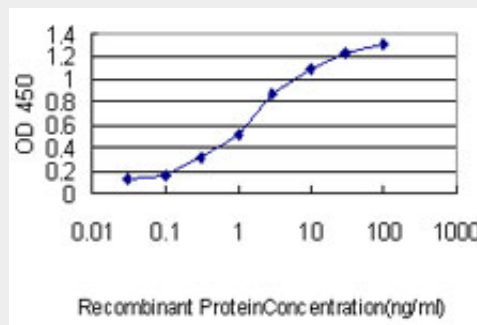


BCL2L1 monoclonal antibody (M01), clone 3E2-2A5 Western Blot analysis of BCL2L1 expression in A-431 ( (Cat # AT1282a )

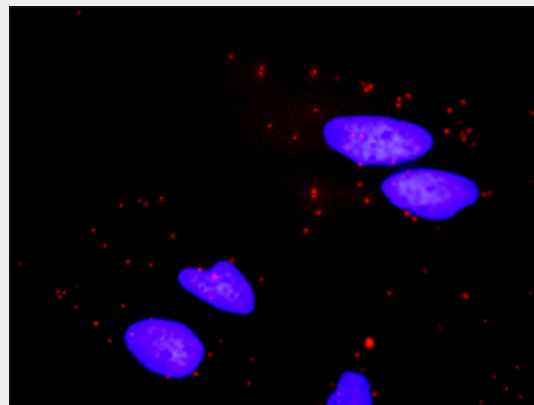


Western Blot analysis of BCL2L1 expression in transfected 293T cell line by BCL2L1 monoclonal antibody (M01), clone 3E2-2A5.

Lane 1: BCL2L1 transfected lysate (Predicted MW: 26 KDa).  
Lane 2: Non-transfected lysate.



Detection limit for recombinant GST tagged BCL2L1 is approximately 0.03ng/ml as a capture antibody.



Proximity Ligation Analysis of protein-protein interactions between BID and BCL2L1. HeLa cells were stained with anti-BID rabbit purified polyclonal 1:1200 and anti-BCL2L1 mouse monoclonal antibody 1:50. Each red dot represents the detection of protein-protein interaction complex, and nuclei were counterstained with DAPI (blue).

### **BCL2L1 Antibody (monoclonal) (M01) - Background**

The protein encoded by this gene belongs to the BCL-2 protein family. BCL-2 family members form hetero- or homodimers and act as anti- or pro-apoptotic regulators that are involved in a wide

variety of cellular activities. The proteins encoded by this gene are located at the outer mitochondrial membrane, and have been shown to regulate outer mitochondrial membrane channel (VDAC) opening. VDAC regulates mitochondrial membrane potential, and thus controls the production of reactive oxygen species and release of cytochrome C by mitochondria, both of which are the potent inducers of cell apoptosis. Two alternatively spliced transcript variants, which encode distinct isoforms, have been reported. The longer isoform acts as an apoptotic inhibitor and the shorter form acts as an apoptotic activator.

#### **BCL2L1 Antibody (monoclonal) (M01) - References**

1.A BACH2?BCL2L1 fusion gene resulting from at (6; 20)(q15; q11. 2) chromosomal translocation in the lymphoma cell line BLUE?1.Turkmen S, Riehn M, Klopocki E, Molкетин M, Reinhardt R, Burmeister T.Genes Chromosomes Cancer. 2011 Jun;50(6):389-96. doi: 10.1002/gcc.20863. Epub 2011 Mar 15.